

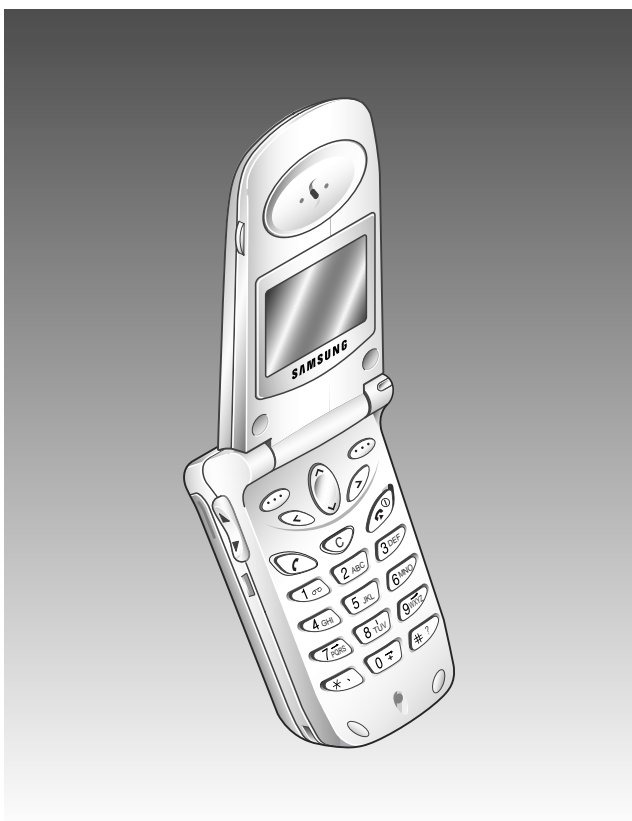




DUAL BAND Mobile Cellular Phone SGH-A288/SGH-A200

SERVICE Manual

DUAL BAND MOBILE CELLULAR PHONE



CONTENTS

1. Exploded Views and Parts List
2. PCB Diagrams
3. Electrical Parts List
4. Block Diagrams
5. Flow Chart of Troubleshooting and Circuit Diagram

1. Exploded Views and Parts List

- 1-1 Main
- 1-2 Main Parts List
- 1-3 Travel Adapter
- 1-4 Travel Adapter Parts List
- 1-5 Ciger Light Adapter
- 1-6 Ciger Light Adapter Parts List
- 1-7 Test Jig
- 1-8 Wearable EAR Microphone
- 1-9 Data Kit
- 1-10 Battery Charger

2. PCB Diagrams

- 2-1 Main Top
 - 2-1-1 Main RF Top
 - 2-1-2 Main Base Band Top
- 2-2 Main Bottom
 - 2-2-1 Main RF Bottom
 - 2-2-2 Main Base Band Bottom

3. Electrical Parts List

- 3-1 Main Parts List Top
- 3-2 Main Parts List Bottom

4. Block Diagrams

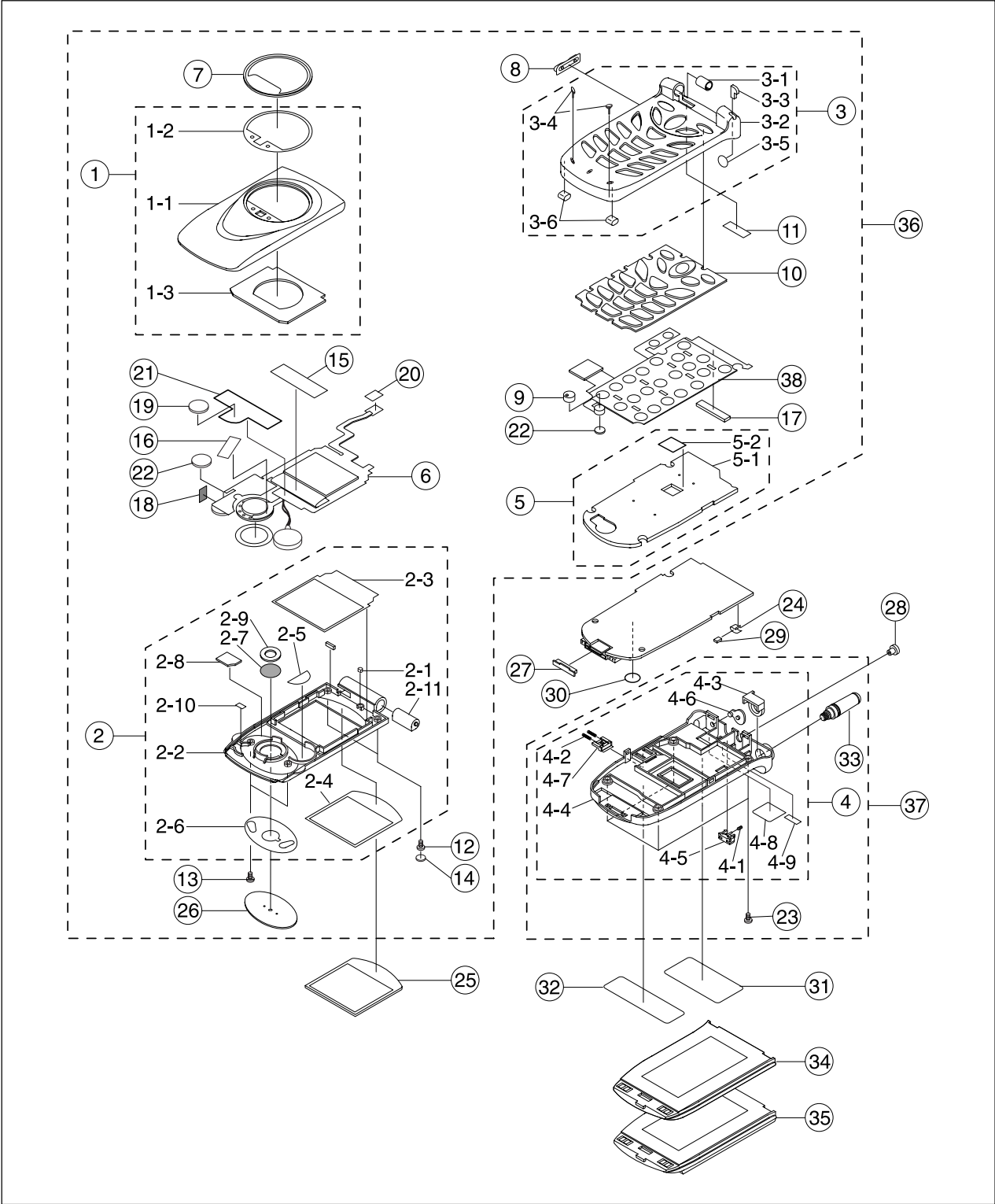
- 4-1 Main Base Band
- 4-2 Main RF
 - 4-2-1 RF Tx Part
 - 4-2-2 RF Rx Part

5. Flow chart of Troubleshooting and Circuit Diagram

- 5-1 Power ON
 - 5-2 Initial
 - 5-3 Charging Part
 - 5-4 Sim Part
 - 5-5 Microphone Part
 - 5-6 Speaker Part
 - 5-7 Key Data Input
 - 5-8 Alert tone
 - 5-9 Ring Indicator
 - 5-10 Back Light
 - 5-11 GSM Receiver
 - 5-12 GSM Transmit
 - 5-13 DCS Receiver
 - 5-14 DCS Transmit
-

1. Exploded Views and Parts List

1-1 Main



1-2 Main Parts List

| NO | SEC CODE | DESCRIPTION | COLOR | SVC | Q`TY | REMARKS |
|----|----------|-------------|--------------------------|------------|------|---------|
| 1 | | GH75-00925A | MEC-FOLDER UPPER | WHITE | SA | 1 |
| | | GH75-00970A | MEC-FOLDER UPPER | WHITE | SA | 1 |
| | 1-1 | GH72-02098A | PMO-FOLDER UPPER | | SNA | 1 |
| | | GH72-02174A | PMO-FOLDER UPPER | | SNA | 1 |
| | 1-2 | GH74-00307A | MPR-TAPE WATCH WINDOW | | SNA | 1 |
| | 1-3 | GH74-01114A | MPR-SPONGE WATCH LCD | | SNA | 1 |
| 2 | | GH75-00926A | MEC-FOLDER LOWER | WHITE | SA | 1 |
| | 2-1 | GH70-00039A | ICT-MAGNETIC | | SNA | 1 |
| | 2-2 | GH72-02099A | PMO-FOLDER LOWER | | SNA | 1 |
| | 2-3 | GH74-00309A | MPR-SPONGE MAIN LCD | | SNA | 1 |
| | 2-4 | GH74-00310A | MPR-TAPE MAIN LCD | | SNA | 1 |
| | 2-5 | GH74-00311A | MPR-TAPE VIBRATOR | | SNA | 1 |
| | 2-6 | GH74-00312A | MPR-TAPE SPEAKER COVER | | SNA | 1 |
| | 2-7 | GH74-00580A | MPR-EMI MESH SPEAKER | | SNA | 1 |
| | 2-8 | GH74-00721A | MPR-SPONGE COIL | | SNA | 1 |
| | 2-9 | GH74-01240A | MPR-SPONGE SPEAKER | | SNA | 1 |
| | 2-10 | GH74-01241A | MPR-TAPE BUZZER | | SNA | 1 |
| | 2-11 | GH75-00928A | MEC-HINGE | | SA | 1 |
| 3 | | GH75-00924A | MEC-FRONT COVER | WHITE | SA | 1 |
| | 3-1 | GH72-00636A | PMO-HINGE DUMMY | | SNA | 1 |
| | 3-2 | GH72-02097A | PMO-FRONT COVER | | SNA | 1 |
| | 3-3 | GH72-02394A | PMO-REFLECTOR LED | | SNA | 1 |
| | 3-4 | GH73-00266B | RMO-DAMPER(L) | | SNA | 2 |
| | 3-5 | GH74-00445A | MPR-SPONGE CMIC | | SNA | 1 |
| | 3-6 | GH74-01296A | MPR-SHIELD FOAM | | SNA | 2 |
| 4 | | GH75-00927A | MEC-REAR COVER | WHITE | SA | 1 |
| | 4-1 | GH61-00008A | SPRING-LOCKER | | SNA | 1 |
| | 4-2 | GH61-00011A | SPRING-SIM LOCKER | | SNA | 2 |
| | 4-3 | GH71-00380A | NPR-BRACKET ANT | | SNA | 1 |
| | 4-4 | GH72-02102A | PMO-REAR COVER | WHITE | SNA | 1 |
| | 4-5 | GH72-02103A | PMO-LOCKER BATT | WHITE | SNA | 1 |
| | 4-6 | GH72-02104A | PMO-EAR JACK COVER | LIGHT/GRAY | SNA | 1 |
| | 4-7 | GH72-02330A | PMO-SIM KNOB | WHITE | SNA | 1 |
| | 4-8 | GH74-01236A | MPR-TAPE EARPHONE | WHITE | SNA | 1 |
| | 4-9 | GH74-01237A | MPR-TAPE MOBILE | WHITE | SNA | 1 |
| 5 | | GH75-01022A | MEC-SHIELD COVER | | SA | 1 |
| | 5-1 | GH72-02101A | PMO-SHIELD COVER | | SNA | 1 |
| | 5-2 | GH74-01238A | MCT-SHIELD GASKET | | SNA | 1 |
| 6 | | GH07-00051A | LCD-SGHA288 | | SA | 1 |
| 7 | | GH72-00640A | PMO-WATCH WINDOW | | SA | 1 |
| | | GH72-00640D | PMO-WATCH WINDOW SAMSUNG | | SA | 1 |
| 8 | | GH72-00940A | PMO-KNOB VOLUME | | SA | 1 |
| 9 | | GH73-00504A | RMO-HOLDER MIC | | SA | 1 |
| 10 | | GH73-00580A | RMO-KEY PAD | | SA | 1 |
| | | GH73-00580A | RMO-KEY PAD | | SA | 1 |
| 11 | | GH74-00587A | MPR-DUMMY SHEET | | SA | 1 |
| 12 | | 6001-000464 | SCREW-MACHINE | | SA | 2 |
| 13 | | 6001-001402 | SCREW-MACHINE | | SA | 2 |

| NO | | SEC CODE | DESCRIPTION | COLOR | SVC | Q`TY | REMARKS |
|----|--|-------------|------------------------|-------|-----|------|----------|
| 14 | | GH74-00611B | MPR-SCREW CAP | WHITE | SA | 2 | |
| 15 | | GH74-00770A | MPR-ESD SHEET | | SA | 1 | |
| 16 | | GH74-00979A | MPR-SHEET SPEAKER | | SA | 1 | |
| 17 | | GH74-01254A | MPR-SPONGE EARJACK | | SA | 1 | |
| 18 | | GH74-01294A | MPR-CLOTH BUZZER | | SA | 1 | |
| 19 | | GH74-01295A | MPR-SPONGE VIB SPEAKER | | SA | 1 | |
| 20 | | GH74-01297A | MPR-SHIELD FOAM CONN | | SA | 1 | |
| 21 | | GH74-01332A | MPR-GASKET LOWER | | SA | 1 | |
| 22 | | GH74-40518A | MCT-BACKUP TAPE | | SA | 2 | |
| 23 | | 6001-000464 | SCREW-MACHINE | | SA | 4 | |
| 24 | | GH71-00095A | NPR-CONTACT ANT | | SA | 1 | |
| 25 | | GH72-00602A | PCT-WINDOW LCD | | SA | 1 | |
| 26 | | GH72-00647B | PMO-SPEAKER COVER | | SA | 1 | |
| 27 | | GH73-00578A | RMO-CONNECTOR COVER | | SA | 4 | |
| 28 | | GH73-00579A | RMO-MOBILE CAP | | SA | 1 | |
| 29 | | GH73-00667A | RMO-ANT.CONTACT RUBBER | | SA | 1 | |
| 30 | | GH74-40518A | MCT-BACKUP TAPE | | SA | 1 | |
| 31 | | GH68-01684A | LABEL(R)-MAIN(CHNA) | | SNA | 1 | |
| | | GH68-01952A | LABEL(R)-MAIN(XSP) | | SNA | 1 | SGH-A200 |
| 32 | | GH68-01685A | LABEL(R)-MAIN(A288) | | SNA | 1 | |
| 33 | | GH42-00076B | ANTENNA-SGHA288 | | SA | 1 | |
| 34 | | GH43-00283A | BATTERY-SLIM-SGHA288 | | SA | 1 | |
| | | GH43-00326A | BATTERY-SLIM-SGHA200 | | SA | 1 | SGH-A200 |
| 35 | | GH43-00305A | BATTERY-STD-SGHA288 | | SA | 1 | |
| | | GH43-00327A | BATTERY-STD-SGHA200 | | SA | 1 | SGH-A200 |
| 36 | | GH97-01829A | MEA FRONT-TOTAL(WHT) | | SNA | 1 | |
| | | GH97-01924A | MEA FRONT-COVER(WHT) | | SNA | 1 | SGH-A200 |
| 37 | | GH97-01830A | MEA REAR-TOTAL(WHT) | | SNA | 1 | |
| 38 | | GH59-00181A | UNIT-SGH-A288 KEY PAD | | SA | 1 | |

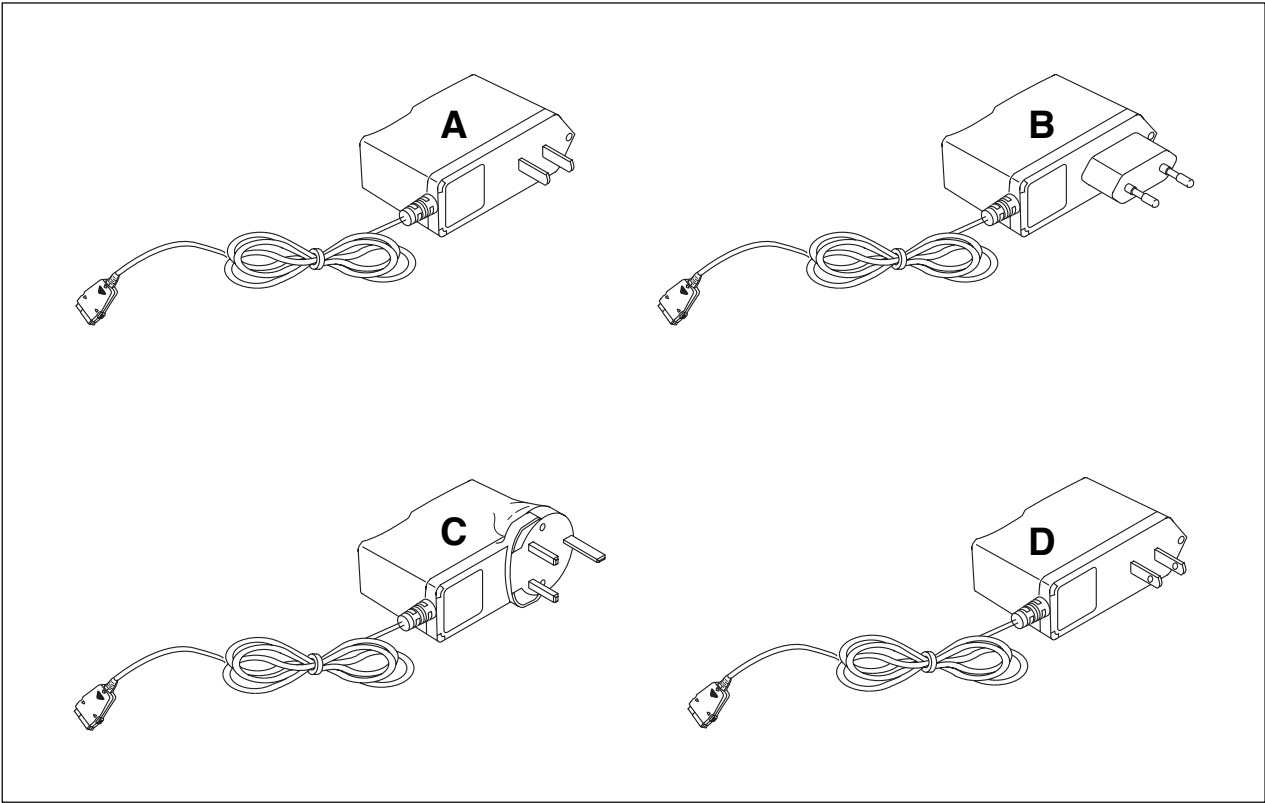
SGH-A288 COLOR & CODE

| <div>COLOR</div> <div>ITEM</div> | WHITE PEARL | GOLD | SILVER |
|----------------------------------|-------------|-------------|-------------|
| MEC-FOLDER UPPER | GH75-00925A | GH75-00925B | GH75-00925C |
| MEC-FOLDER LOWER | GH75-00926A | GH75-00926B | GH75-00926C |
| MEC-FRONT COVER | GH75-00924A | GH75-00924B | GH75-00924C |
| MEC-REAR COVER | GH75-00927A | GH75-00927B | GH75-00927C |
| MPR-SCREW CAP | GH74-00611B | GH74-00313H | GH74-00313F |
| PMO-SPEAKER COVER | GH72-00647B | GH72-00647J | GH72-00647K |
| ANTENNA-SGHA288 | GH42-00076B | GH42-00076B | GH42-00076B |
| BATTERY-SLIM-SGHA288 | GH43-00283A | GH43-00283C | GH43-00283B |
| BATTERY-STD-SGHA288 | GH43-00305A | GH43-00305C | GH43-00305B |

SGH-A200 COLOR & CODE

| <div>COLOR</div> <div>ITEM</div> | WHITE PEARL | GOLD | SILVER |
|----------------------------------|-------------|-------------|-------------|
| MEC-FOLDER UPPER | GH75-00970A | GH75-00970B | GH75-00970C |
| MEC-FOLDER LOWER | GH75-00926A | GH75-00926B | GH75-00926C |
| MEC-FRONT COVER | GH75-00924A | GH75-00924B | GH75-00924C |
| MEC-REAR COVER | GH75-00927A | GH75-00927B | GH75-00927C |
| MPR-SCREW CAP | GH74-00611B | GH74-00313H | GH74-00313F |
| PMO-SPEAKER COVER | GH72-00647B | GH72-00647J | GH72-00647K |
| ANTENNA-SGHA288 | GH42-00076B | GH42-00076B | GH42-00076B |
| BATTERY-SLIM-SGHA200 | GH43-00326A | GH43-00326C | GH43-00326B |
| BATTERY-STD-SGHA200 | GH43-00327A | GH43-00327C | GH43-00327B |

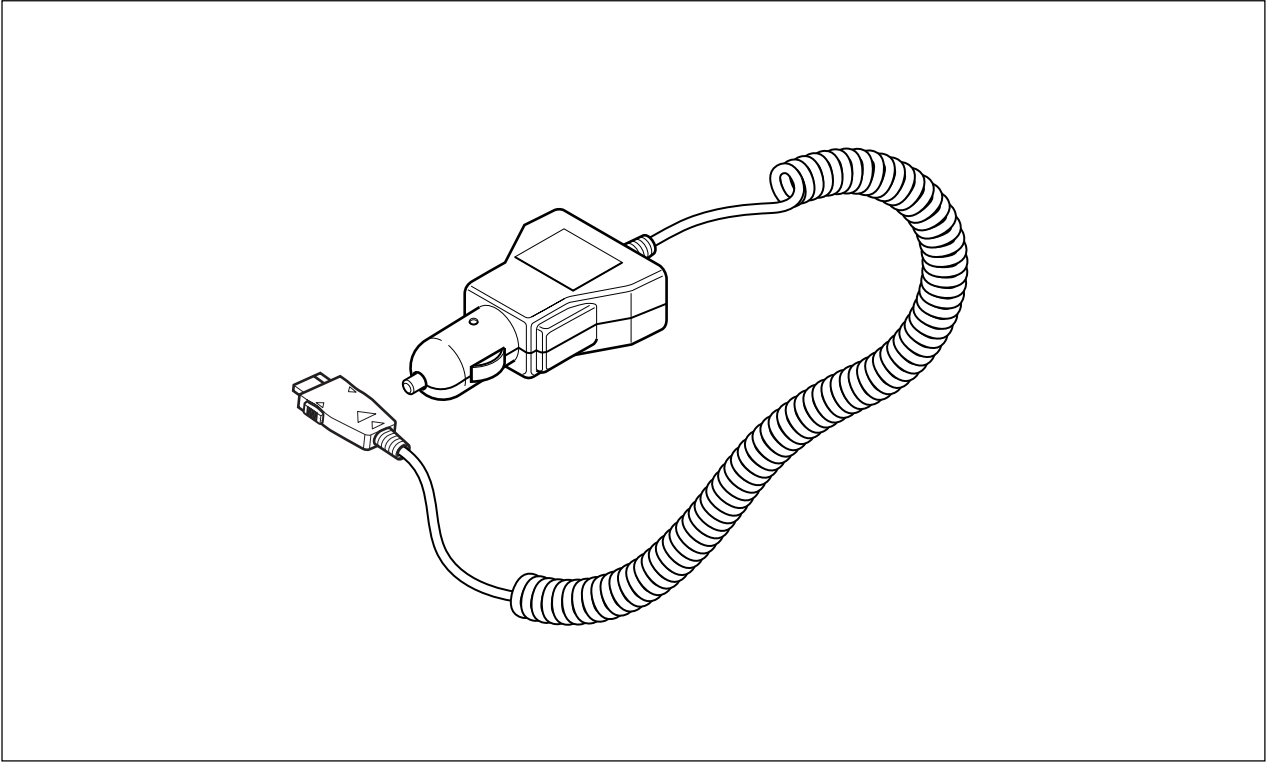
1-3 Travel Adapter



1-4 Travel Adapter Parts List

| TYPE | SEC CODE | REMARK |
|------|-------------|----------------|
| A | GH44-00171A | CHINA |
| B | GH44-00184A | EUROPE |
| C | GH44-00171C | UNITED KINGDOM |
| D | Gh44-00171E | TAIWAN |

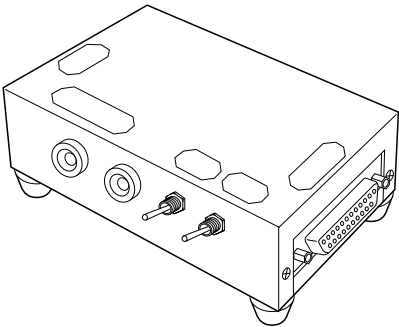
1-5 Ciger Light Adapter



1-6 Ciger Light Adapter Parts List

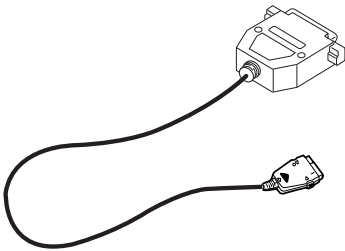
| DESCRIPTION | SEC CODE | REMARK |
|--------------------------|-------------|--------|
| Ciger Light Adapter Code | GH44-00170A | BLACK |

1-7 Test Jig



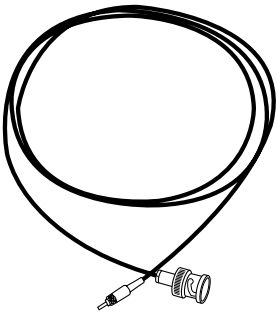
TEST JIG

GH80-10508A



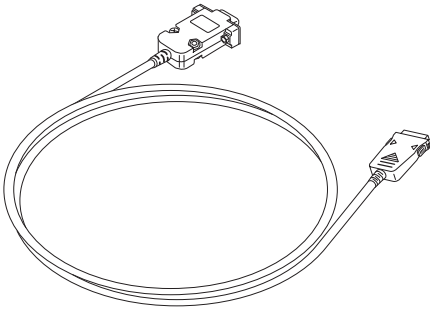
TEST JIG CABLE

GH39-00079A

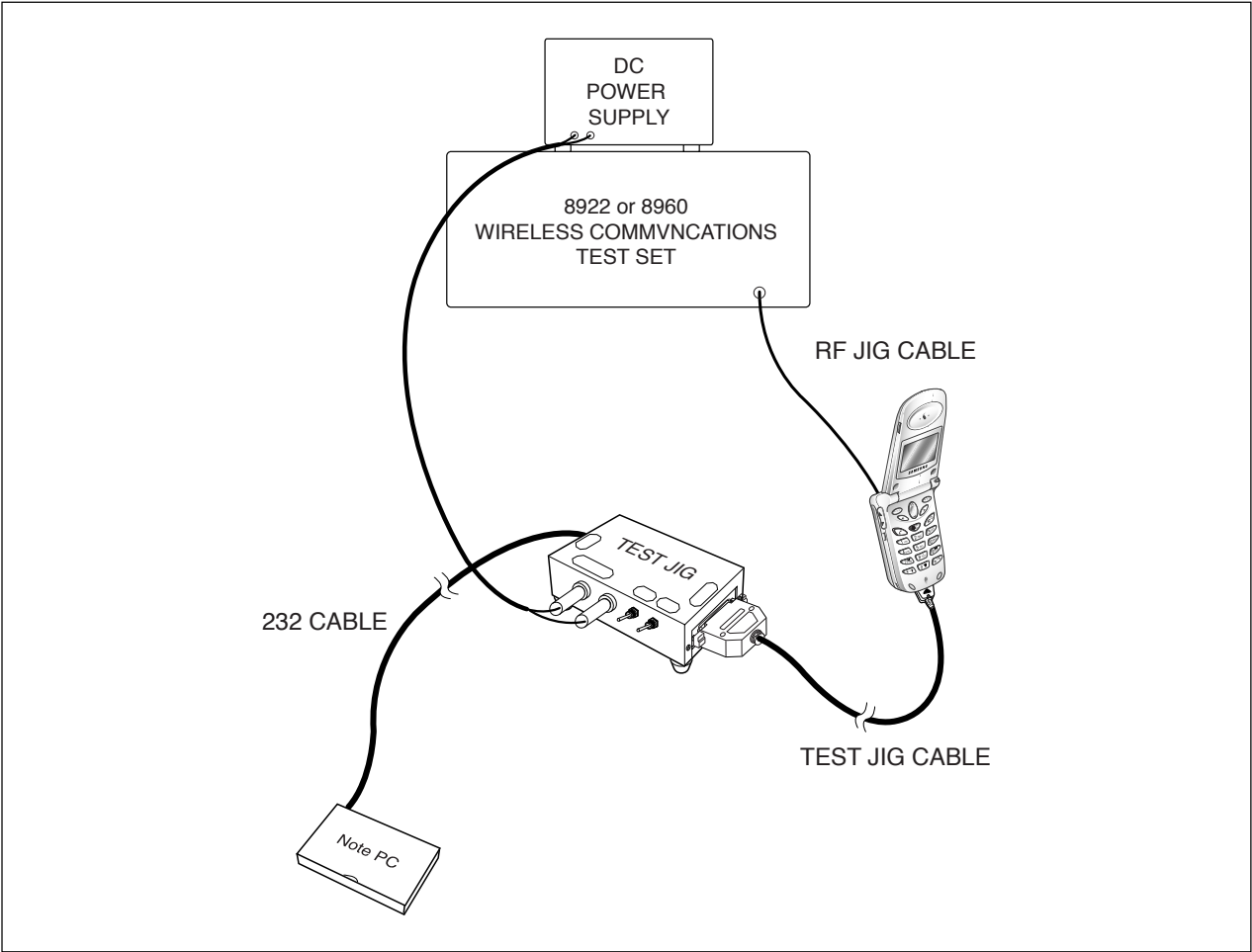


RF JIG CABLE

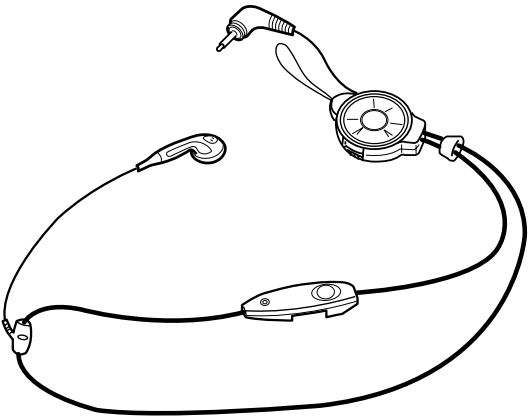
GH39-00093A

| | |
|--|-------------|
|  | |
| DM CABLE | GH39-00080A |

1-7-1 Test Jig

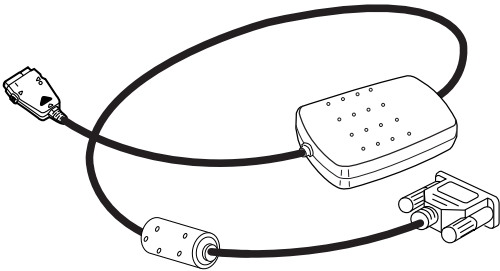


1-8 Wearable EAR Microphone



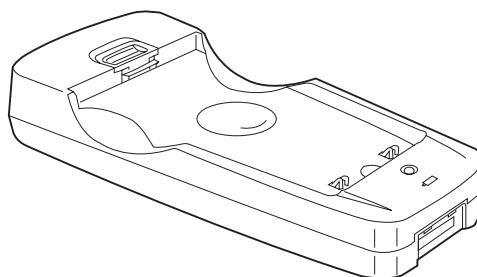
| DESCRIPTION | SEC CODE | REMARK |
|-------------------------|-------------|----------|
| Wearable EAR Microphone | GH59-00168A | SGH-A288 |
| | GH59-00168B | SGH-A200 |

1-9 Data Kit



| | |
|----------|-------------|
| DATA KIT | GH39-00078A |
|----------|-------------|

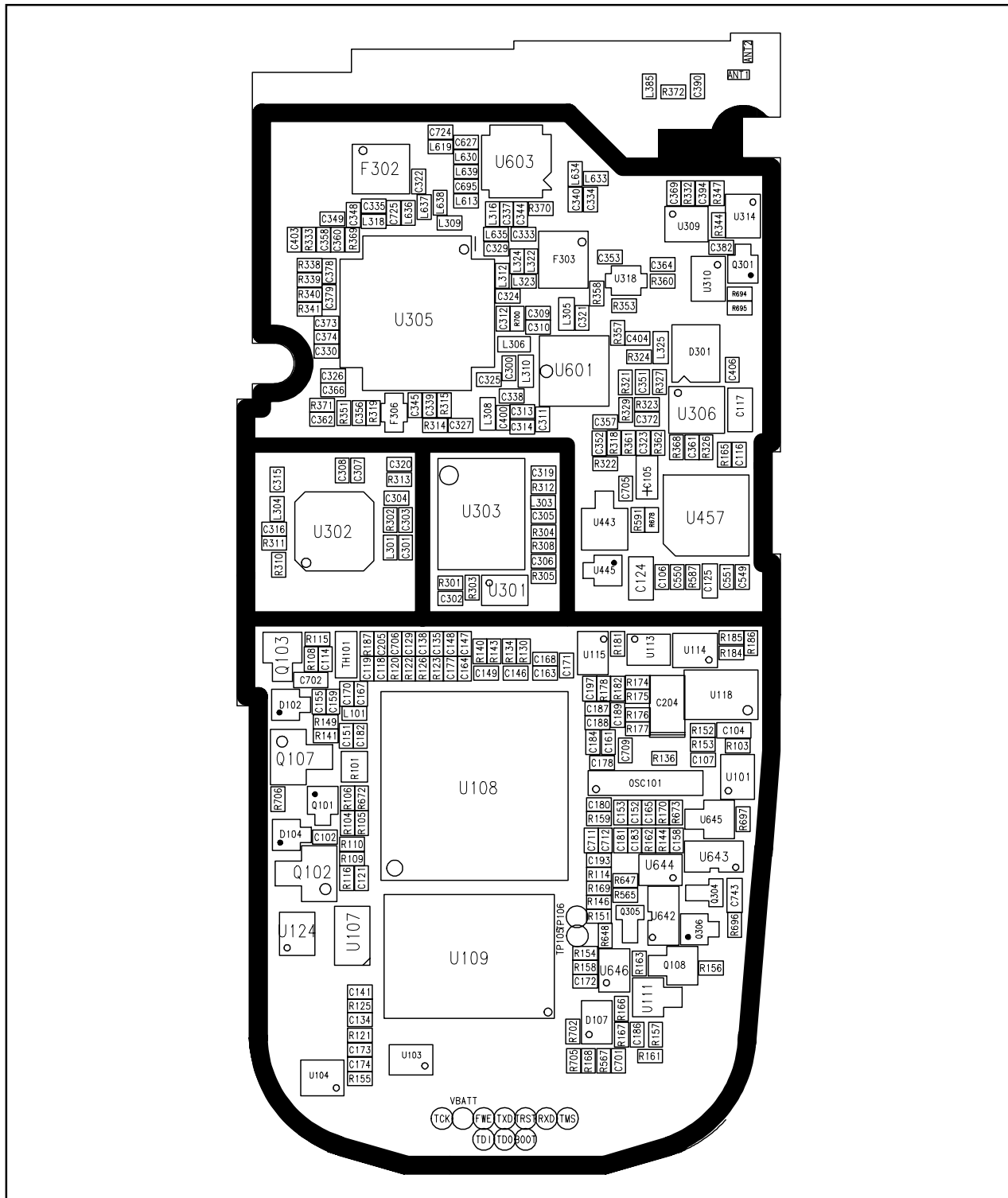
1-10 Battery Charger



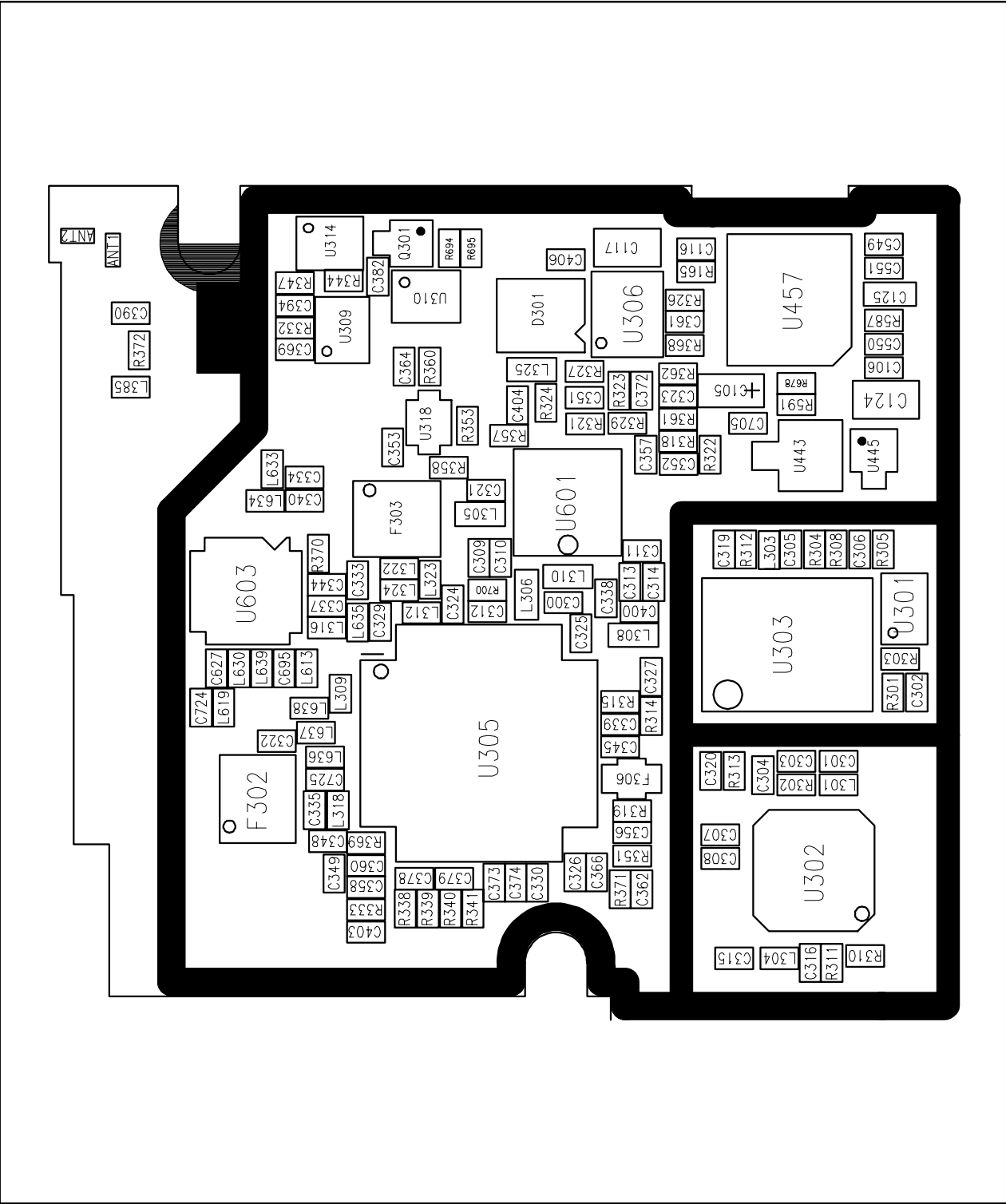
| DESCRIPTION | SEC CODE | REMARK |
|----------------|-------------|----------|
| BATTERY CHAGER | GH44-00177A | SGH-A288 |
| | GH44-00177C | SGH-A200 |

2. PCB Diagrams

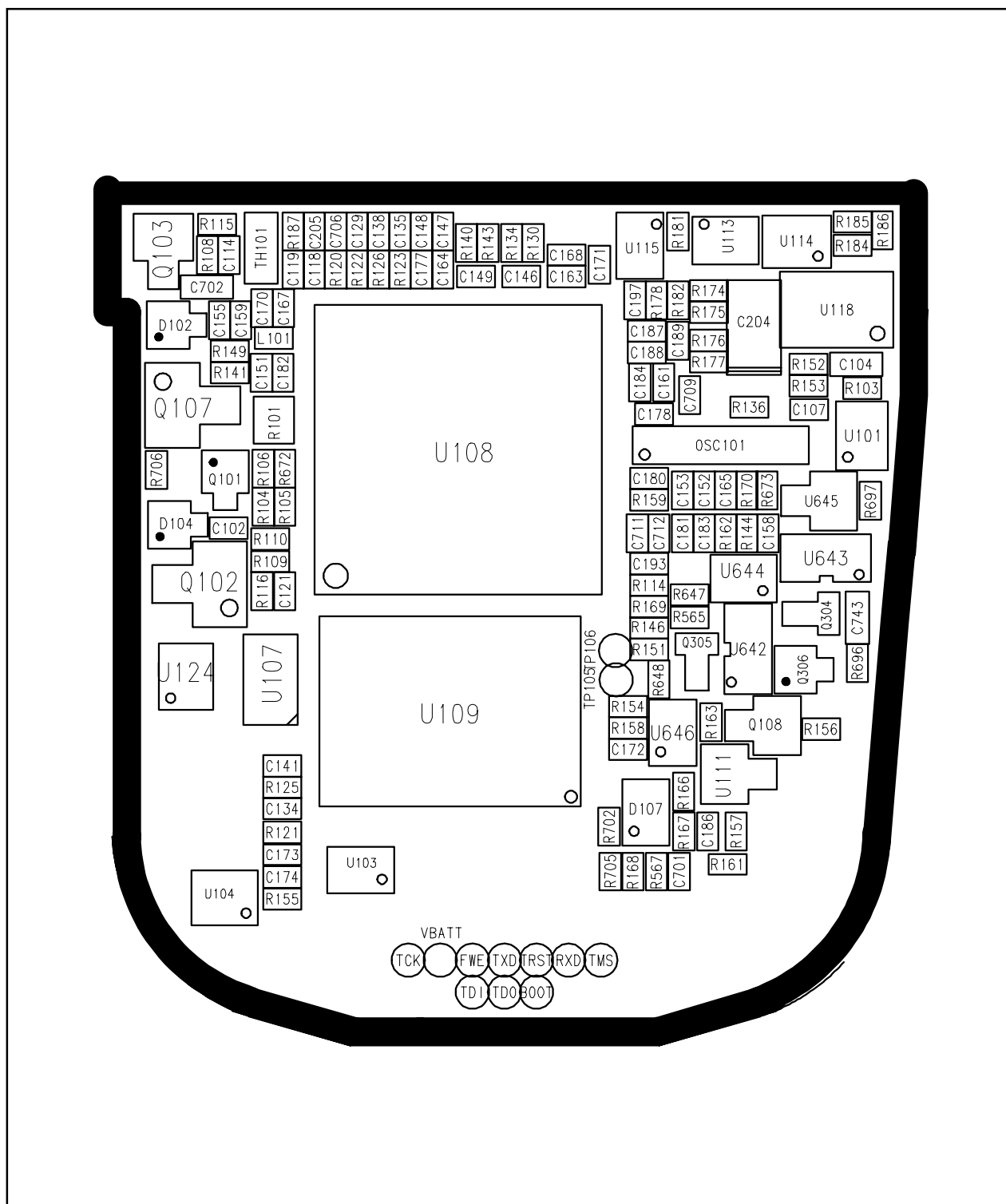
2-1 Main Top



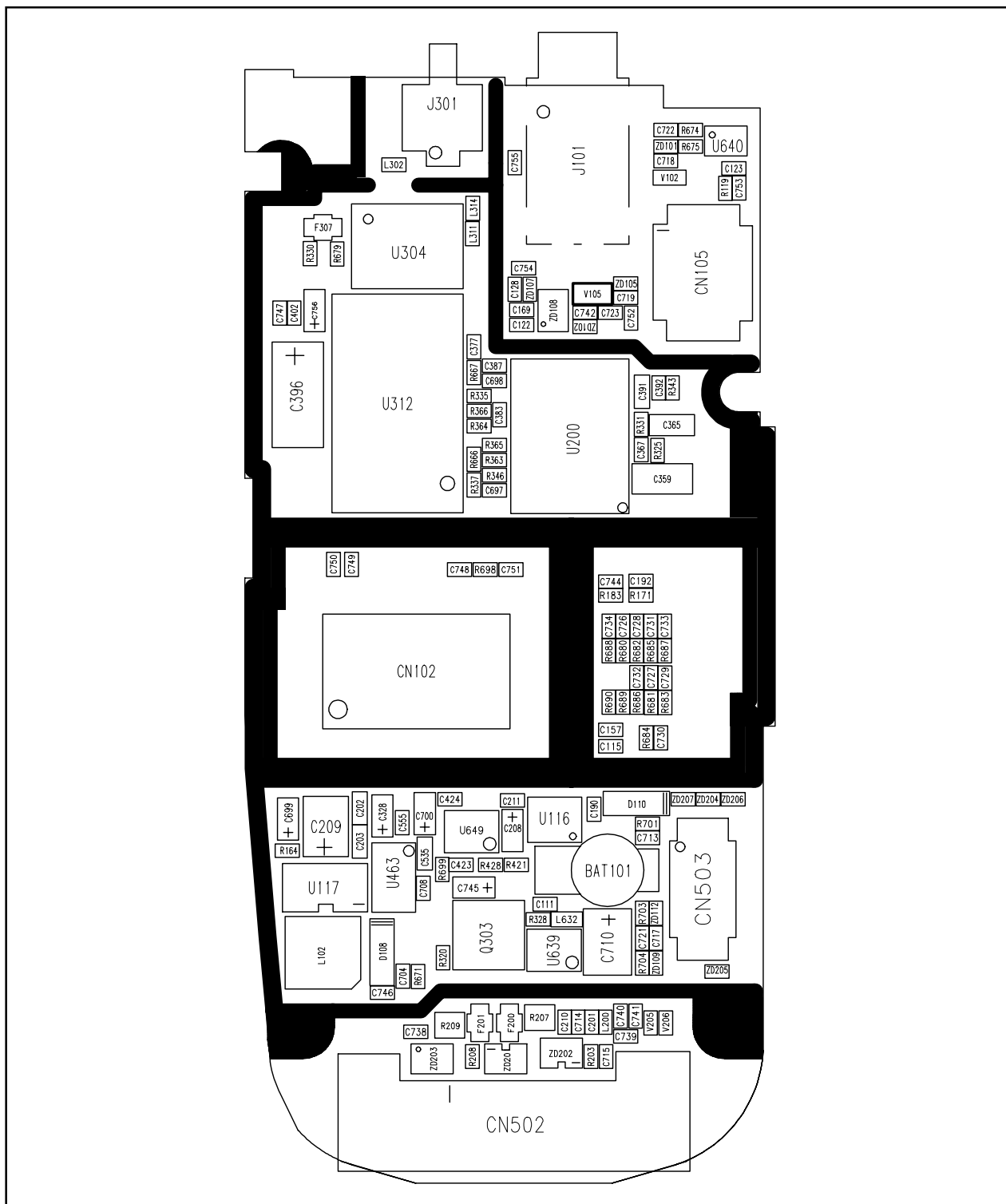
2-1-1 Main RF Top



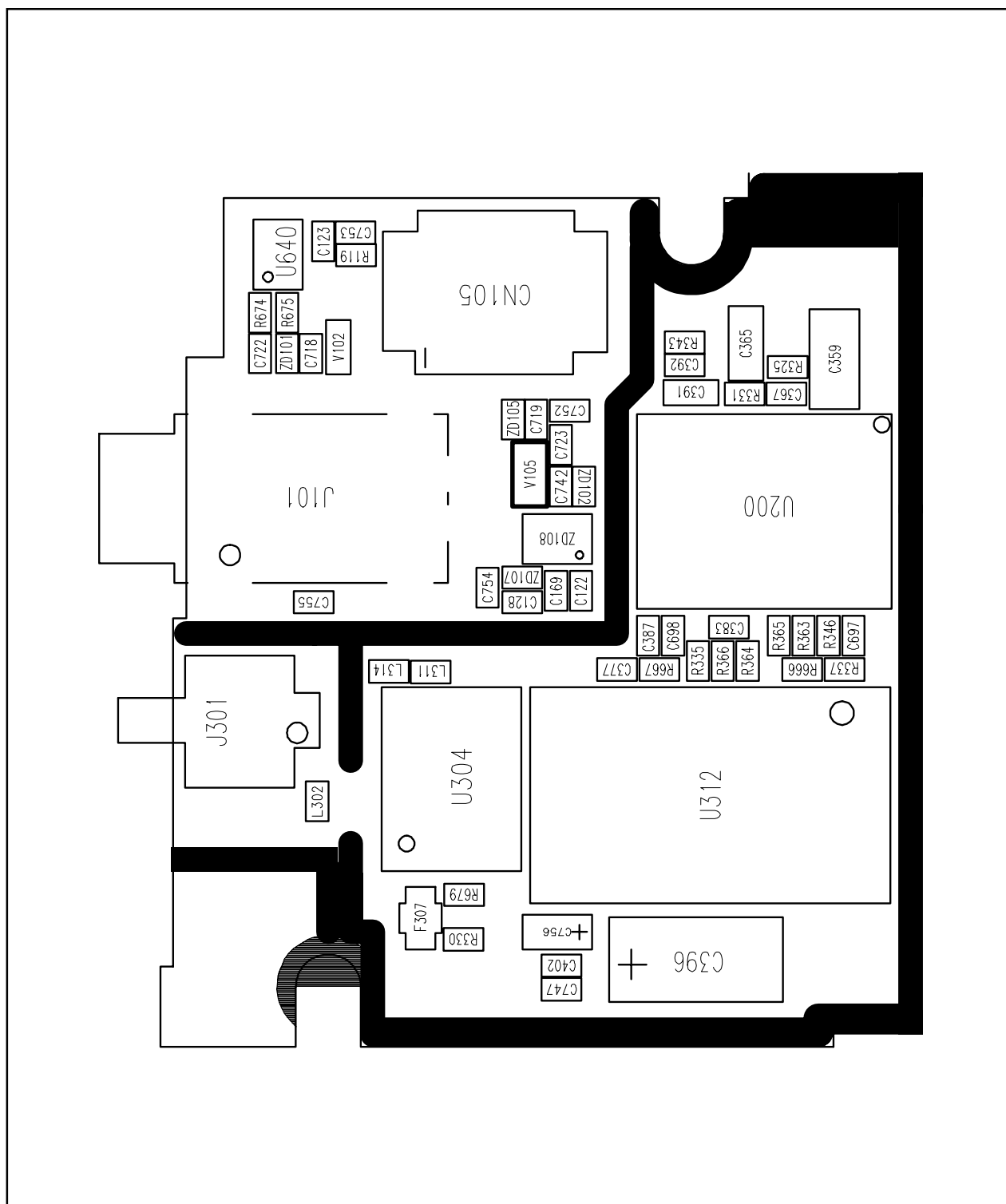
2-1-2 Main Base Band Top



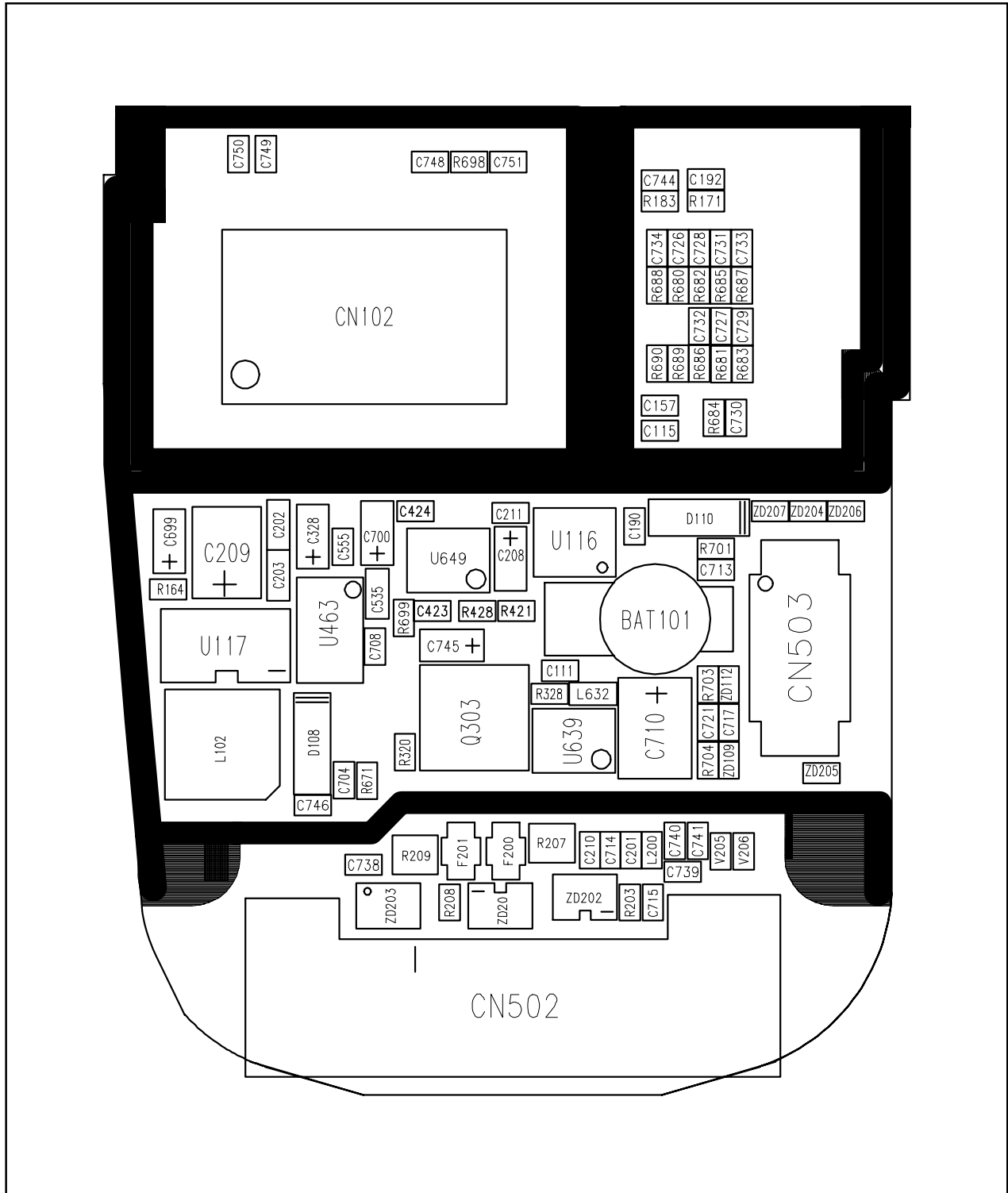
2-2 Main Bottom



2-2-1 Main RF Bottom



2-2-2 Main Base Band Bottom



3. Electrical Parts List

3-1 Main Parts List Top

| | SEC CODE | Reference | Part Description | Vendor Part No. |
|----|---------------------|-------------|-------------------------------|------------------|
| 1 | D301 | 0404-001054 | TR-SMALL SIGNAL;HSMS-2805-L31 | HSMS-2805-L31 |
| 2 | D102,D104 | 0407-001002 | TR-SMALL SIGNAL;DAN222TL | DAN222TL |
| 3 | D107 | 0407-001007 | TR-SMALL SIGNAL;UMN1 | UMN1 |
| 4 | Q108 | 0501-000162 | TR-SMALL SIGNAL;2SA1576FRT106 | 2SA1576FRT106 |
| 5 | Q103 | 0501-000218 | TR-SMALL SIGNAL;2SC4081BRT106 | 2SC4081BRT106 |
| 6 | Q102,Q107 | 0501-002011 | TR-SMALL SIGNAL;2SD2114KT146V | 2SD2114KT146V |
| 7 | U111 | 0501-002202 | TR-SMALL SIGNAL;MMBT2222AWT1 | MMBT2222AWT1 |
| 8 | U445 | 0504-000167 | TR-SMALL SIGNAL;DTC114EE/TR | DTC114EE/TR |
| 9 | Q304,Q305 | 0504-000168 | TR-SMALL SIGNAL;DTC144EE/TR | DTC144EE/TR |
| 10 | Q101,Q301 | 0504-001012 | TR-SMALL SIGNAL;DTC114YE | DTC114YE |
| 11 | Q306 | 0504-001016 | TR-SMALL SIGNAL;DTA114EE-TL | DTA114EE-TL |
| 12 | U443 | 0504-001021 | TR-SMALL SIGNAL;DTB113ZK | DTB113ZK |
| 13 | U104,U124 | 0504-001042 | TR-SMALL SIGNAL;BCR10PN | BCR10PN |
| 14 | U309,U314 | 0504-001058 | TR-SMALL SIGNAL;BCR08PN | BCR08PN |
| 15 | U114 | 0505-001332 | TR-SMALL SIGNAL;FDG6301N | FDG6301N |
| 16 | U101,U310 | 0505-001423 | TR-SMALL SIGNAL;FDG6323L | FDG6323L |
| 17 | U301 | 0506-000151 | LED;UMZ1N-TR | UMZ1N-TR |
| 18 | U644 | 0801-000794 | IC;TC7S08FUTE85L | TC7S08FUTE85L |
| 19 | U646 | 0801-002345 | IC;TC7S04FU(TE85L) | TC7S04FU(TE85L) |
| 20 | U642,U643 | 0801-002510 | IC;TC7W74FK(TE85L) | TC7W74FK(TE85L) |
| 21 | U103 | 0801-002540 | IC;NC7SZ19P6X | NC7SZ19P6X |
| 22 | U113,U115 | 1001-001145 | IC;MAX4599EXT-T | NC7SZ19P6X |
| 23 | U109 | 1106-001301 | IC;LRS1337 | LRS1337 |
| 24 | U306 | 1201-001018 | IC;LM7131ACM5 | LM7131ACM5 |
| 25 | U118 | 1202-001022 | IC;TC75W56FU-TE12L | TC75W56FU-TE12L |
| 26 | U457 | 1203-002142 | IC;MM1448CYFE | MM1448CYFE |
| 27 | U645 | 1203-002187 | IC;MAX6326 | MAX6326 |
| 28 | U108 | 1205-001881 | IC;VP40575 | VP40575 |
| 29 | U305 | 1205-001935 | IC;HD155128TF | HD155128TF |
| 30 | U302 | 1209-001337 | IC;SI4133-MLP28 | SI4133-MLP28 |
| 31 | TH101 | 1404-001005 | IC;NTH5G40B473J01TE | NTH5G40B473J01TE |
| 32 | R331 | 2007-000138 | R-CHIP;100,5% | RK73K1ETP101J |
| 33 | R174,R177 | 2007-000139 | R-CHIP;220,5% | ERJ2GEJ221X |
| 34 | R141,R303,R305,R308 | 2007-000140 | R-CHIP;1K,5% | RK73K1ETP102J |
| 35 | R313,R315,R319 | 2007-000140 | R-CHIP;1K,5% | RK73K1ETP102J |
| 36 | R681,R683 | 2007-000140 | R-CHIP;1K,5% | RK73K1ETP102J |
| 37 | R686 | 2007-000140 | R-CHIP;1K,5% | RK73K1ETP102J |
| 38 | R696 | 2007-000140 | R-CHIP;1K,5% | RK73K1ETP102J |
| 39 | R700 | 2007-000143 | R-CHIP;4.7K,5% | RK73K1ETP472J |

| | SEC CODE | Reference | Part Description | Vendor Part No. |
|----|---------------------|-------------|-------------------|-----------------|
| 40 | R103,R105,R106,R114 | 2007-000148 | R-CHIP;10K,5% | RK73K1ETP103J |
| 41 | R121,R125,R154,R155 | 2007-000148 | R-CHIP;10K,5% | RK73K1ETP103J |
| 42 | R156,R159,R161,R162 | 2007-000148 | R-CHIP;10K,5% | RK73K1ETP103J |
| 43 | R163,R165,R178,R182 | 2007-000148 | R-CHIP;10K,5% | RK73K1ETP103J |
| 44 | R332,R344,R347,R673 | 2007-000148 | R-CHIP;10K,5% | RK73K1ETP103J |
| 45 | R678,R694 | 2007-000148 | R-CHIP;10K,5% | RK73K1ETP103J |
| 46 | R136 | 2007-000152 | R-CHIP;20K,5% | RK73K1ETP203J |
| 47 | R144,R170 | 2007-000157 | R-CHIP;47K,5% | RK73K1ETP473J |
| 48 | R187 | 2007-000159 | R-CHIP;56K,5% | ERJ2GEJ563X |
| 49 | R108,R109,R116,R146 | 2007-000162 | R-CHIP;100K,5% | RK73K1ETP104J |
| 50 | R149,R151,R157,R166 | 2007-000162 | R-CHIP;100K,5% | RK73K1ETP104J |
| 51 | R167,R168,R169 | 2007-000162 | R-CHIP;100K,5% | RK73K1ETP104J |
| 52 | R181,R565,R567,R695 | 2007-000162 | R-CHIP;100K,5% | RK73K1ETP104J |
| 53 | R702,R706,R647,R648 | 2007-000162 | R-CHIP;100K,5% | RK73K1ETP104J |
| 54 | R184,R185,R186 | 2007-000170 | R-CHIP;1M,5% | ERJ2GEJ105X |
| 55 | R312 | 2007-000172 | R-CHIP;10,5% | ERJ2GEJ100X |
| 56 | R369,R370 | 2007-000173 | R-CHIP;22,5% | ERJ2GEJ220X |
| 57 | R371 | 2007-000174 | R-CHIP;47,5% | ERJ2GEJ470X |
| 58 | R310,R301 | 2007-000242 | R-CHIP;1.5K,5% | ERJ2GEJ152X |
| 59 | R115 | 2007-000982 | R-CHIP;5.6K,5% | ERJ2GEJ562X |
| 60 | R329 | 2007-001119 | R-CHIP;680,5% | ERJ2GEJ681X |
| 61 | R314,R360 | 2007-001298 | R-CHIP;51,5% | ERJ2GEJ510X |
| 62 | R110,R175,R176,R323 | 2007-002796 | R-CHIP;510,5% | ERJ2GEJ511X |
| 63 | R324 | 2007-002797 | R-CHIP;560,5% | ERJ2GEJ561X |
| 64 | R304 | 2007-007021 | R-CHIP;75K,5% | ERJ2GEJ753X |
| 65 | R333 | 2007-007135 | R-CHIP;18K,1% | ERJ2RKF1802X |
| 66 | R322 | 2007-007137 | R-CHIP;1.2K,1% | ERJ2GEF122X |
| 67 | R368 | 2007-007309 | R-CHIP;12K,1% | RK73H1ETP1202F |
| 68 | R321 | 2007-007310 | R-CHIP;8.2K,1% | RK73H1ETP8201F |
| 69 | R326 | 2007-007311 | R-CHIP;22K,1% | RK73H1ETP2202F |
| 70 | R338,R339,R340,R341 | 2007-007313 | R-CHIP;6.8K,1% | RK73H1ETP6801F |
| 71 | R361 | 2007-007315 | R-CHIP;3.9K,1% | RK73H1ETP3901F |
| 72 | R120,R122,R123,R126 | 2007-007317 | R-CHIP;2.2K,1% | RK73H1ETP3901F |
| 73 | R130,R134,R140,R143 | 2007-007318 | R-CHIP;1K,1% | RK73H1ETP1001F |
| 74 | R327 | 2007-007318 | R-CHIP;1K,1% | RK73H1ETP1001F |
| 75 | R153 | 2007-007480 | R-CHIP;130K,1% | RK73H1ETP1303F |
| 76 | R318 | 2007-007588 | R-CHIP;1.8K,1% | RK73H1ETP1801F |
| 77 | R362 | 2007-008117 | R-CHIP;2.7Kohm,1% | RK73H1ETP2701F |
| 78 | R158,R302 | 2007-007771 | R-CHIP;0,5% | ERJ2GEJ0R0E |
| 79 | R311,R351,R357 | 2007-007771 | R-CHIP;0,5% | ERJ2GEJ0R0E |
| 80 | R358,R372,R587 | 2007-007771 | R-CHIP;0,5% | ERJ2GEJ0R0E |
| 81 | R705 | 2007-007771 | R-CHIP;0,5% | ERJ2GEJ0R0E |
| 82 | R152 | 2007-007981 | R-CHIP;180K,1% | ERJ2GEJ0R0E |

| | SEC CODE | Reference | Part Description | Vendor Part No. |
|-----|---------------------|-------------|----------------------------------|------------------|
| 83 | R101 | 2011-001345 | R-CHIP;EXB28V103JX | EXB28V103JX |
| 84 | C129,C135,C138 | 2203-000233 | C-CERAMIC,CHIP;C101J,100PF,50V | GRM36C0G101J50PT |
| 85 | C333,C351,C695 | 2203-000233 | C-CERAMIC,CHIP;C101J,100PF,50V | GRM36C0G101J50PT |
| 86 | C706,C725 | 2203-000233 | C-CERAMIC,CHIP;C101J,100PF,50V | GRM36C0G101J50PT |
| 87 | C107,C119,C147 | 2203-000254 | C-CERAMIC,CHIP;C103K,10NF,16V | GRM36X7R103K16PT |
| 88 | C151,C164,C171,C181 | 2203-000254 | C-CERAMIC,CHIP;C103K,10NF,16V | GRM36X7R103K16PT |
| 89 | C183,C197,C306 | 2203-000254 | C-CERAMIC,CHIP;C103K,10NF,16V | GRM36X7R103K16PT |
| 90 | C319,C320,C321,C366 | 2203-000254 | C-CERAMIC,CHIP;C103K,10NF,16V | GRM36X7R103K16PT |
| 91 | C374,C382,C549 | 2203-000254 | C-CERAMIC,CHIP;C103K,10NF,16V | GRM36X7R103K16PT |
| 92 | C550,C551 | 2203-000254 | C-CERAMIC,CHIP;C103K,10NF,16V | GRM36X7R103K16PT |
| 93 | C724 | 2203-000278 | C-CERAMIC,CHIP;C100D,10PF,50V | GRM36C0G100D50PT |
| 94 | C313,C314 | 2203-000330 | C-CERAMIC,CHIP;C120J,12PF,50V | GRM36C0G120J50PT |
| 95 | C300 | 2203-000359 | C-CERAMIC,CHIP;C151J,150PF,50V | GRM36C0G151J50PT |
| 96 | C348 | 2203-000425 | C-CERAMIC,CHIP;C180J,18PF,50V | GRM36C0G180J50PT |
| 97 | C302,C307,C324,C325 | 2203-000438 | C-CERAMIC,CHIP;C102K,1NF,50V | GRM36X7R102K50PT |
| 98 | C326,C327,C330,C338 | 2203-000438 | C-CERAMIC,CHIP;C102K,1NF,50V | GRM36X7R102K50PT |
| 99 | C344,C349,C358,C360 | 2203-000438 | C-CERAMIC,CHIP;C102K,1NF,50V | GRM36X7R102K50PT |
| 100 | C362,C373,C357 | 2203-000438 | C-CERAMIC,CHIP;C102K,1NF,50V | GRM36X7R102K50PT |
| 101 | C406 | 2203-000585 | C-CERAMIC,CHIP;C221K,220PF,50V | GRM36X7R221K50PT |
| 102 | C353 | 2203-000628 | C-CERAMIC,CHIP;C220J,22PF,50V | GRM36C0G220J50PT |
| 103 | C152,C153,C158 | 2203-000679 | C-CERAMIC,CHIP;C270J,27PF,50V | GRM36C0G270J50PT |
| 104 | C159,C161,C165,C167 | 2203-000679 | C-CERAMIC,CHIP;C270J,27PF,50V | GRM36C0G270J50PT |
| 105 | C337,C339 | 2203-000679 | C-CERAMIC,CHIP;C270J,27PF,50V | GRM36C0G270J50PT |
| 106 | C345,C356,C369 | 2203-000679 | C-CERAMIC,CHIP;C270J,27PF,50V | GRM36C0G270J50PT |
| 107 | C394,C709 | 2203-000679 | C-CERAMIC,CHIP;C270J,27PF,50V | GRM36C0G270J50PT |
| 108 | C118,C121,C134,C141 | 2203-000812 | C-CERAMIC,CHIP;C330J,33PF,50V | GRM36C0G330J50PT |
| 109 | C148,C177,C182 | 2203-000812 | C-CERAMIC,CHIP;C330J,33PF,50V | GRM36C0G330J50PT |
| 110 | C193 | 2203-000812 | C-CERAMIC,CHIP;C330J,33PF,50V | GRM36C0G330J50PT |
| 111 | C711,C712 | 2203-000812 | C-CERAMIC,CHIP;C330J,33PF,50V | GRM36C0G330J50PT |
| 112 | C334,C627 | 2203-000995 | C-CERAMIC,CHIP;C470J,47PF,50V | GRM36C0G470J50PT |
| 113 | C334,C627 | 2203-000995 | C-CERAMIC,CHIP;C470J,47PF,50V | GRM36C0G470J50PT |
| 114 | C361 | 2203-001072 | C-CERAMIC,CHIP;0.056nF,5% | GRM36C0G560J50PT |
| 115 | C178,C180 | 2203-001201 | C-CERAMIC,CHIP;0.007nF,0.5pF,50V | GRM36C0G070D50PT |
| 116 | C323 | 2203-001221 | C-CERAMIC,CHIP;C821K,820PF,50V | GRM36X7R821K50PT |
| 117 | C312 | 2203-001383 | C-CERAMIC,CHIP;C0R5C,0.5PF,50V | GRM36C0G0R5C50PT |
| 118 | C301,C315 | 2203-002525 | C-CERAMIC,CHIP;C561K,560PF,50V | GRM36X7R561K50PT |
| 119 | C403 | 2203-002687 | C-CERAMIC,CHIP;C122K,1.2NF,50V | GRM36X7R122K50PT |
| 120 | C155,C168,C170 | 2203-003054 | C-CERAMIC,CHIP;C090C,9PF,50V | GRM36C0G090C50PT |
| 121 | C400 | 2203-005054 | C-CERAMIC,CHIP;C4R7C,4.7PF,50V | GRM36C0G4R7C50PT |
| 122 | C404,C340 | 2203-005056 | C-CERAMIC,CHIP;C6R8C,6.8PF,50V | GRM36C0G6R8D50PT |
| 123 | C378,C379 | 2203-005057 | C-CERAMIC,CHIP;C8R2C,8.2PF,50V | GRM36C0G8R2D50PT |
| 124 | C102,C106,C114,C116 | 2203-005061 | C-CERAMIC,CHIP;C104Z,100NF,16V | GRM36Y5V104Z16PT |
| 125 | C163,C173,C174,C186 | 2203-005061 | C-CERAMIC,CHIP;C104Z,100NF,16V | GRM36Y5V104Z16PT |

| | SEC CODE | Reference | Part Description | Vendor Part No. |
|-----|----------------|-------------|----------------------------------|--------------------------|
| 126 | C205,C303,C304 | 2203-005061 | C-CERAMIC,CHIP;C104Z,100NF,16V | GRM36Y5V104Z16PT |
| 127 | C308,C316 | 2203-005061 | C-CERAMIC,CHIP;C104Z,100NF,16V | GRM36Y5V104Z16PT |
| 128 | C705 | 2203-005061 | C-CERAMIC,CHIP;C104Z,100NF,16V | GRM36Y5V104Z16PT |
| 129 | C104,C125 | 2203-005065 | C-CERAMIC,CHIP;C105Z,1UF,10V | GRM39Y5V105Z10PT |
| 130 | C702,C743 | 2203-005065 | C-CERAMIC,CHIP;C105Z,1UF,10V | GRM39Y5V105Z10PT |
| 131 | C352 | 2203-005138 | C-CERAMIC,CHIP;C182K,1.8NF,50V | GRM36X7R182K50PT |
| 132 | C309,C310 | 2203-005382 | C-CERAMIC,CHIP;C060B,6PF,50V | GRM36C0G060B50PT |
| 133 | C364 | 2203-005446 | C-CERAMIC,CHIP;C2R7B,2.7PF,50V | GRM36C0G2R7B50PT |
| 134 | C335 | 2203-005450 | C-CERAMIC,CHIP;C5R6B,5.6PF,50V | GRM36C0G5R6B50PT |
| 135 | C187,C188 | 2203-005480 | C-CERAMIC,CHIP;C333K,33NF,10V | GRM36X7R333K10PT |
| 136 | C184 | 2203-005481 | C-CERAMIC,CHIP;C473K,47NF,10V | GRM36X7R473K10PT |
| 137 | C146,C149 | 2203-005503 | C-CERAMIC,CHIP;C1801J,180PF,25V | GRM36C0H181J25PT |
| 138 | C117,C124 | 2203-005664 | C-CERAMIC,CHIP;C475K,4.7UF,6.3V | GRM40034X5R475K6.3PT |
| 139 | C710 | 2404-000318 | C-TA,CHIP;6.8UF/16V | TCSCS1C685MBAR |
| 140 | C105 | 2404-001105 | C-TA,CHIP;10UF/6.3V | TAJR106M006R |
| 141 | C204 | 2404-001162 | C-TA,CHIP;F950G476MAAJZTQ2 | F950G476MAAJZTQ2 |
| 142 | L325 | 2703-001174 | INDUCTOR-SMD;LL1608-FH33NJ | LL1608-FH33NJ |
| 143 | L305,L306 | 2703-001293 | INDUCTOR-SMD;HK1608-82NJ-T | HK1608-82NJ-T |
| 144 | L308 | 2703-001514 | INDUCTOR-SMD;0603CS-68NXJBC | 0603CS-68NXJBC |
| 145 | L310 | 2703-001685 | INDUCTOR-SMD;0603CS-82NXJBC | 0603CS-82NXJBC |
| 146 | L385 | 2703-001708 | INDUCTOR-SMD;HK1005-5N6K-T | HK1005-5N6K-T |
| 147 | L316 | 2703-001726 | INDUCTOR-SMD;LL1005-FH27NJ | LL1005-FH27NJ |
| 148 | L323,L324 | 2703-001727 | INDUCTOR-SMD;LL1005-FH22NJ | LL1005-FH22NJ |
| 149 | L635 | 2703-001730 | INDUCTOR-SMD;LL1005-FH15NJ | LL1005-FH15NJ |
| 150 | L318,L634 | 2703-001734 | INDUCTOR-SMD;LL1005-FH6N8J | LL1005-FH6N8J |
| 151 | L301 | 2703-001750 | INDUCTOR-SMD;LL1005-FH2N2S | LL1005-FH2N2S |
| 152 | L101 | 2703-001752 | INDUCTOR-SMD;LL1005-FH39NJ | LL1005-FH39NJ |
| 153 | L304 | 2703-001786 | INDUCTOR-SMD;LL1005-FH10NJ | LL1005-FH10NJ |
| 154 | L637,L638 | 2703-001798 | INDUCTOR-SMD;HK1005-2N2S | HK1005-2N2S |
| 155 | L303 | 2703-001944 | INDUCTOR-SMD;LL1055-F27NJ | LL1055-F27NJ |
| 156 | L639,L613 | 2703-001954 | INDUCTOR-SMD;2.7nH | HK1005-2N7S-T |
| 157 | L636 | 2703-001992 | INDUCTOR-SMD;MLK1005S1N0ST | MLK1005S1N0ST |
| 158 | OSC101 | 2801-003856 | COMP-SMD;MC-146(32.768KHz,20ppm) | MC-146 |
| 159 | U303 | 2809-001237 | COMP-SMD;KT16-KEU28L-13.000M | KT16-KEU28L-13.000M |
| 160 | F306 | 2901-001116 | COMP-SMD;NFM39R12C471T1 | NFM39R12C471T1 |
| 161 | U601 | 2903-001266 | COMP-SMD;MKFC225.000MBA701X-TC11 | MKFC225.000MBA701X- TC11 |
| 162 | F303 | 2904-001226 | COMP-SMD;B4121 | B4121 |
| 163 | F302 | 2904-001228 | COMP-SMD;B4133 | B4133 |
| 164 | U603 | 2904-001235 | COMP-SMD;FAR-G6CH-1G8425-L218 | FAR-G6CH-1G8425-L218 |
| 165 | U318 | 4709-001174 | COMP-SMD;LDC15D140A0001 | DC15D140A0001 |
| 166 | ZD105 | 1405-001082 | IC;VC040205X150R | VC040205X150R |

3-2 Main Parts List Bottom

| | SEC CODE | Reference | Part Description | Vendor Part No. |
|----|-----------|-------------|------------------------------------|-------------------|
| 1 | J301 | 3705-001239 | COMP-SMD;MHC-175 | MHC-175 |
| 2 | L302 | 2703-001772 | INDUCTOR-SMD;18NH,5%,1.0X0.5X0.5MM | MLK1005S18NJ |
| 3 | F307 | 2901-001116 | COMP-SMD;NFM39R12C471T1 | FM39R12C471T1 |
| 4 | R330 | 2007-001305 | R-CHIP;120,5% | ERJ2GEJ121X |
| 5 | C747 | 2203-005057 | C-CERAMIC,CHIP;C8R2C,8.2PF,50V | GRM36C0G8R2D50PT |
| 6 | C402 | 2203-000812 | C-CERAMIC,CHIP;C330J,33PF,50V | GRM36C0G330J50PT |
| 7 | C756 | 2404-001105 | C-TA,CHIP;10UF/6.3V | TAJR106M006R |
| 8 | C396 | 2404-001210 | C-TA,CHIP;220UF/6.3V | 952D227X06R3U2T |
| 9 | U304 | 2909-001126 | COMP-SMD;SHS-L090DE | SHS-L090DE |
| 10 | U312 | 1201-001689 | IC;PF08107B-TB | PF08107B-TB |
| 11 | L311,L314 | 2703-001723 | INDUCTOR-SMD;LL1005-FH33NJ | LL1005-FH33NJ |
| 12 | R335,R366 | 2007-002965 | R-CHIP;15,5% | RK73K1ETP150J |
| 13 | R364 | 2007-007009 | R-CHIP;75ohm,5% | ERJ2GEJ750X |
| 14 | R365,R346 | 2007-001288 | R-CHIP;18,5% | ERJ2GEJ180X |
| 15 | R363 | 2007-003022 | R-CHIP;62,5% | ERJ2GEJ620X |
| 16 | C697 | 2203-000812 | C-CERAMIC,CHIP;C330J,33PF,50V | GRM36C0G330J50PT |
| 17 | C387 | 2203-000679 | C-CERAMIC,CHIP;C270J,27PF,50V | GRM36C0G270J50PT |
| 18 | C387 | 2203-000812 | C-CERAMIC,CHIP;C330J,33PF,50V | GRM36C0G330J50PT |
| 19 | C377 | 2203-000254 | C-CERAMIC,CHIP;C103K,10NF,16V | GRM36X7R103K16PT |
| 20 | R667 | 2007-000138 | R-CHIP;100,5% | RK73K1ETP101J |
| 21 | C383 | 2203-000278 | C-CERAMIC,CHIP;C100D,10PF,50V | GRM36C0G100D50PT |
| 22 | R666 | 2007-000174 | R-CHIP;47,5% | ERJ2GEJ470X |
| 23 | R337 | 2007-001313 | R-CHIP;330,5% | ERJ2GEJ331X |
| 24 | C755 | 2203-000995 | C-CERAMIC,CHIP;C470J,47PF,50V | GRM36C0G470J50PT |
| 25 | C754 | 2203-000995 | C-CERAMIC,CHIP;C470J,47PF,50V | GRM36C0G470J50PT |
| 26 | ZD107 | 1405-001082 | IC;VC040205X150R | VC040205X150R |
| 27 | C169 | 2203-000679 | C-CERAMIC,CHIP;C270J,27PF,50V | GRM36C0G270J50PT |
| 28 | C122 | 2203-005444 | C-CERAMIC,CHIP;C030B,3PF,50V | GRM36C0G470J112PT |
| 29 | J101 | 3722-001587 | COMP-SMD;02-828D0-53BKA | 02-828D0-53BKA |
| 30 | ZD108 | 0406-001083 | TR-SMALL SIGNAL;ESDA6V1W5 | ESDA6V1W5 |
| 31 | V105 | 1405-001019 | IC;VC060305A150R | VC060305A150R |
| 32 | ZD102 | 1405-001082 | IC;VC040205X150R | VC040205X150R |
| 33 | C723 | 2203-005444 | C-CERAMIC,CHIP;C030B,3PF,50V | GRM36C0G470J112PT |
| 34 | C719 | 2203-000679 | C-CERAMIC,CHIP;C270J,27PF,50V | GRM36C0G270J50PT |
| 35 | C752 | 2203-000679 | C-CERAMIC,CHIP;C270J,27PF,50V | GRM36C0G270J50PT |
| 36 | C722 | 2203-005444 | C-CERAMIC,CHIP;C030B,3PF,50V | GRM36C0G470J112PT |
| 37 | ZD101 | 1405-001082 | IC;VC040205X150R | VC040205X150R |
| 38 | C718 | 2203-000679 | C-CERAMIC,CHIP;C270J,27PF,50V | GRM36C0G270J50PT |
| 39 | V102 | 1405-001019 | IC;VC060305A150R | IC;VC060305A150R |
| 40 | R674 | 2007-000148 | R-CHIP;10K,5% | RK73K1ETP103J |
| 41 | R675 | 2007-000148 | R-CHIP;10K,5% | RK73K1ETP103J |
| 42 | U640 | 0801-002540 | IC;NC7SZ19P6X | NC7SZ19P6X |

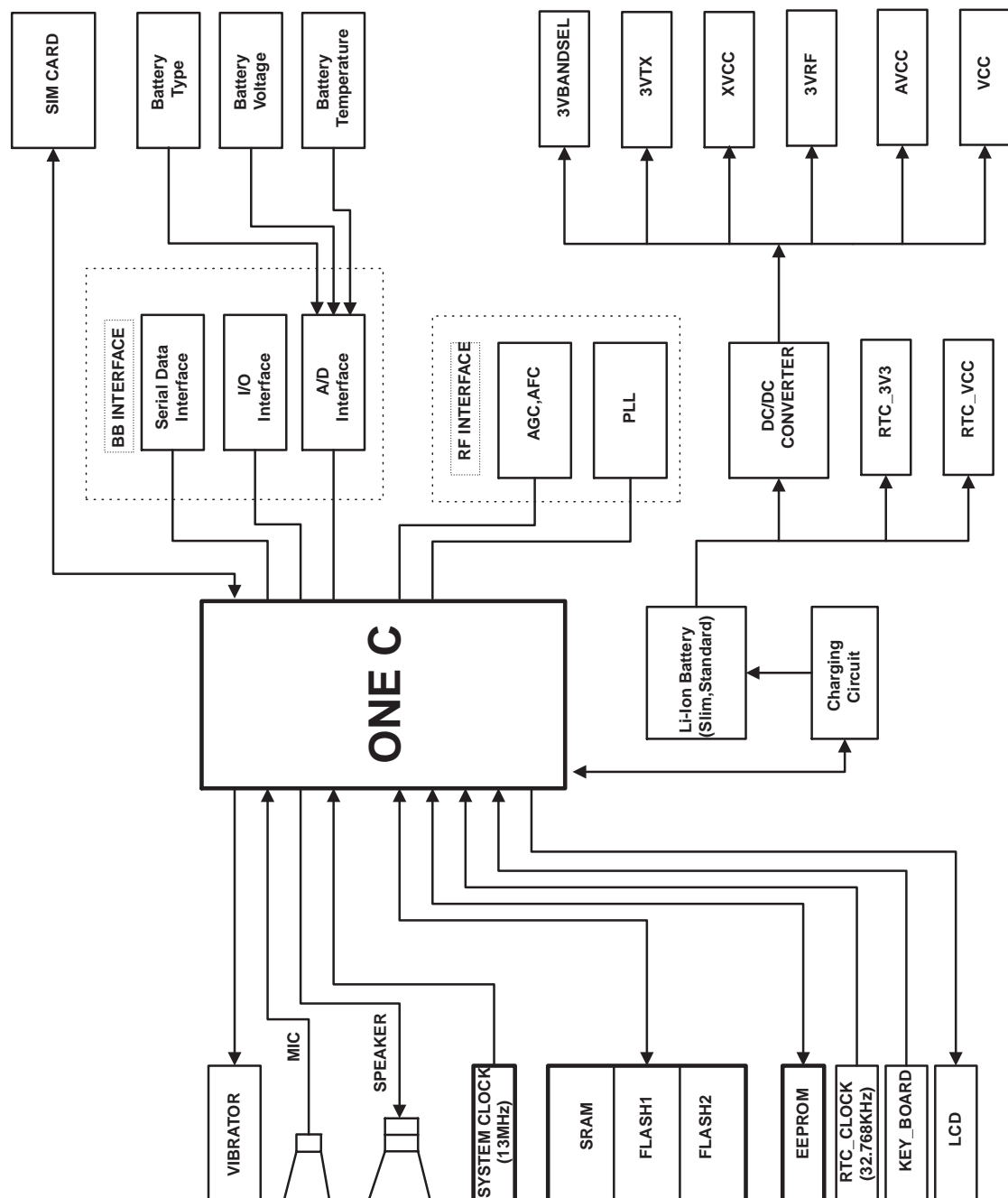
| | SEC CODE | Reference | Part Description | Vendor Part No. |
|----|----------|-------------|--------------------------------|-------------------|
| 43 | R119 | 2007-007771 | R-CHIP;0,5% | ERJ2GEJ0R0E |
| 44 | C753 | 2203-000679 | C-CERAMIC,CHIP;C270J,27PF,50V | GRM36C0G270J50PT |
| 45 | CN105 | 3710-001428 | COMP-SMD;AXK5F24335J | AXK5F24335J |
| 46 | U200 | 2806-001239 | COMP-SMD;V0F1748C28KRD | V0F1748C28KRD |
| 47 | C391 | 2203-005065 | C-CERAMIC,CHIP;C105Z,1UF,10V | GRM36C0G470J101PT |
| 48 | C392 | 2203-000679 | C-CERAMIC,CHIP;C270J,27PF,50V | GRM36C0G270J50PT |
| 49 | R343 | 2007-007771 | R-CHIP;0,5% | ERJ2GEJ0R0E |
| 50 | R331 | 2007-000138 | R-CHIP;100,5% | RK73K1ETP101J |
| 51 | C365 | 2301-001232 | C-CERAMIC,CHIP;470PF,50V | GRM36C0G470J125PT |
| 52 | R325 | 2007-001290 | R-CHIP;24,5% | RK73K1ETP240J |
| 53 | C359 | 2301-001199 | C-CERAMIC,CHIP;22NF,16V | GRM36C0G470J124PT |
| 54 | C750 | 2203-000679 | C-CERAMIC,CHIP;C270J,27PF,50V | GRM36C0G270J50PT |
| 55 | C749 | 2203-000679 | C-CERAMIC,CHIP;C270J,27PF,50V | GRM36C0G270J50PT |
| 56 | C748 | 2203-000679 | C-CERAMIC,CHIP;C270J,27PF,50V | GRM36C0G270J50PT |
| 57 | R698 | 2007-000147 | R-CHIP;8.2K,5% | ERJ2GEJ822X |
| 58 | C751 | 2203-000679 | C-CERAMIC,CHIP;C270J,27PF,50V | GRM36C0G270J50PT |
| 59 | CN102 | 3709-001144 | COMP-SMD;1318723-6 | 1318723-6 |
| 60 | C744 | 2203-000812 | C-CERAMIC,CHIP;C330J,33PF,50V | GRM36C0G330J50PT |
| 61 | R183 | 2007-000157 | R-CHIP;47K,5% | RK73K1ETP473J |
| 62 | C192 | 2203-000812 | C-CERAMIC,CHIP;C330J,33PF,50V | GRM36C0G330J50PT |
| 63 | R171 | 2007-000162 | R-CHIP;100K,5% | RK73K1ETP104J |
| 64 | C157 | 2203-000812 | C-CERAMIC,CHIP;C330J,33PF,50V | GRM36C0G330J50PT |
| 65 | C115 | 2203-000254 | C-CERAMIC,CHIP;C103K,10NF,16V | GRM36X7R103K16PT |
| 66 | C732 | 2203-001221 | C-CERAMIC,CHIP;C821K,820PF,50V | GRM36C0G470J58PT |
| 67 | C727 | 2203-001221 | C-CERAMIC,CHIP;C821K,820PF,50V | GRM36C0G470J58PT |
| 68 | C729 | 2203-001221 | C-CERAMIC,CHIP;C821K,820PF,50V | GRM36C0G470J58PT |
| 69 | R684 | 2007-000140 | R-CHIP;1K,5% | RK73K1ETP102J |
| 70 | C730 | 2203-001221 | C-CERAMIC,CHIP;C821K,820PF,50V | GRM36C0G470J58PT |
| 71 | R688 | 2007-000140 | R-CHIP;1K,5% | RK73K1ETP102J |
| 72 | R680 | 2007-000140 | R-CHIP;1K,5% | RK73K1ETP102J |
| 73 | R682 | 2007-000140 | R-CHIP;1K,5% | RK73K1ETP102J |
| 74 | R685 | 2007-000140 | R-CHIP;1K,5% | RK73K1ETP102J |
| 75 | R687 | 2007-000140 | R-CHIP;1K,5% | RK73K1ETP102J |
| 76 | C734 | 2203-001221 | C-CERAMIC,CHIP;C821K,820PF,50V | GRM36C0G470J58PT |
| 77 | C726 | 2203-001221 | C-CERAMIC,CHIP;C821K,820PF,50V | GRM36C0G470J58PT |
| 78 | C728 | 2203-001221 | C-CERAMIC,CHIP;C821K,820PF,50V | GRM36C0G470J58PT |
| 79 | C731 | 2203-001221 | C-CERAMIC,CHIP;C821K,820PF,50V | GRM36C0G470J58PT |
| 80 | C733 | 2203-001221 | C-CERAMIC,CHIP;C821K,820PF,50V | GRM36C0G470J58PT |
| 81 | C699 | 2404-001105 | C-TA,CHIP;10UF/6.3V | GRM36C0G470J127PT |
| 82 | R164 | 2007-001308 | R-CHIP;200,5% | ERJ2GEJ201X |
| 83 | C209 | 2404-001134 | C-TA,CHIP;100UF/6.3V | GRM36C0G470J134PT |
| 84 | U117 | 1203-001702 | IC;MAX1676EUB-T | MAX1676EUB-T |

| | SEC CODE | Reference | Part Description | Vendor Part No. |
|-----|----------|-------------|--------------------------------|-------------------|
| 85 | L102 | 2703-002025 | INDUCTOR-SMD;BTC-0309-470 | BTC-0309-470 |
| 86 | F307 | 2203-005065 | C-CERAMIC,CHIP;C105Z,1UF,10V | GRM36C0G470J101PT |
| 87 | C328 | 2404-001105 | C-TA,CHIP;10UF/6.3V | GRM36C0G470J127PT |
| 88 | U463 | 1203-002227 | IC;R5320G002-TR | R5320G002-TR |
| 89 | D108 | 0402-001331 | TR-SMALL SIGNAL;CRS04-TE85L | CRS04-TE85L |
| 90 | C746 | 2203-003054 | C-CERAMIC,CHIP;C090C,9PF,50V | GRM36C0G470J73PT |
| 91 | C704 | 2203-005061 | C-CERAMIC,CHIP;C104Z,100NF,16V | GRM36C0G470J84PT |
| 92 | R671 | 2007-007107 | R-CHIP;100K,1% | ERJ2RKF1003X |
| 93 | C555 | 2203-000679 | C-CERAMIC,CHIP;C270J,27PF,50V | GRM36C0G270J50PT |
| 94 | C700 | 2404-001105 | C-TA,CHIP;10UF/6.3V | GRM36C0G470J127PT |
| 95 | C535 | 2203-005065 | C-CERAMIC,CHIP;C105Z,1UF,10V | GRM36C0G470J101PT |
| 96 | C708 | 2203-000254 | C-CERAMIC,CHIP;C103K,10NF,16V | GRM36X7R103K16PT |
| 97 | C424 | 2203-001432 | C-CERAMIC,CHIP;C473K,47NF,16V | GRM36C0G470J69PT |
| 98 | R699 | 2007-007771 | R-CHIP;0,5% | ERJ2GEJ0R0E |
| 99 | R320 | 2007-007590 | R-CHIP;82K,1% | RK73H1ETP8202F |
| 100 | U649 | 1203-001903 | IC;LTC1986ES6 | LTC1986ES6 |
| 101 | C211 | 2203-000254 | C-CERAMIC,CHIP;C103K,10NF,16V | GRM36X7R103K16PT |
| 102 | C208 | 2404-001105 | C-TA,CHIP;10UF/6.3V | GRM36C0G470J127PT |
| 103 | C423 | 2203-005061 | C-CERAMIC,CHIP;C104Z,100NF,16V | GRM36C0G470J84PT |
| 104 | R428 | 2007-003028 | R-CHIP;750K,5% | ERJ2GEJ754X |
| 105 | R421 | 2007-000170 | R-CHIP;1M,5% | ERJ2GEJ105X |
| 106 | C745 | 2404-001105 | C-TA,CHIP;10UF/6.3V | GRM36C0G470J127PT |
| 107 | Q303 | 0501-002346 | TR-SMALL SIGNAL;2SB1427 | 2SB1427 |
| 108 | U116 | 1203-002077 | IC;LP2985AIM5-3.3 | LP2985AIM5-3.3 |
| 109 | C190 | 2203-000233 | C-CERAMIC,CHIP;C101J,100PF,50V | GRM36C0G101J50PT |
| 110 | C111 | 2203-000679 | C-CERAMIC,CHIP;C270J,27PF,50V | GRM36C0G270J50PT |
| 111 | R328 | 2007-000142 | R-CHIP;2.7K,5% | ERJ2GEJ272X |
| 112 | F307 | 3301-001208 | COMP-SMD;BLM11P600SPT | BLM11P600SPT |
| 113 | U639 | 1203-002127 | IC;LTC1734ES6-4.2#TR | LTC1734ES6-4.2#TR |
| 114 | BAT101 | 4302-001119 | COMP-SMD;MS414 FL26N | MS414 FL26N |
| 115 | D110 | 0402-001331 | TR-SMALL SIGNAL;CRS04-TE85L | CRS04-TE85L |
| 116 | R701 | 2007-000140 | R-CHIP;1K,5% | RK73K1ETP102J |
| 117 | C713 | 2203-000254 | C-CERAMIC,CHIP;C103K,10NF,16V | GRM36X7R103K16PT |
| 118 | R703 | 2007-007771 | R-CHIP;0,5% | ERJ2GEJ0R0E |
| 119 | R703 | 1405-001082 | IC;VC040205X150R | VC040205X150R |
| 120 | C721 | 2203-005057 | C-CERAMIC,CHIP;C8R2C,8.2PF,50V | GRM36C0G470J80PT |
| 121 | C717 | 2203-000812 | C-CERAMIC,CHIP;C330J,33PF,50V | GRM36C0G330J50PT |
| 122 | ZD109 | 1405-001082 | IC;VC040205X150R | VC040205X150R |
| 123 | CN503 | 3711-004234 | COMP-SMD;connector | AXK6F24335P |
| 124 | ZD205 | 1405-001082 | IC;VC040205X150R | VC040205X150R |
| 125 | C738 | 2203-000679 | C-CERAMIC,CHIP;C270J,27PF,50V | GRM36C0G470J84PT |
| 126 | ZD203 | 0406-001083 | TR-SMALL SIGNAL;ESDA6V1W5 | ESDA6V1W5 |

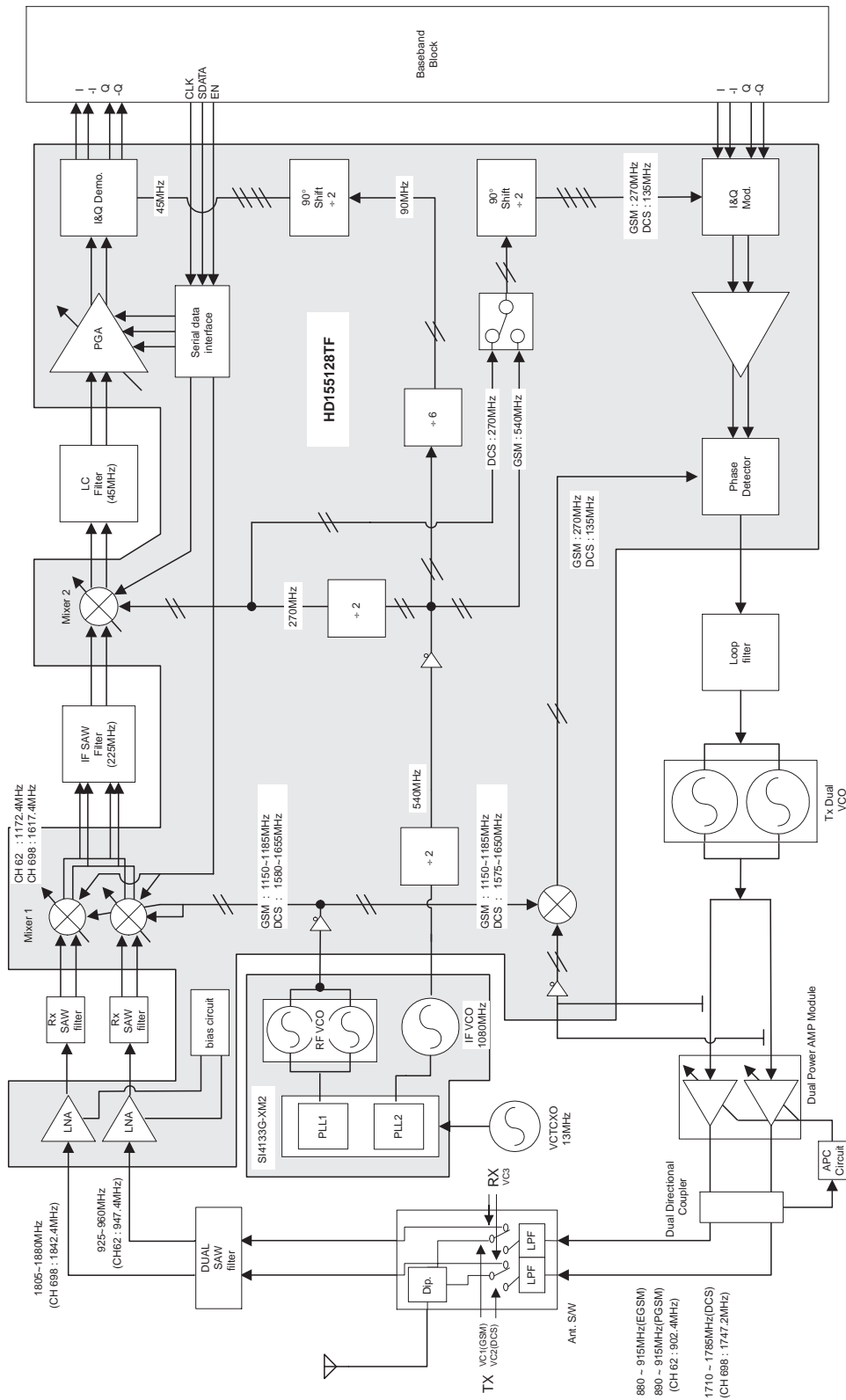
| | SEC CODE | Reference | Part Description | Vendor Part No. |
|-----|-----------|-------------|--------------------------------|------------------|
| 127 | R209 | 2011-001344 | R-CHIP;CRB2A4E101JT | CRB2A4E101JT |
| 128 | F201 | 2901-001116 | COMP-SMD;NFM39R12C471T1 | NFM39R12C471T1 |
| 129 | F200 | 2901-001116 | COMP-SMD;NFM39R12C471T1 | NFM39R12C471T1 |
| 130 | ZD201 | 0406-001104 | TR-SMALL SIGNAL;ESDA6V1-5W6 | ESDA6V1-5W6 |
| 131 | R207 | 2011-001344 | R-CHIP;CRB2A4E101JT | CRB2A4E101JT |
| 132 | C210 | 2203-005061 | C-CERAMIC,CHIP;C104Z,100NF,16V | GRM36C0G470J84PT |
| 133 | C714 | 2203-000679 | C-CERAMIC,CHIP;C270J,27PF,50V | GRM36C0G270J50PT |
| 134 | C201 | 2203-000679 | C-CERAMIC,CHIP;C270J,27PF,50V | GRM36C0G270J50PT |
| 135 | L200 | 2703-001752 | INDUCTOR-SMD;LL1005-FH39NJ | LL1005-FH39NJ |
| 136 | C740,C741 | 2203-000679 | C-CERAMIC,CHIP;C270J,27PF,50V | GRM36C0G270J50PT |
| 137 | V205,V206 | 1405-001082 | IC;VC040205X150R | VC040205X150R |
| 138 | C739 | 2203-000679 | C-CERAMIC,CHIP;C270J,27PF,50V | GRM36C0G270J50PT |
| 139 | ZD202 | 0406-001104 | TR-SMALL SIGNAL;ESDA6V1-5W6 | ESDA6V1-5W6 |
| 140 | R203 | 2007-007771 | R-CHIP;0,5% | ERJ2GEJ0R0E |
| 141 | C715 | 2203-000679 | C-CERAMIC,CHIP;C270J,27PF,50V | GRM36C0G270J50PT |
| 142 | CN502 | 3710-001599 | COMP-SMD;1004-0018-305 | 1004-0018-305 |

4. Block Diagrams

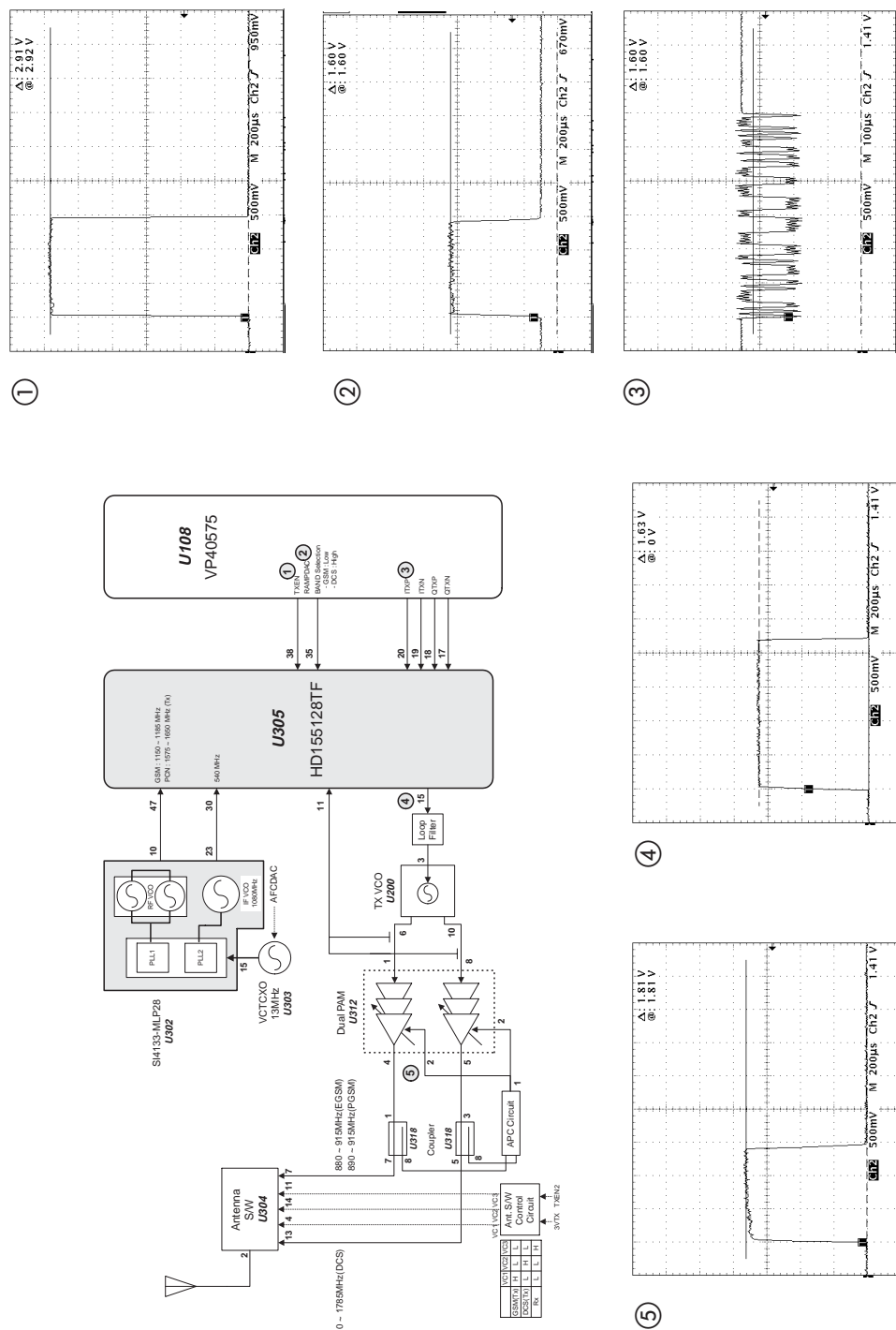
4-1 Main Base Band



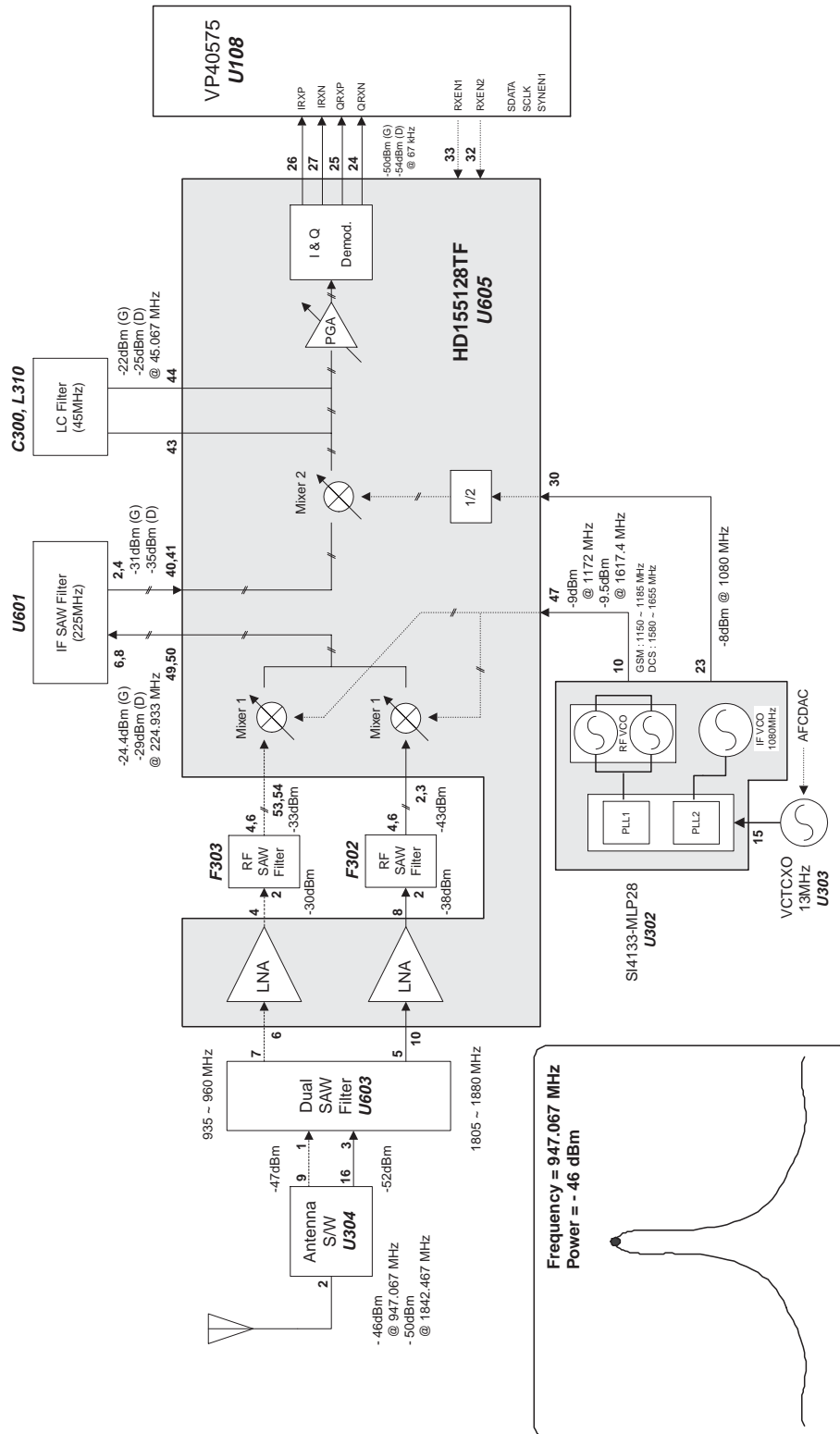
4-2 Main RF



Block Diagrams

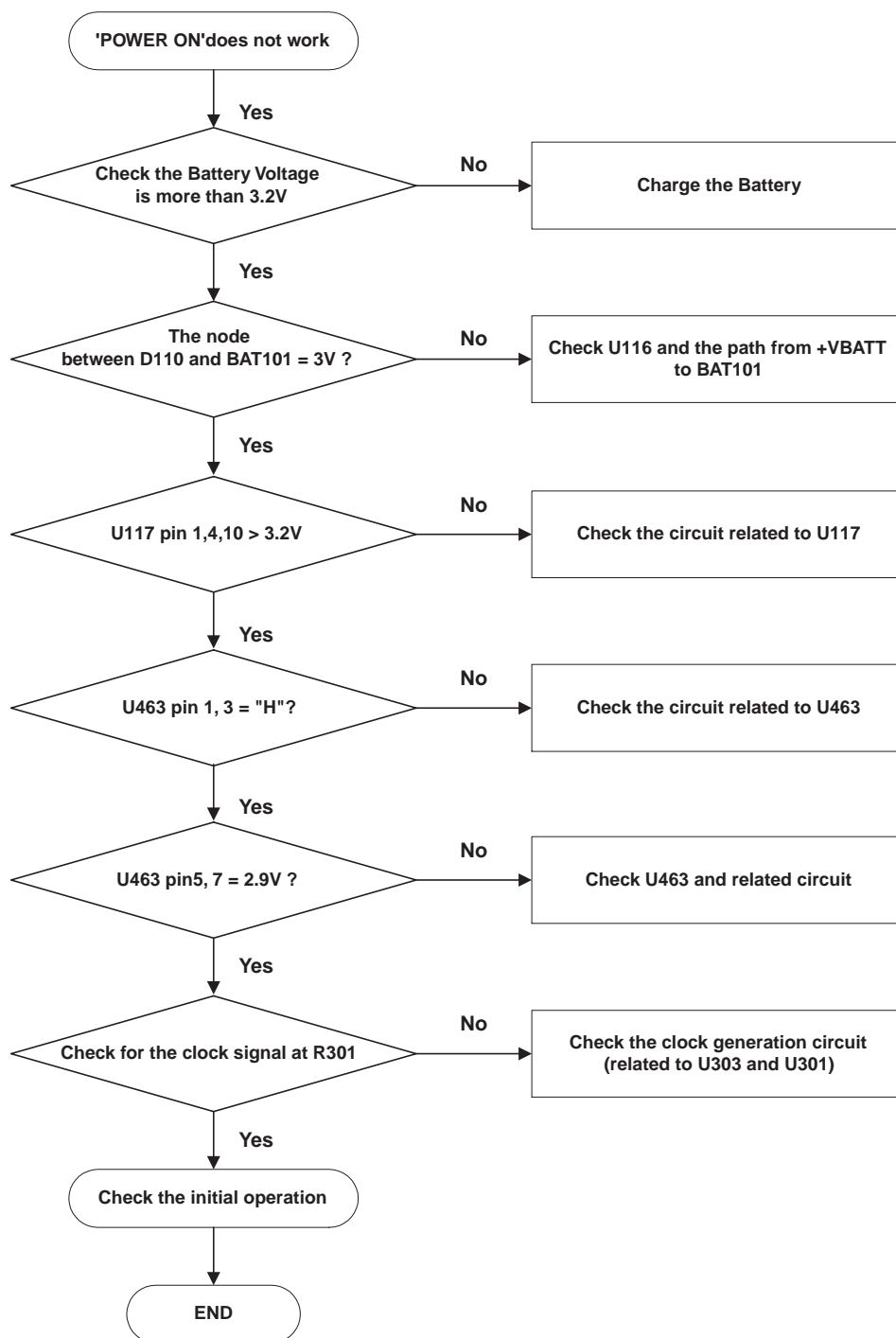


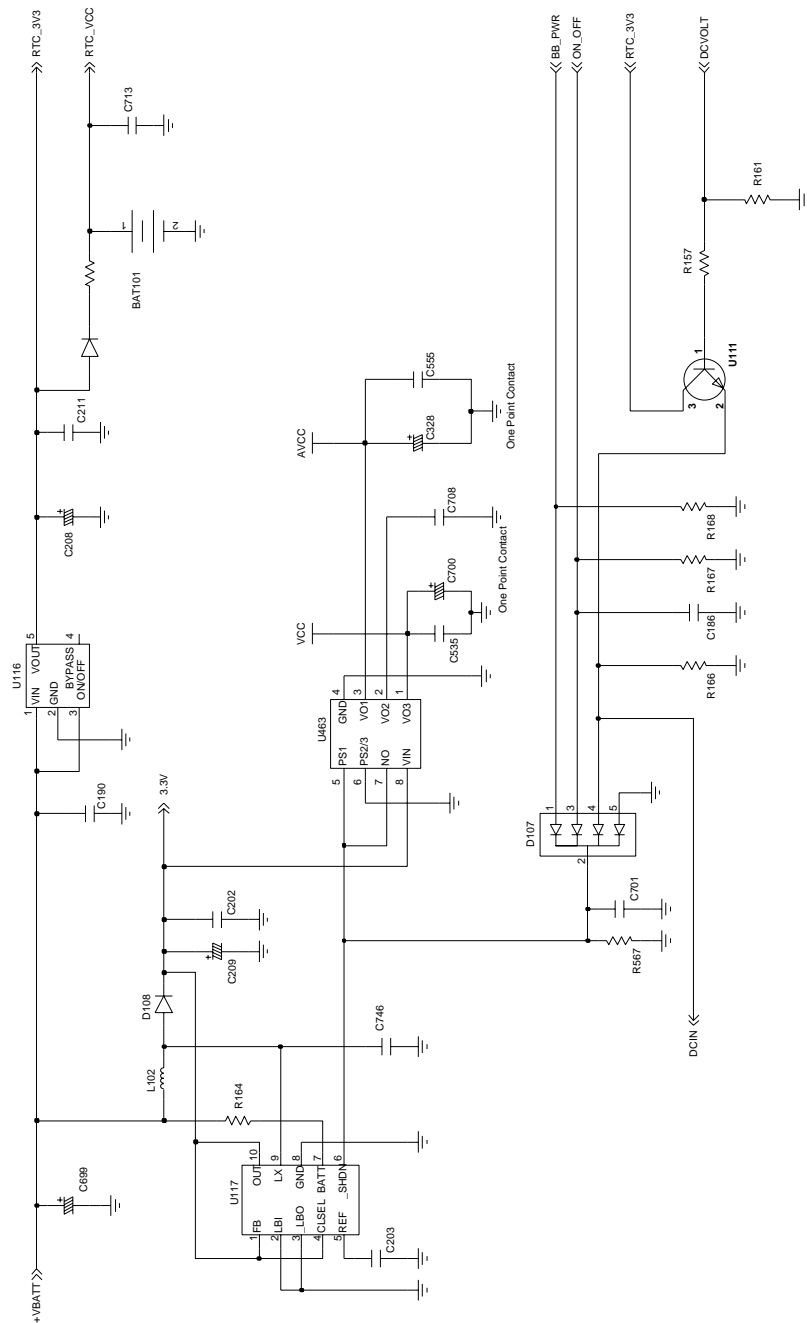
4-2-2 RF Receive Part



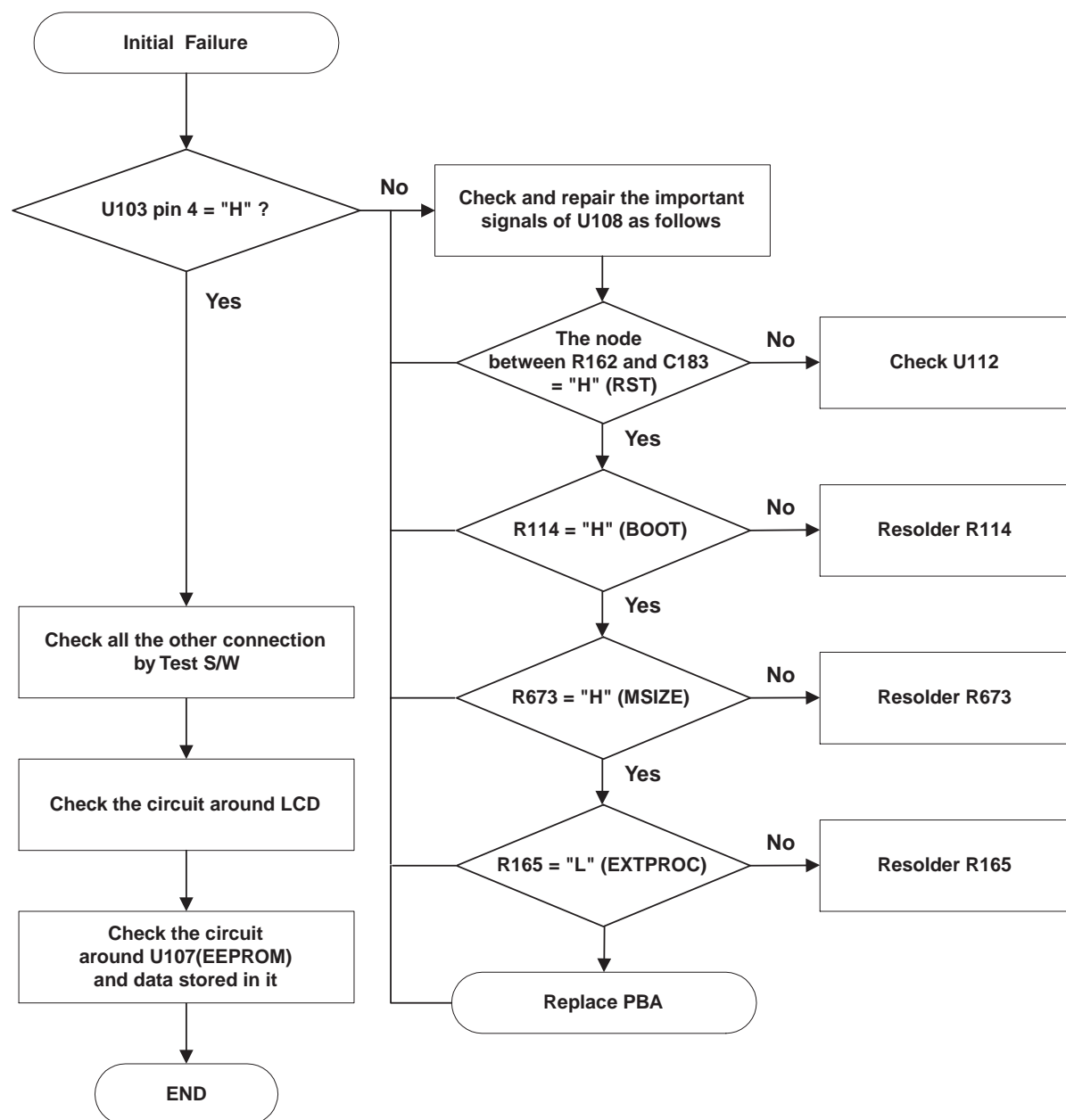
5. Flow Chart of Troubleshooting and Circuit Diagram

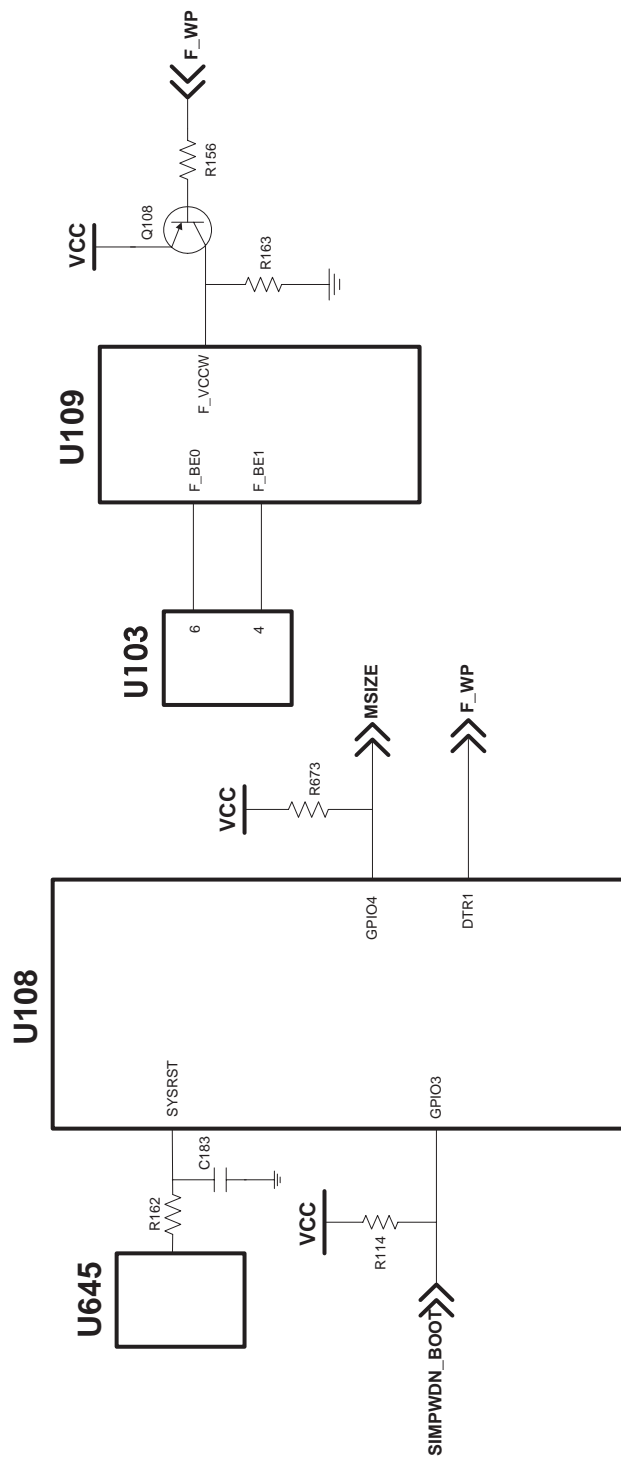
5-1 Power ON



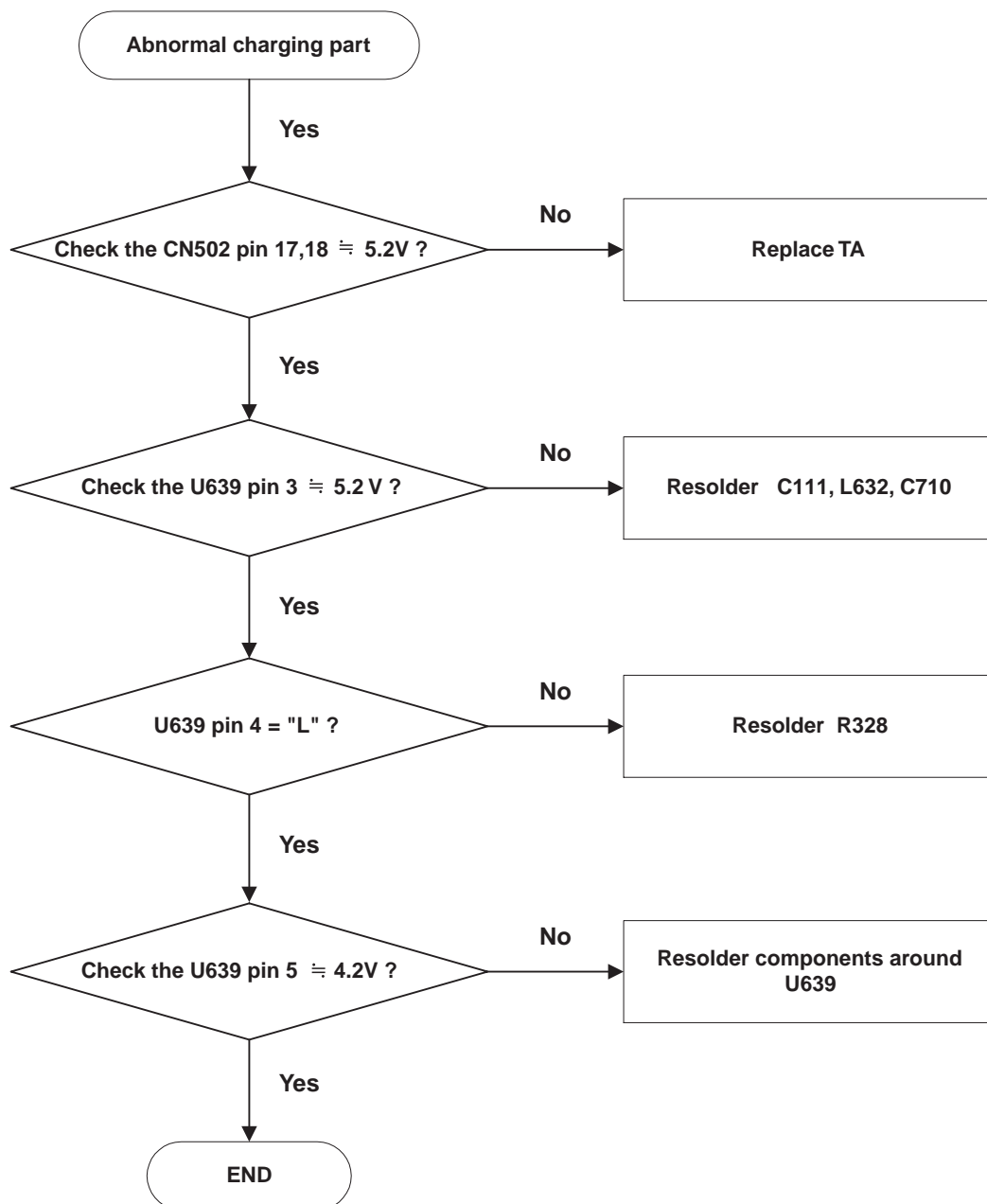


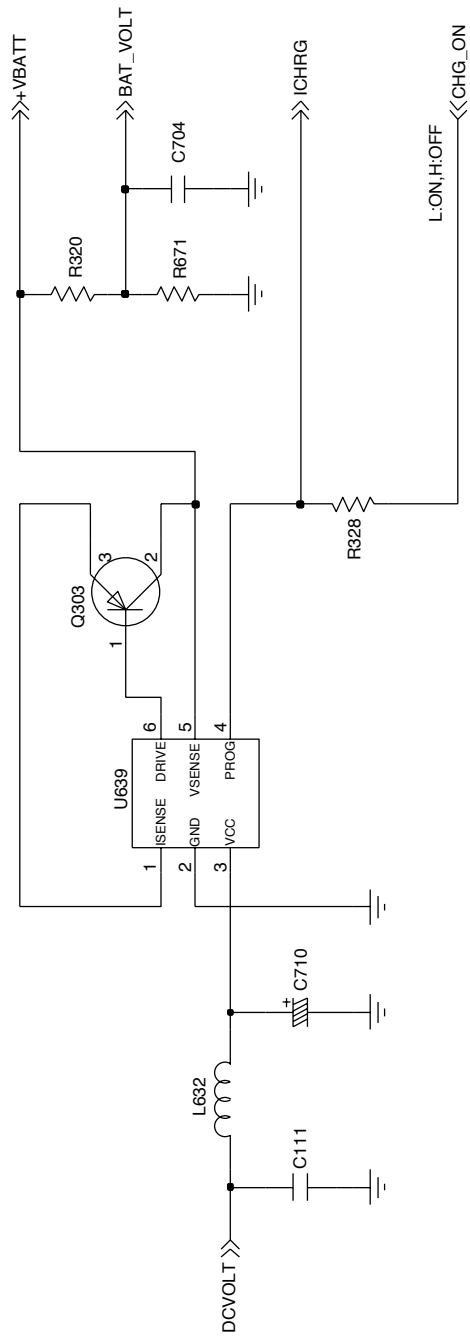
5-2 Initial



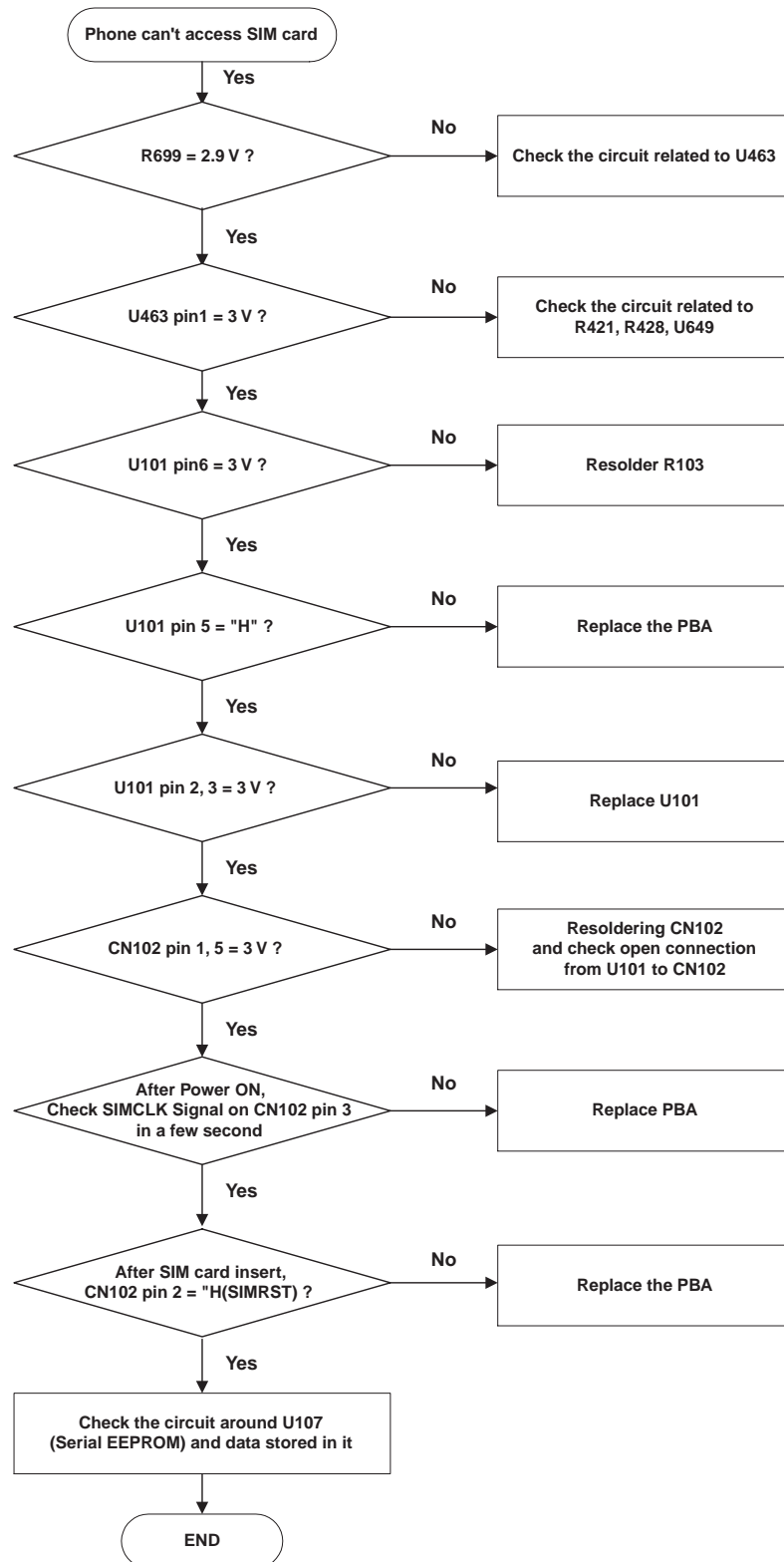


5-3 Charging Part

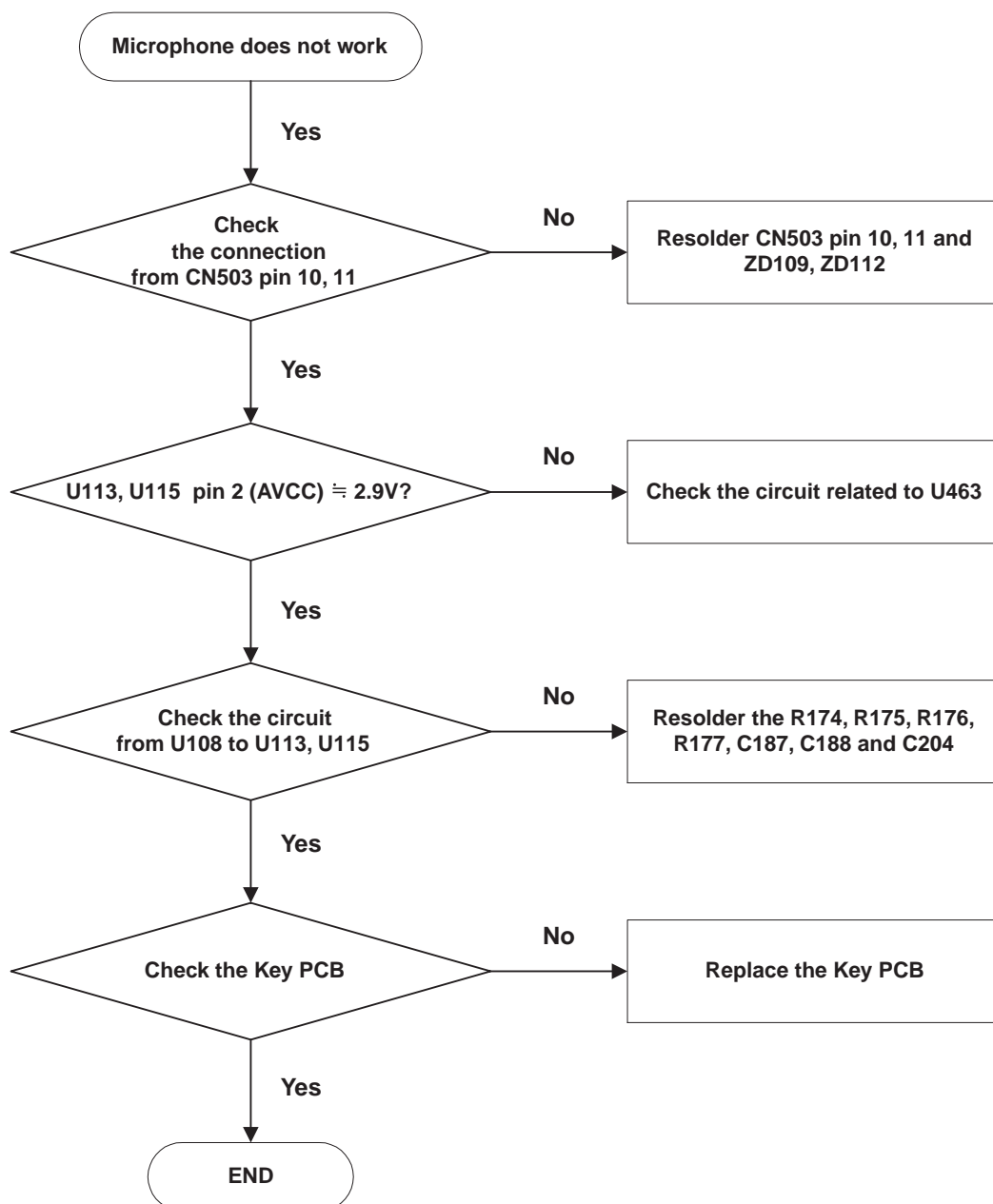


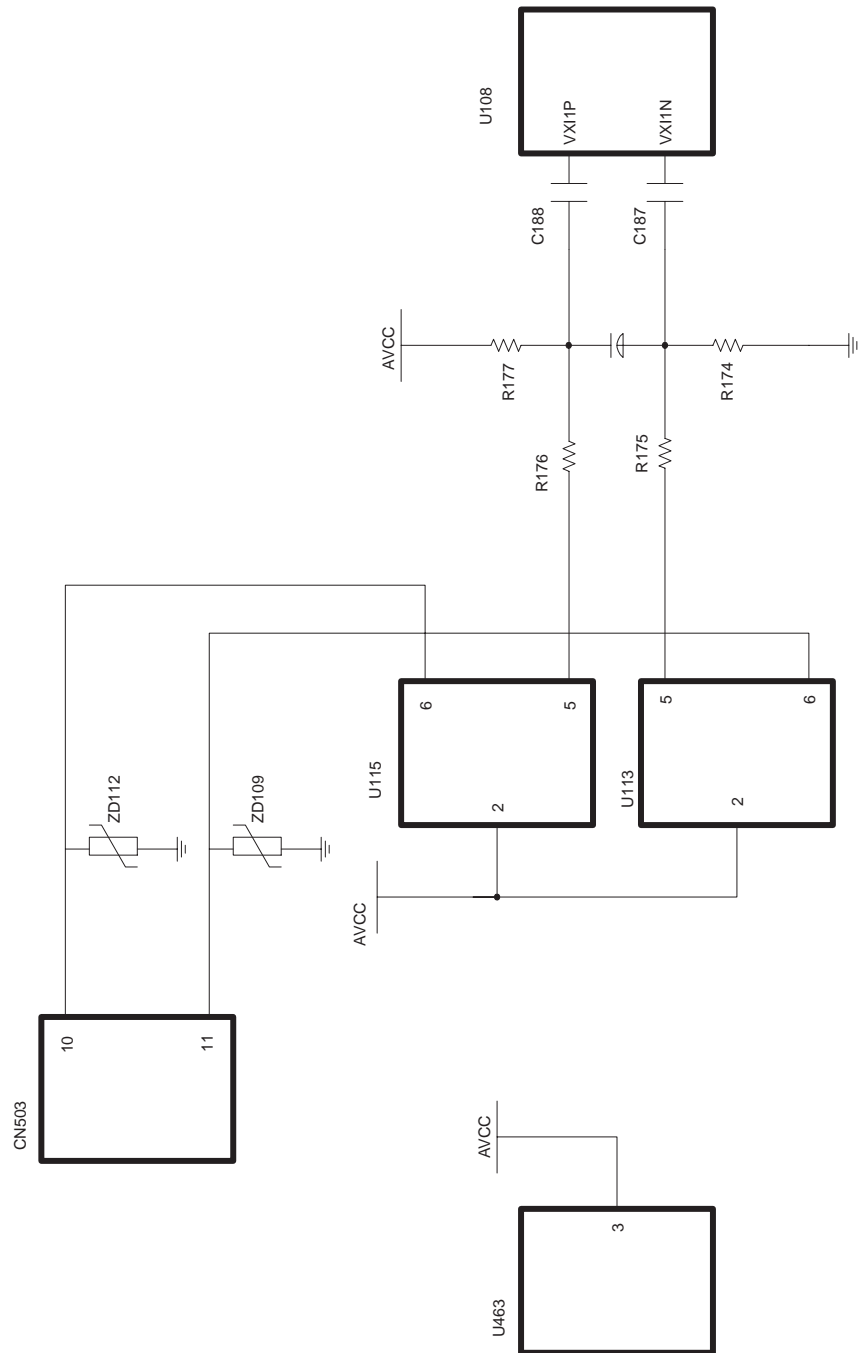


5-4 Sim Part

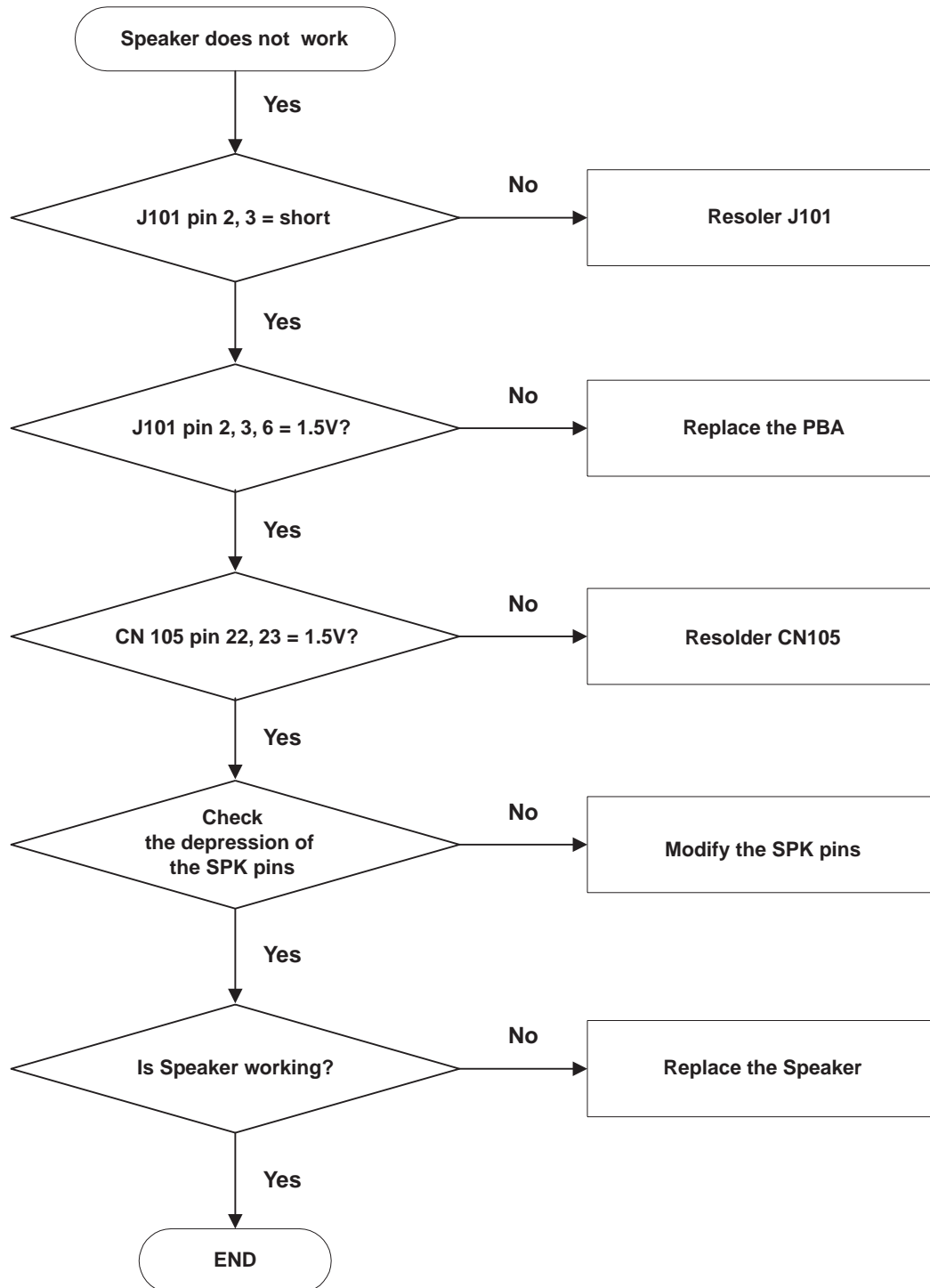


5-5 Microphone Part

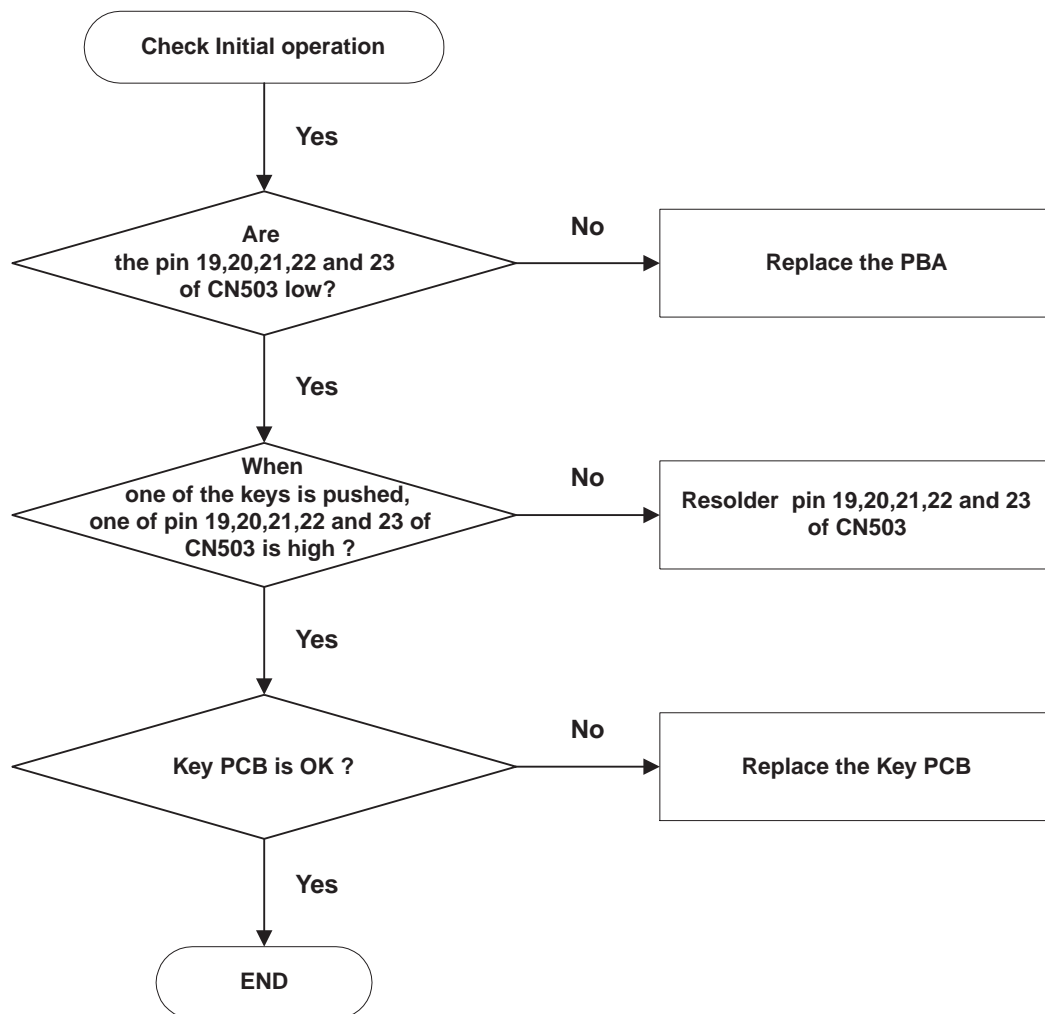




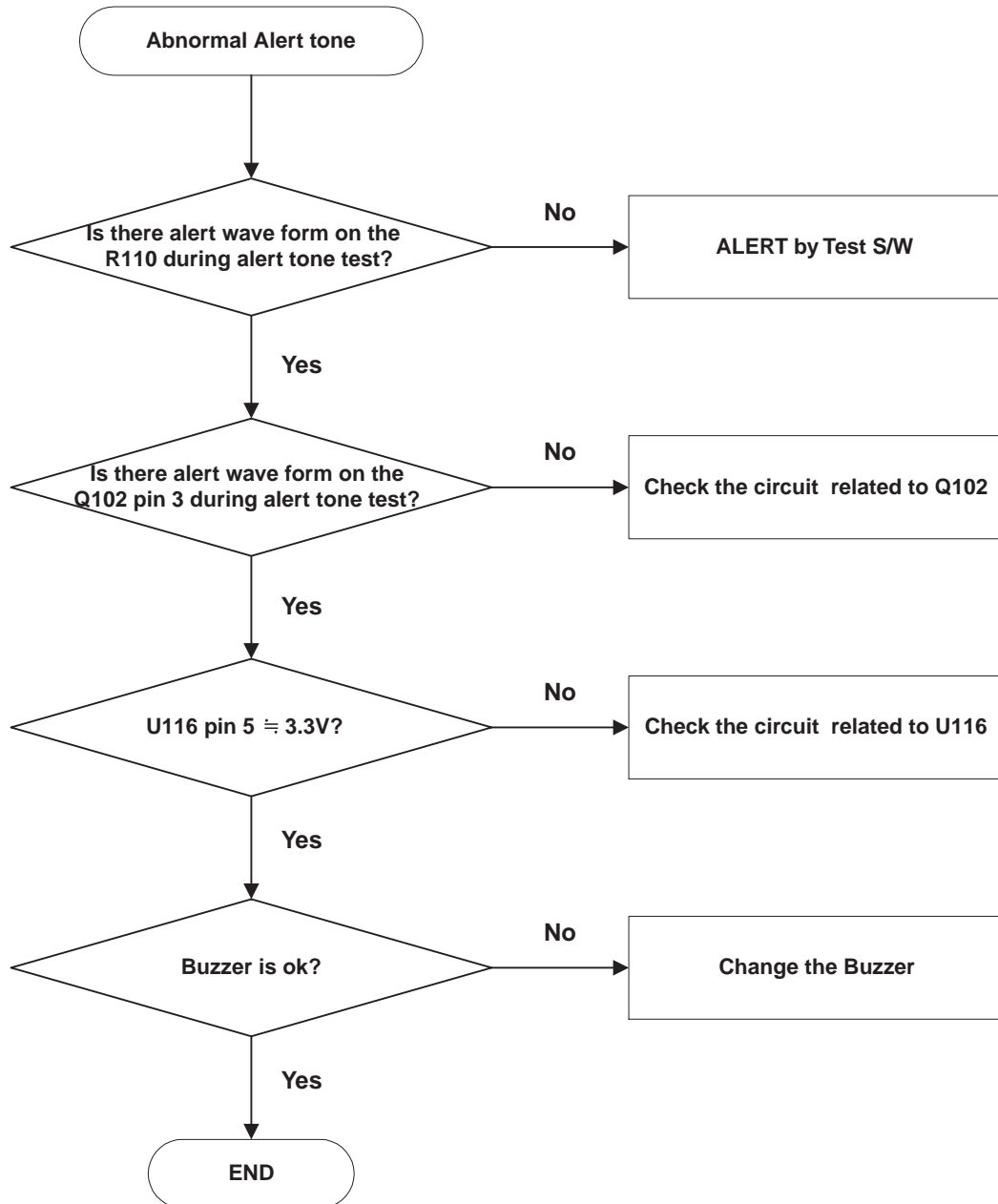
5-6 Speaker Part

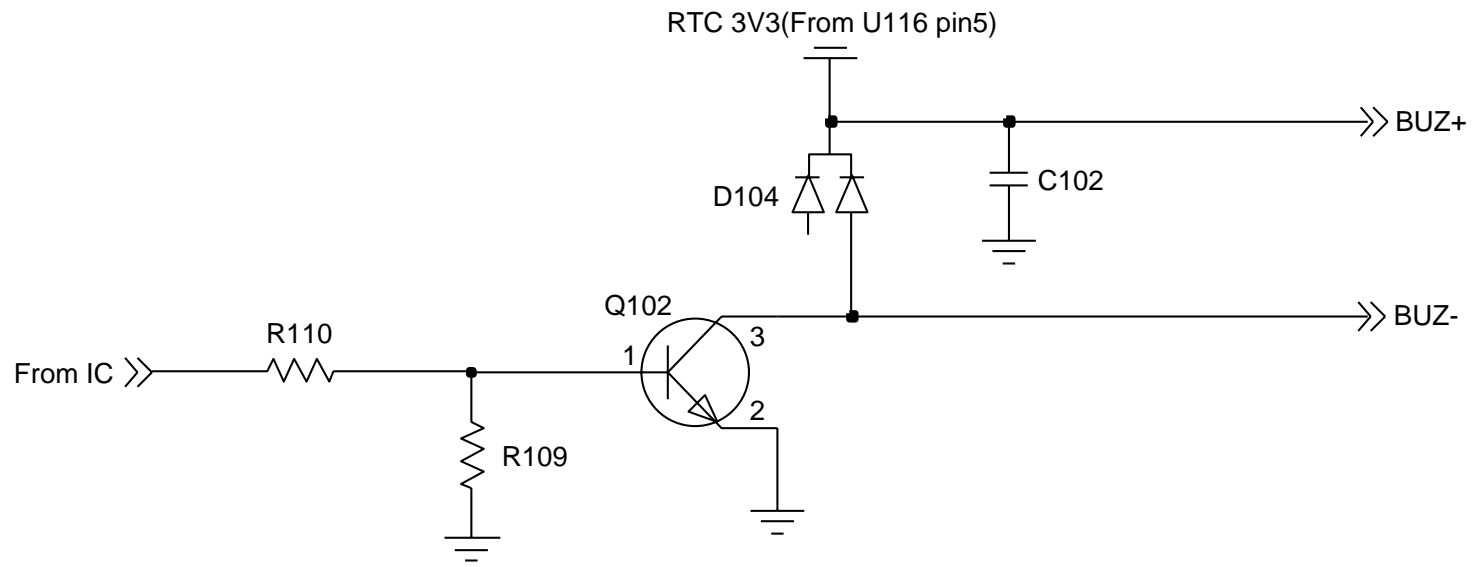


5-7 Key Data Input

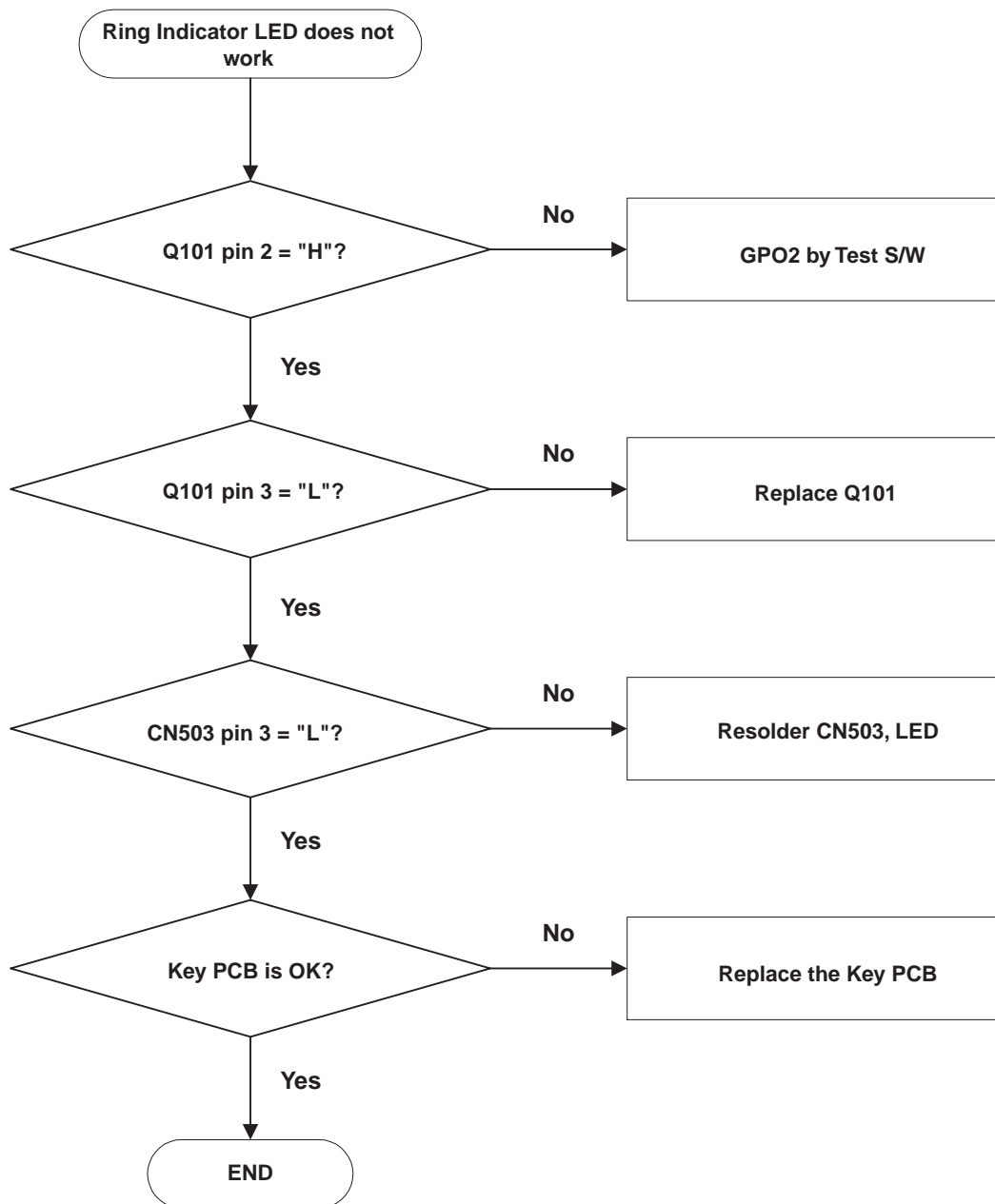


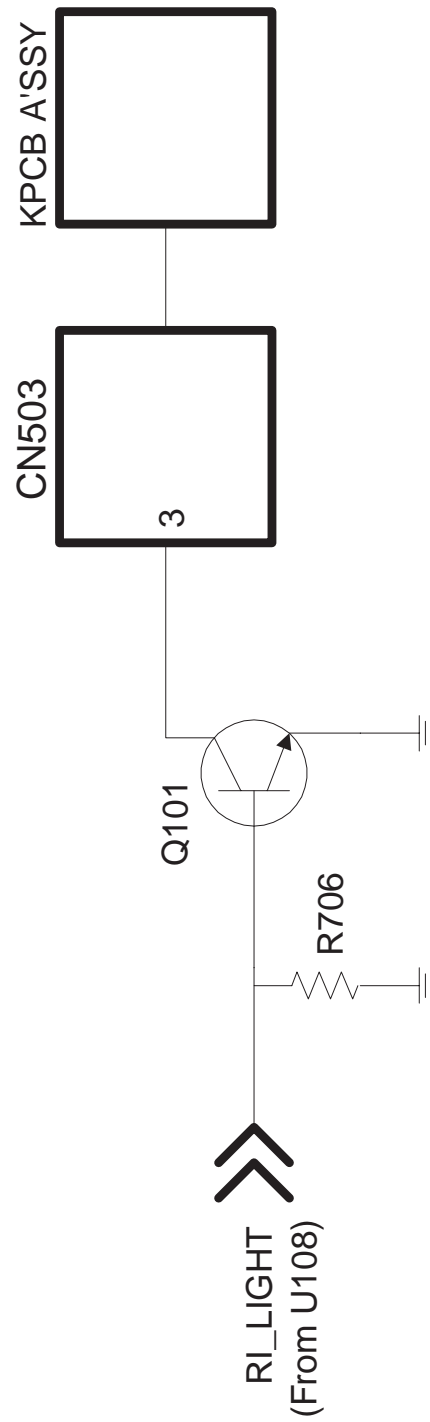
5-8 Alert Tone



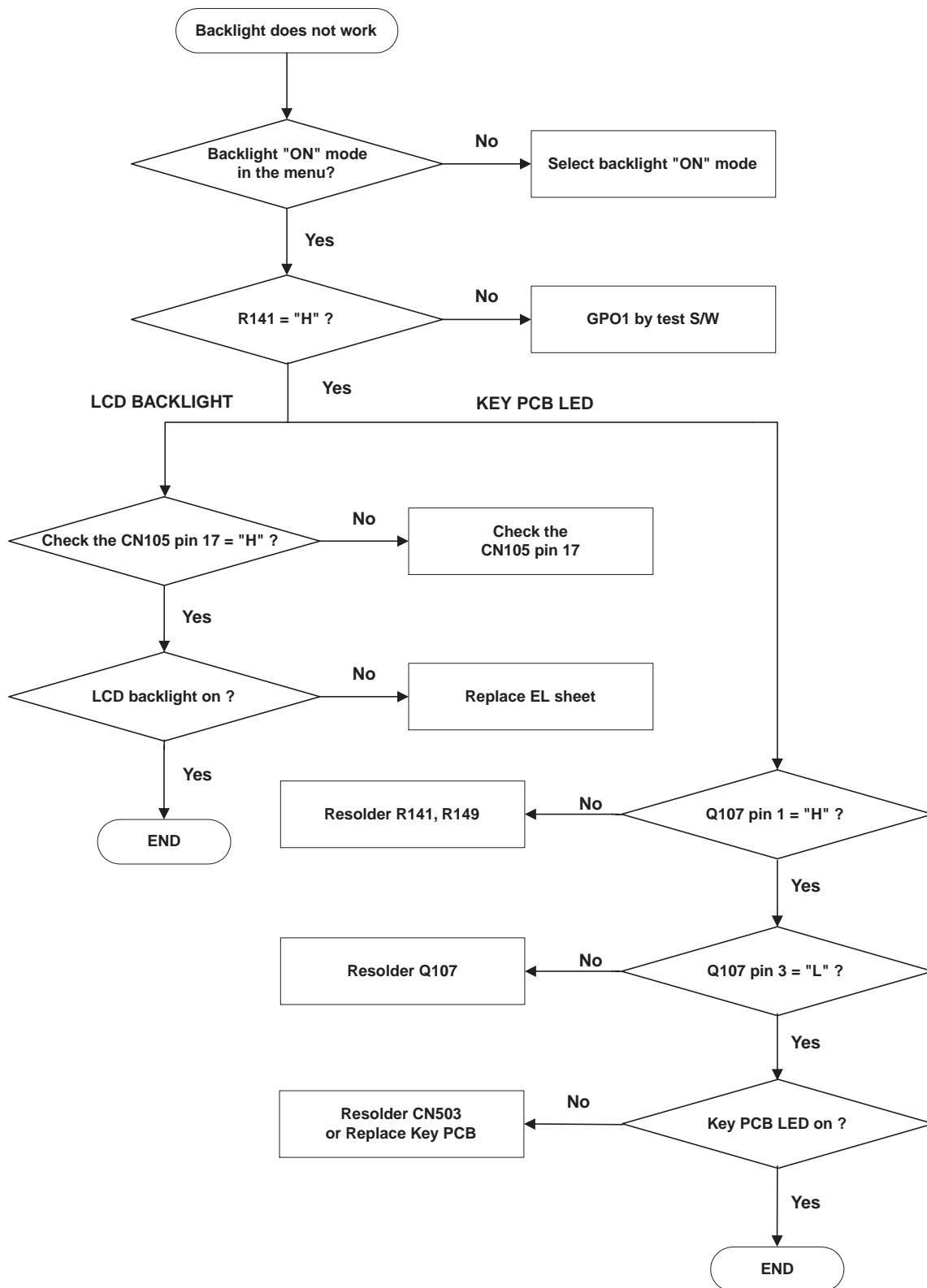


5-9 Ring Indicator

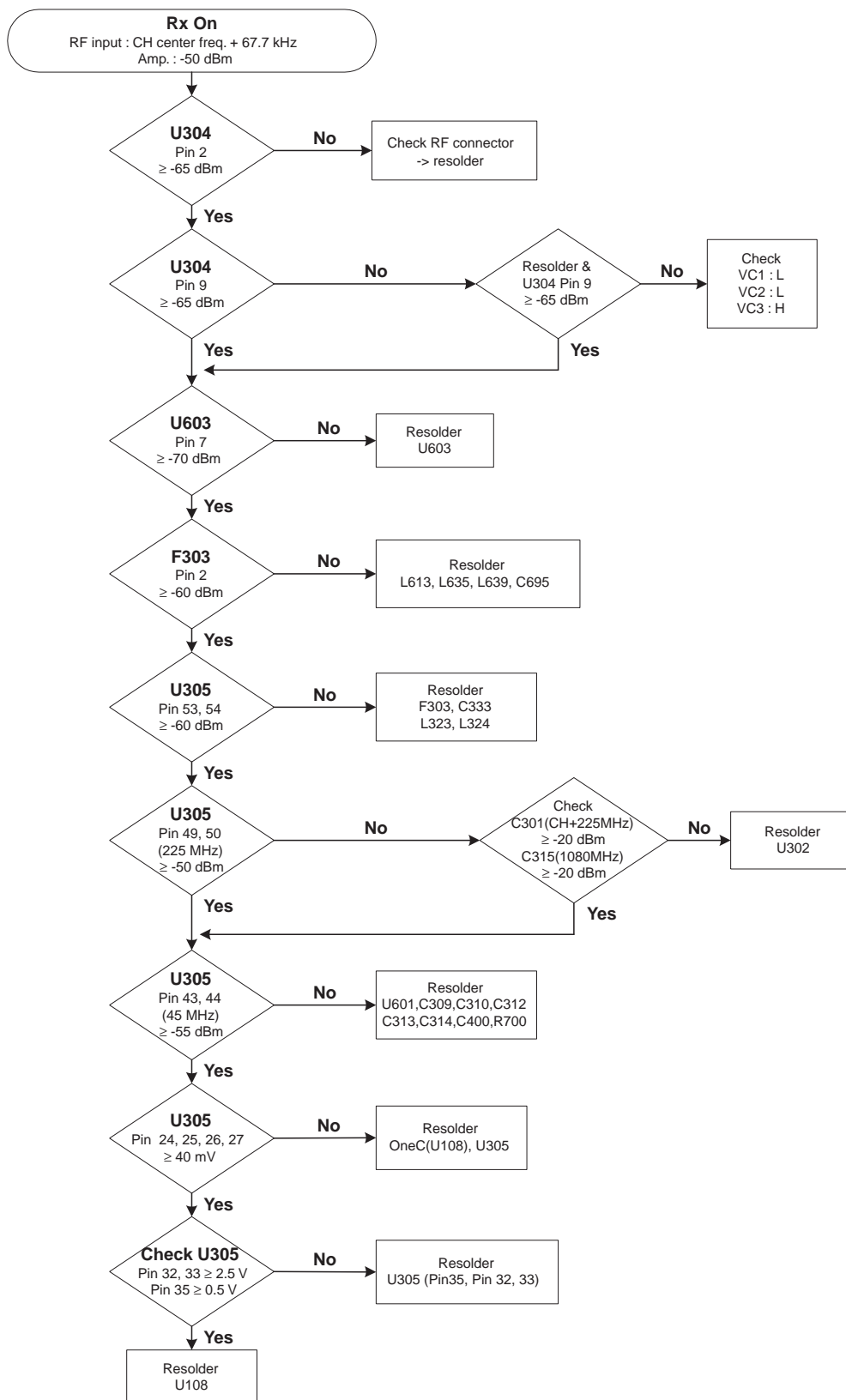




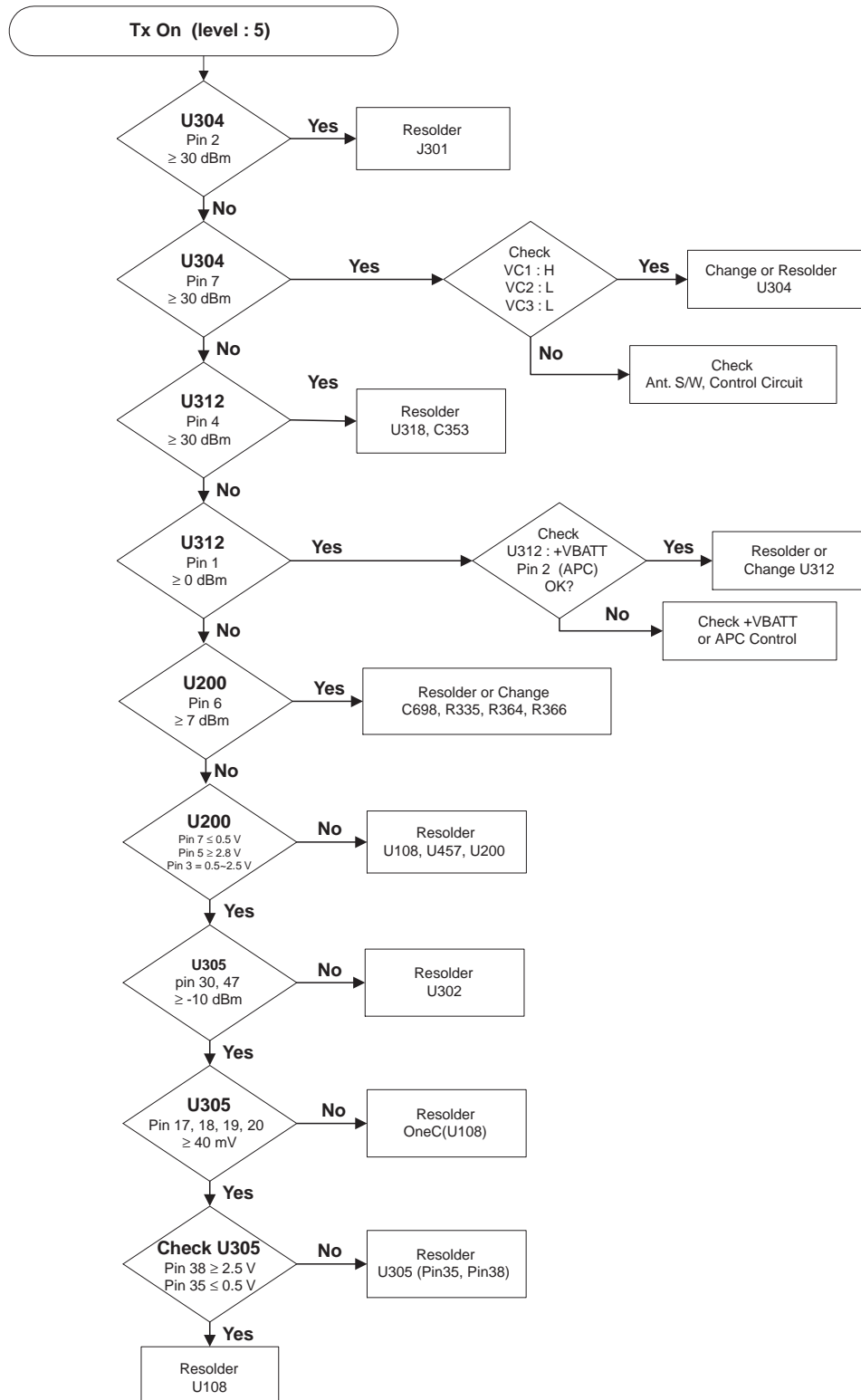
5-10 Back Light



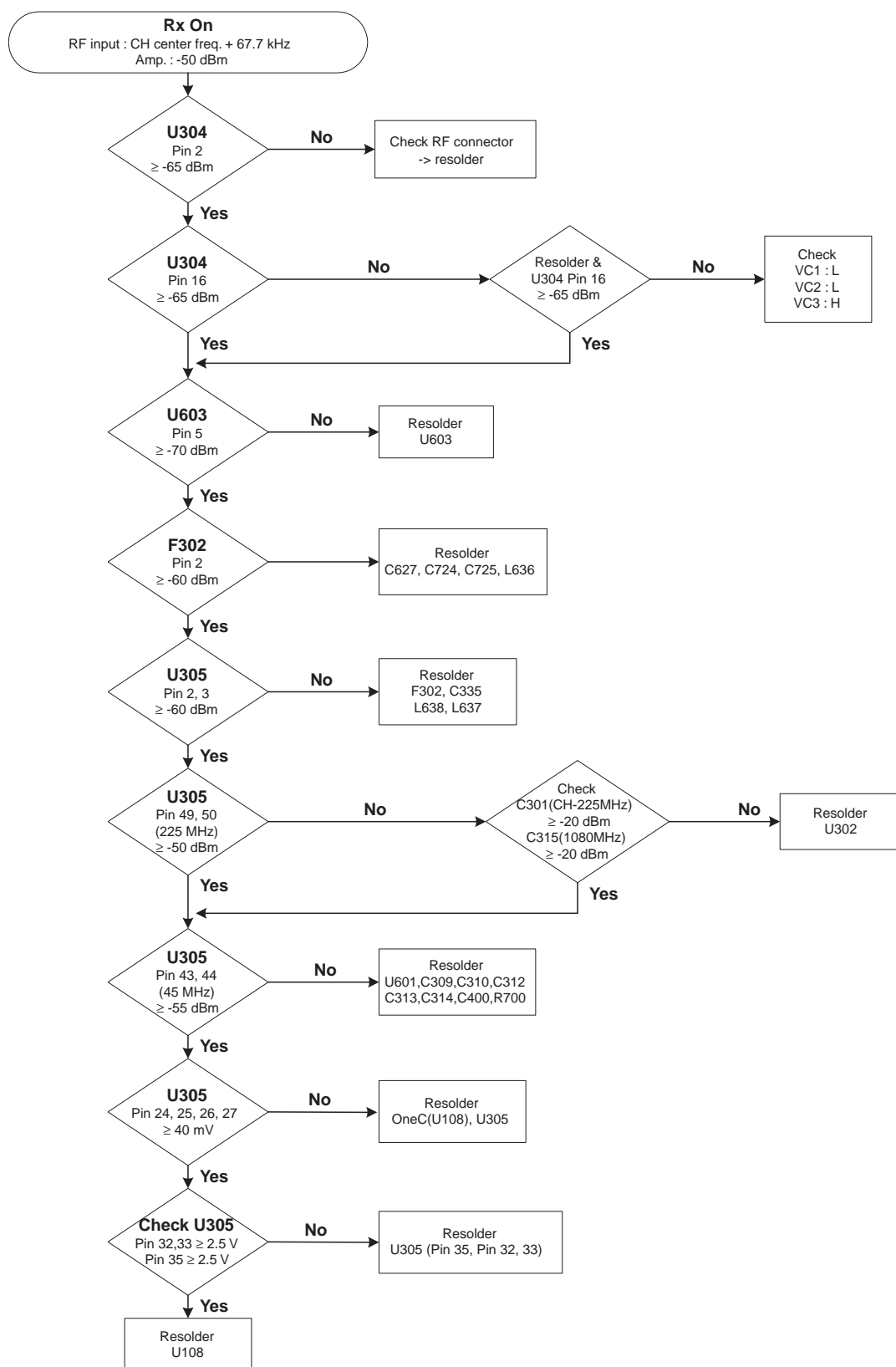
5-11 GSM Receiver



5-12 GSM Transmit



5-13 DCS Receiver



5-14 DCS Transmit

