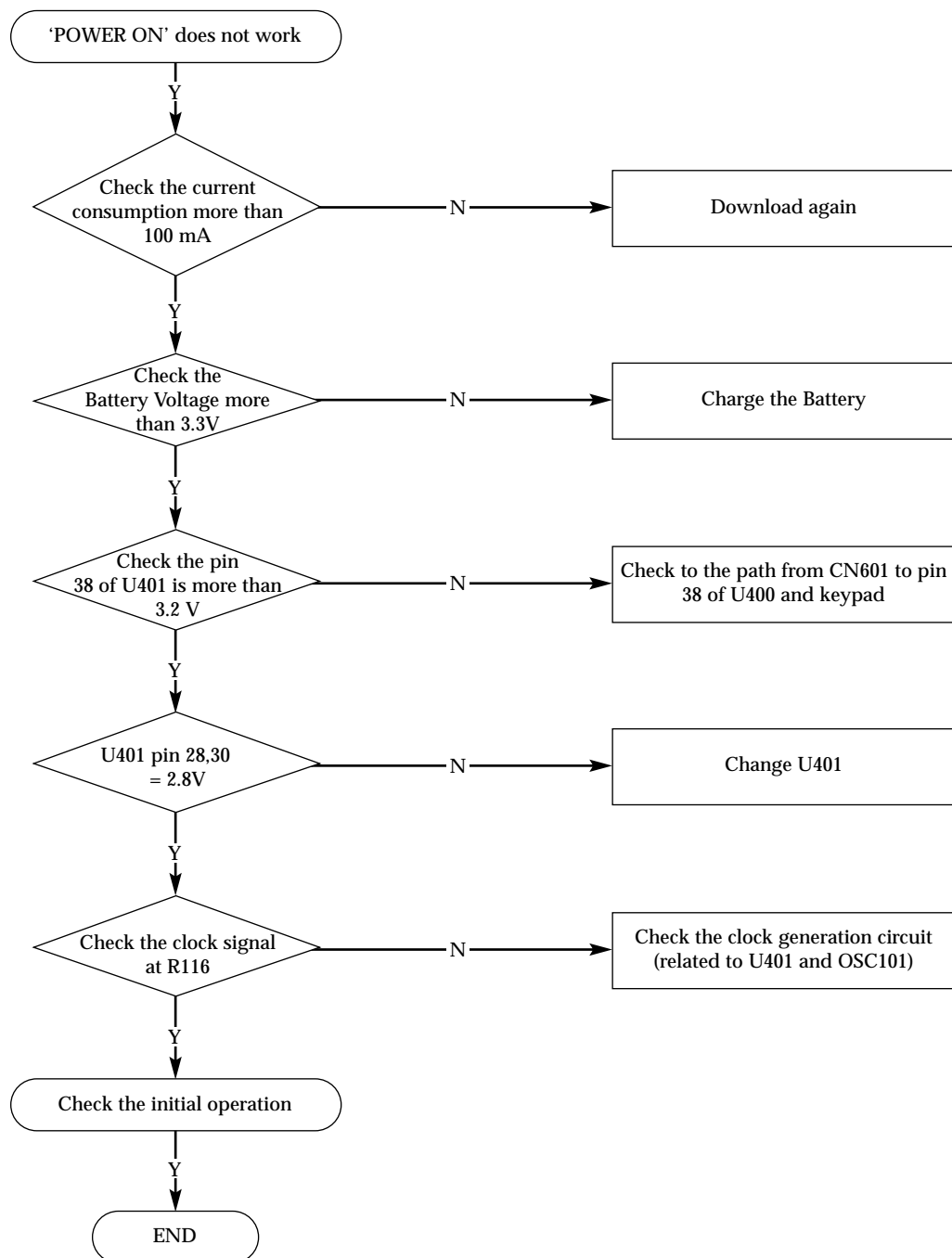


7. Trouble Shooting

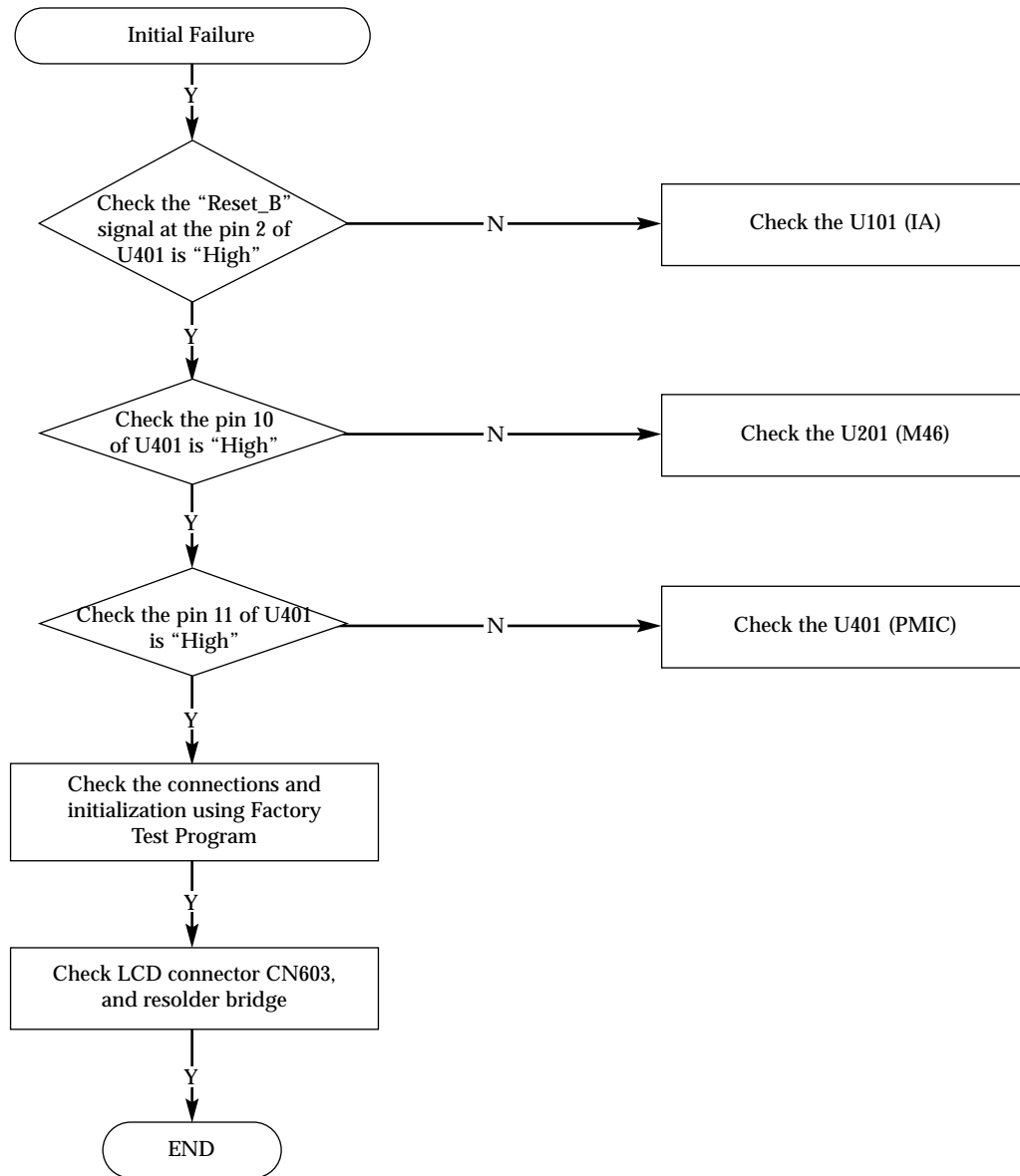
- Power On Failure.
- SIM Recognition Failure.
- Battery Charging Failure.
- Audio Failure (Microphone, Speaker)
- Keypad Failure
- Ring Indicator Failure
- Back Light Failure
- Call Failure (DCS, GSM Rx and Tx part)

7.1 Flow Chart of Troubleshooting

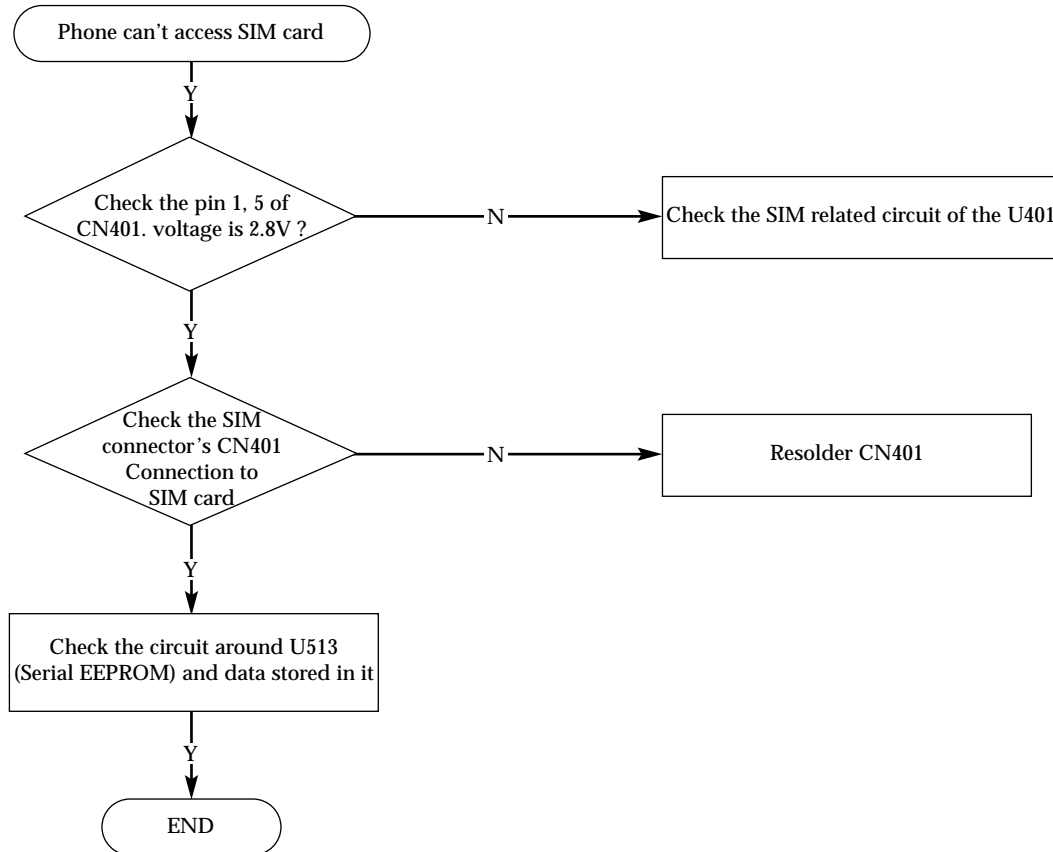
7.1.1 SGH-A100 Power ON



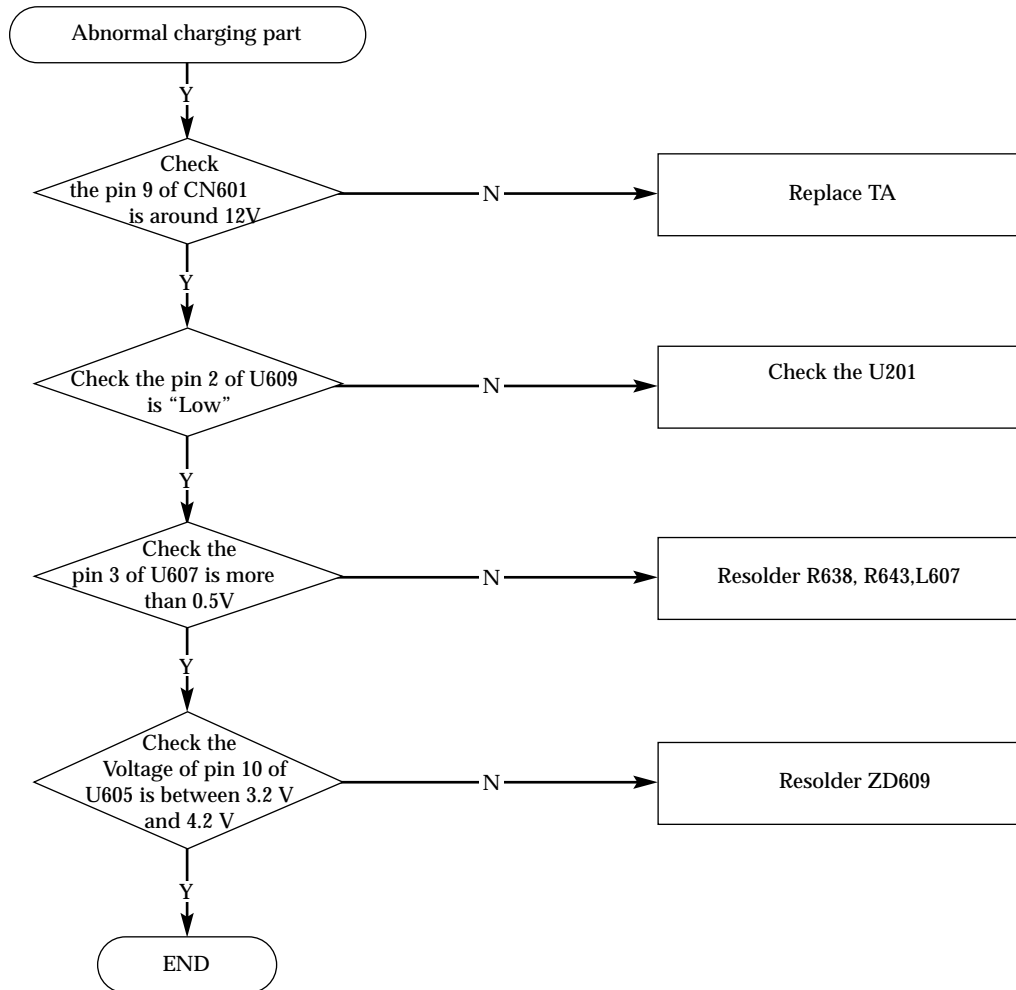
7.1.2 SGH-A100 Initial



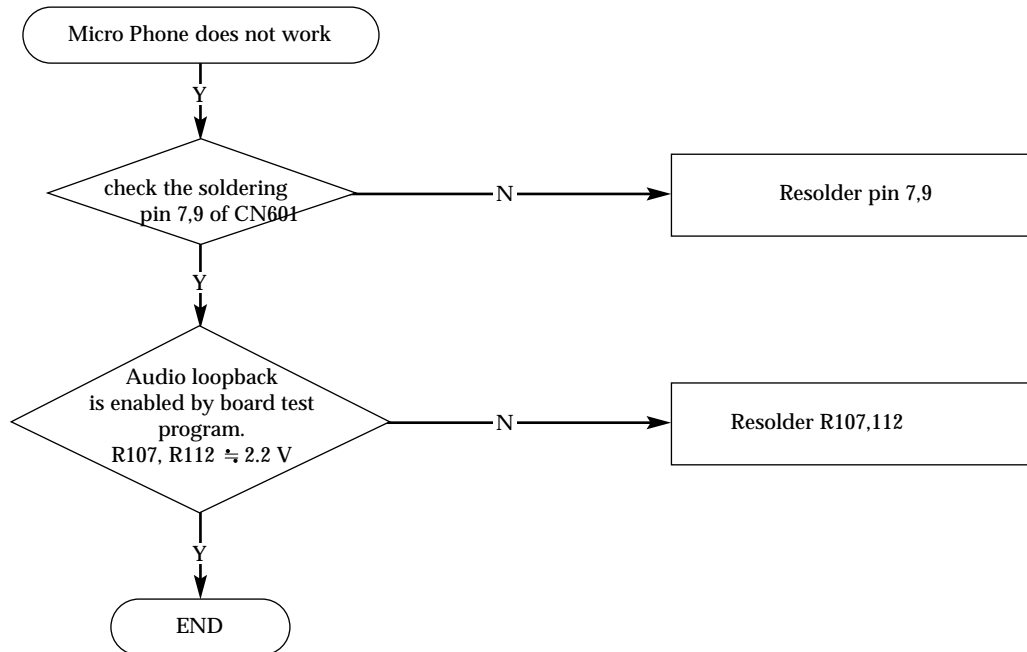
7.1.3 SGH-A100 SIM Part



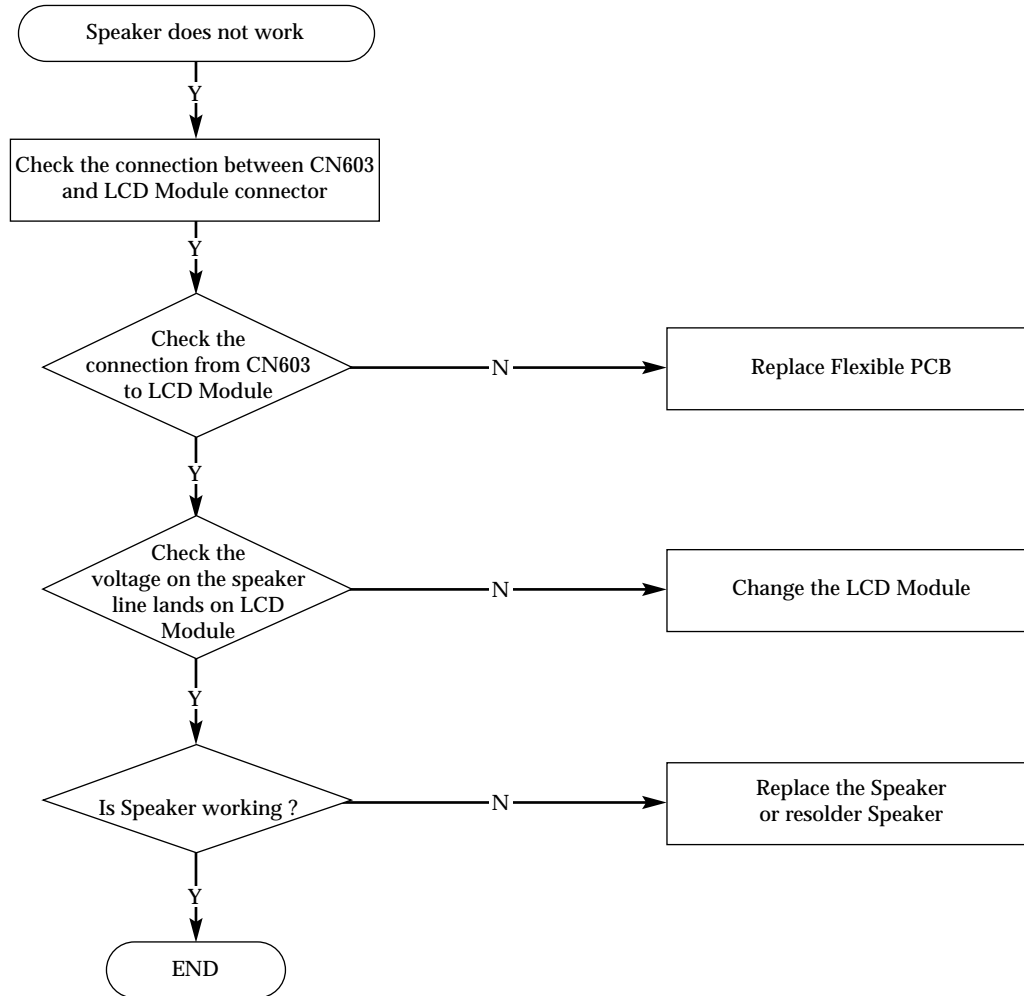
7.1.4 SGH-A100 Charging Part



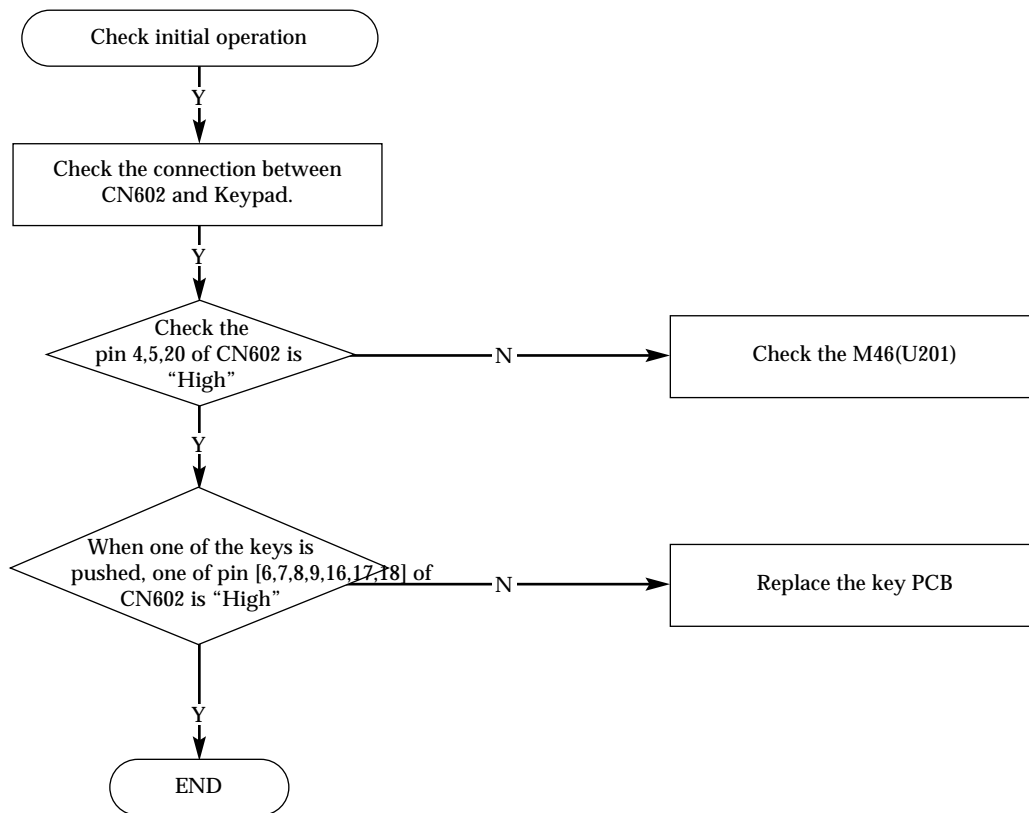
7.1.5 SGH-A100 Microphone Part



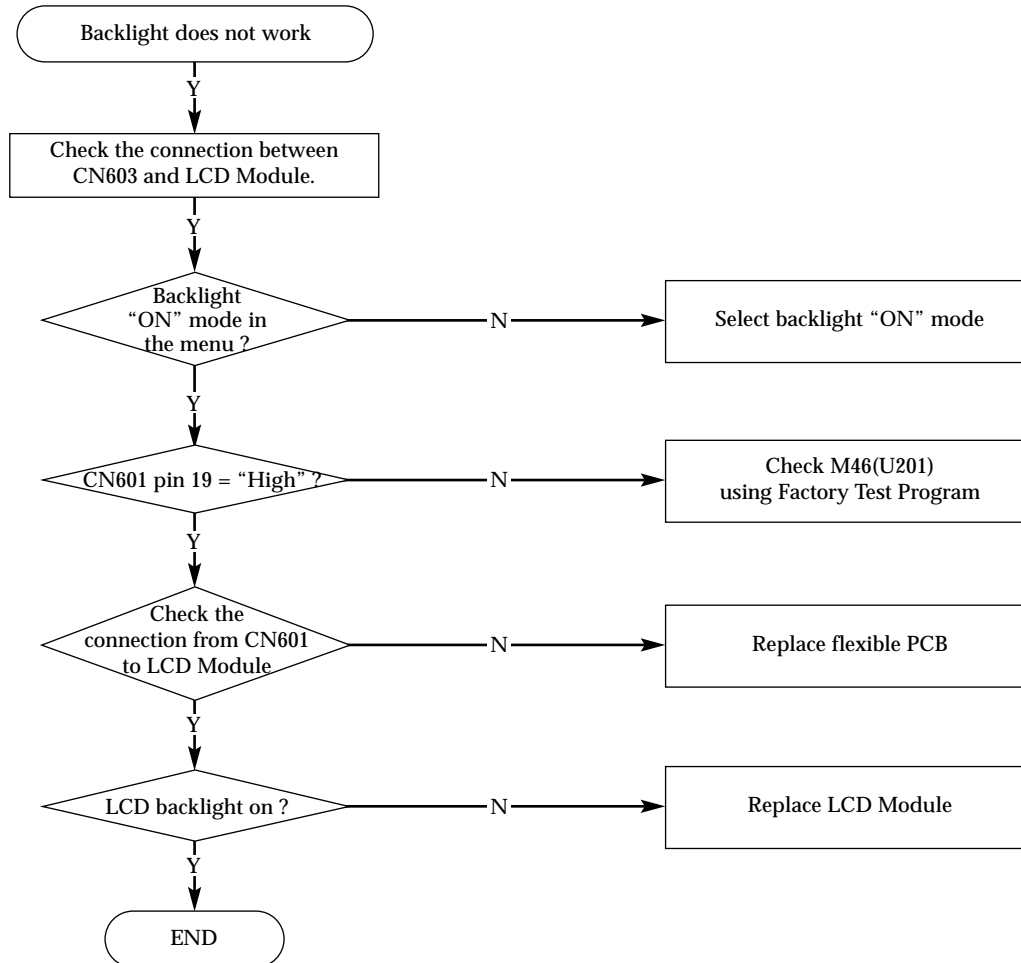
7.1.6 SGH-A100 Speaker Part



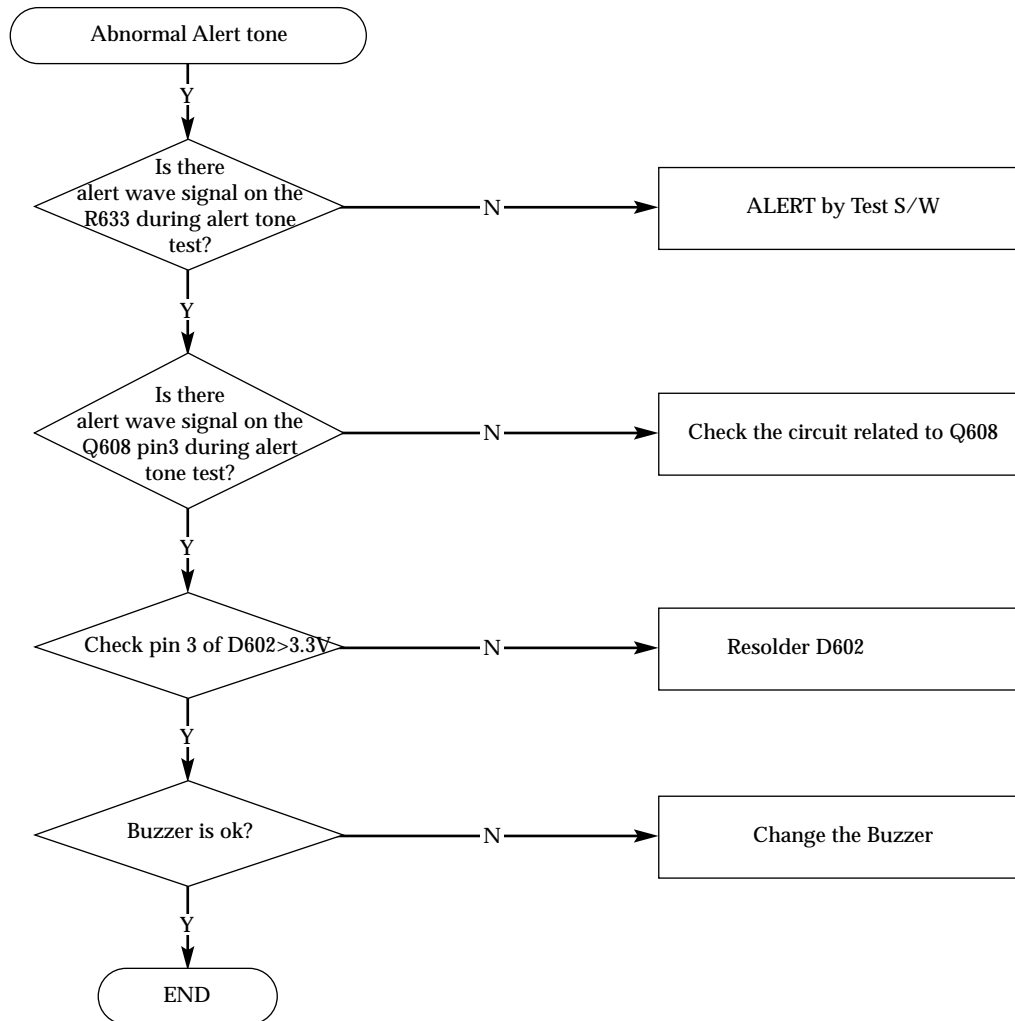
7.1.7 SGH-A100 Key Data Input



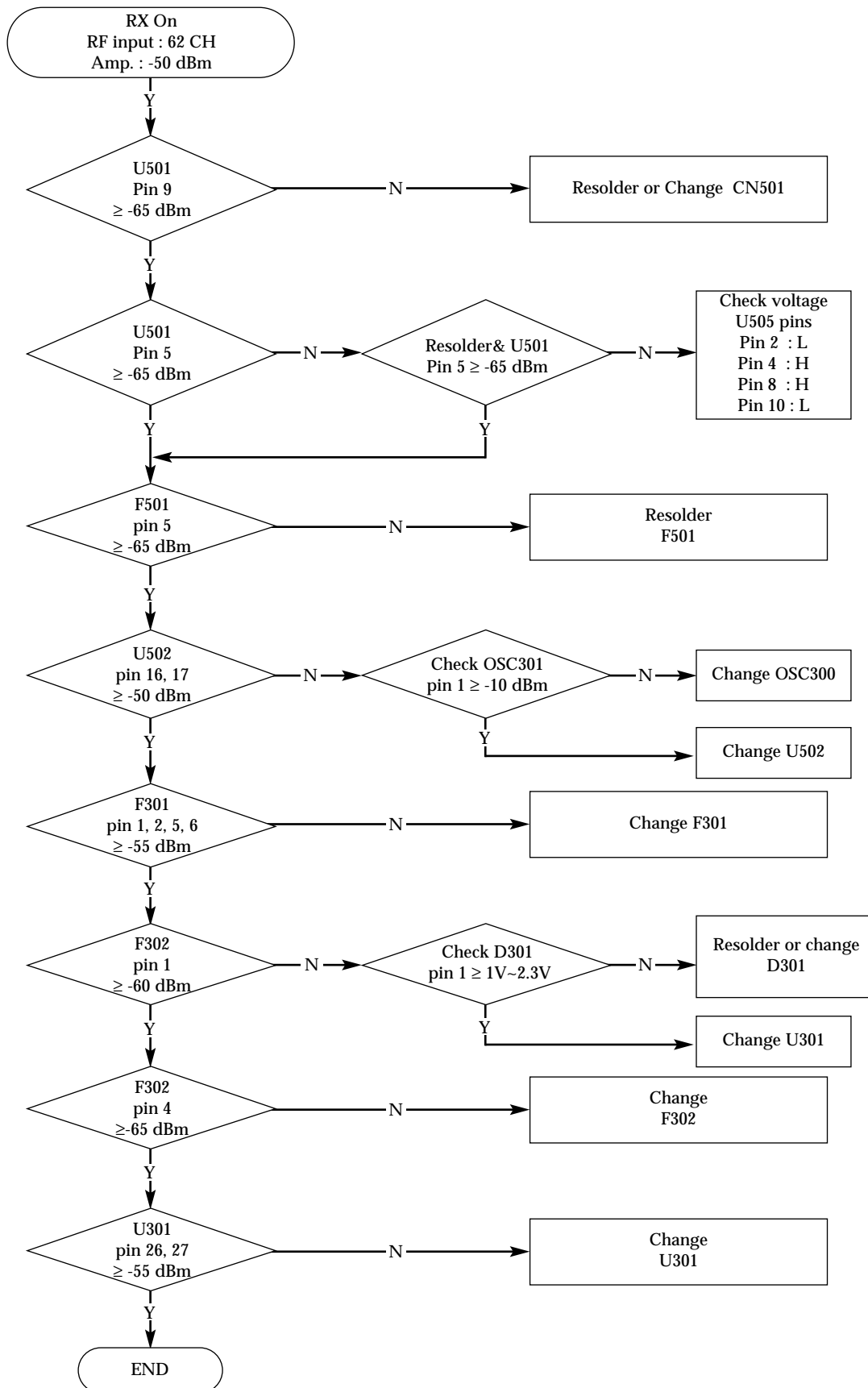
7.1.8 SGH-A100 Back Light



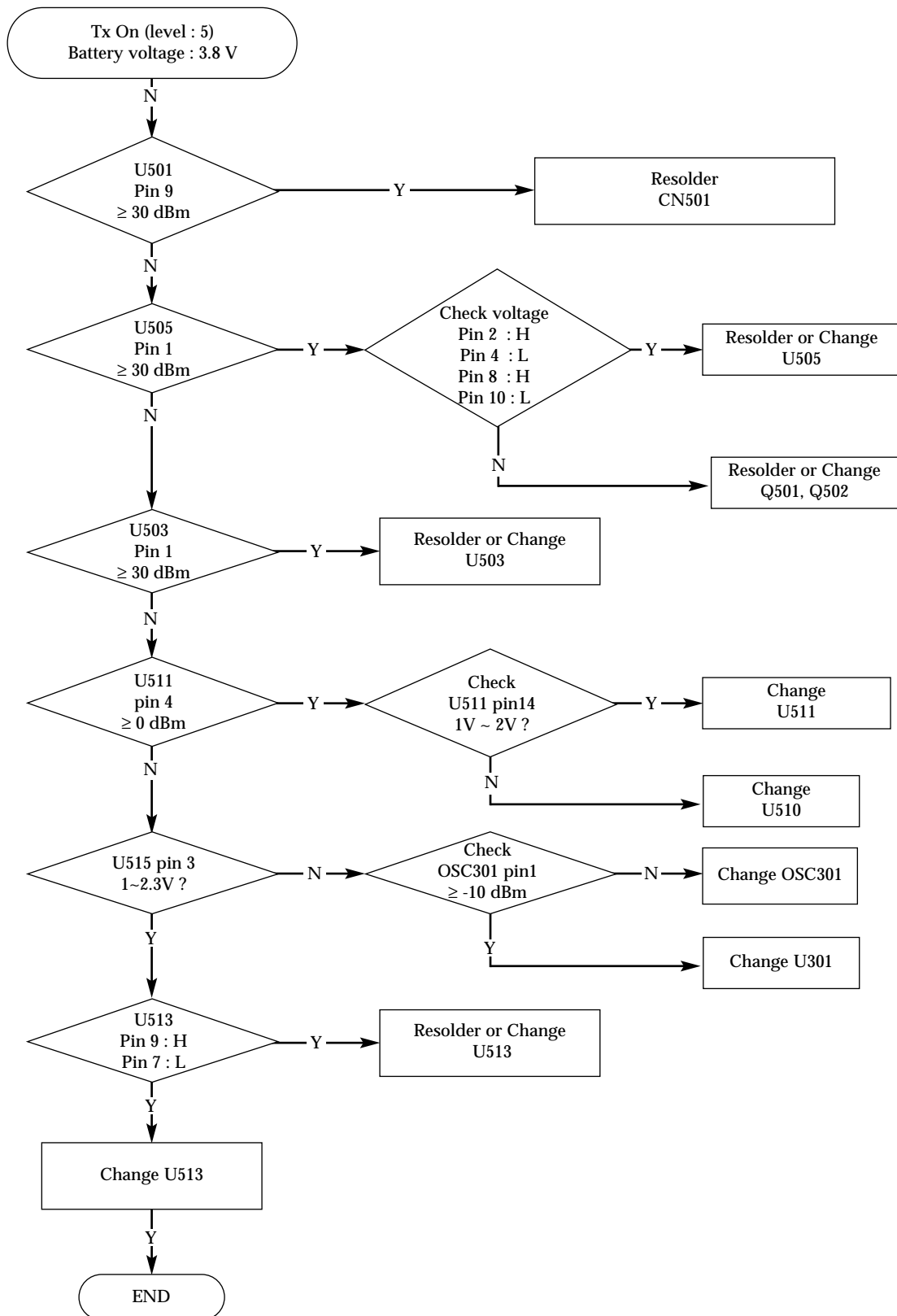
7.1.9 SGH-A100 Alert Tone



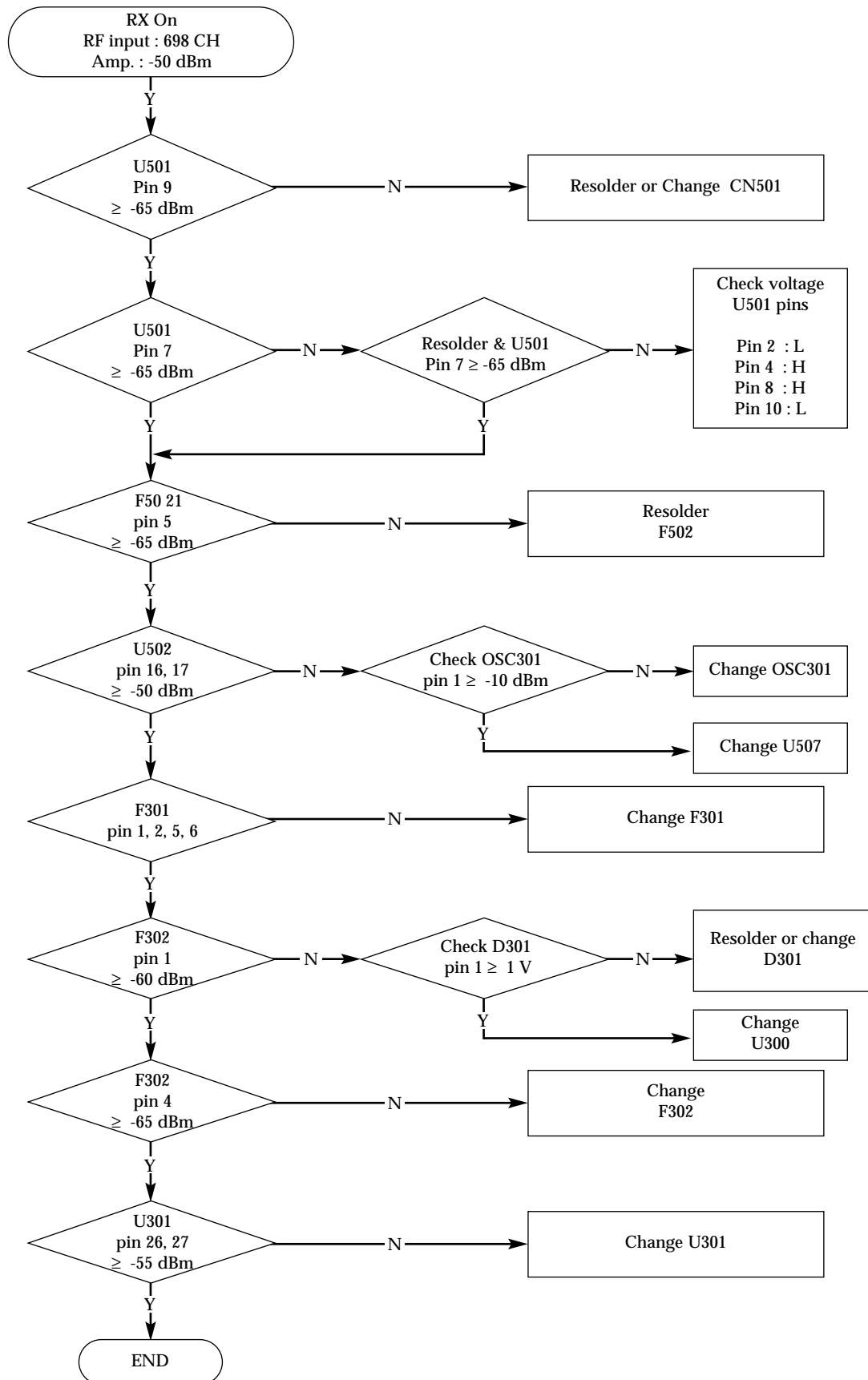
7.1.10 SGH-A100 GSM Receiver



7.1.11 SGH-A100 GSM Transmit



7.1.12 SGH-A100 DCS Receiver



7.1.13 SGH-A100 DCS Transmit

