

Potomac 10A+/AG+

CS BUILD

2008.02.22

	1	2	3	4	5	6	7	8		A
A										
B										
C										
D										
E										
F										
	1	2	3	4	5	6	7	8		

CHANGED BY HEAD 22-Feb-2008

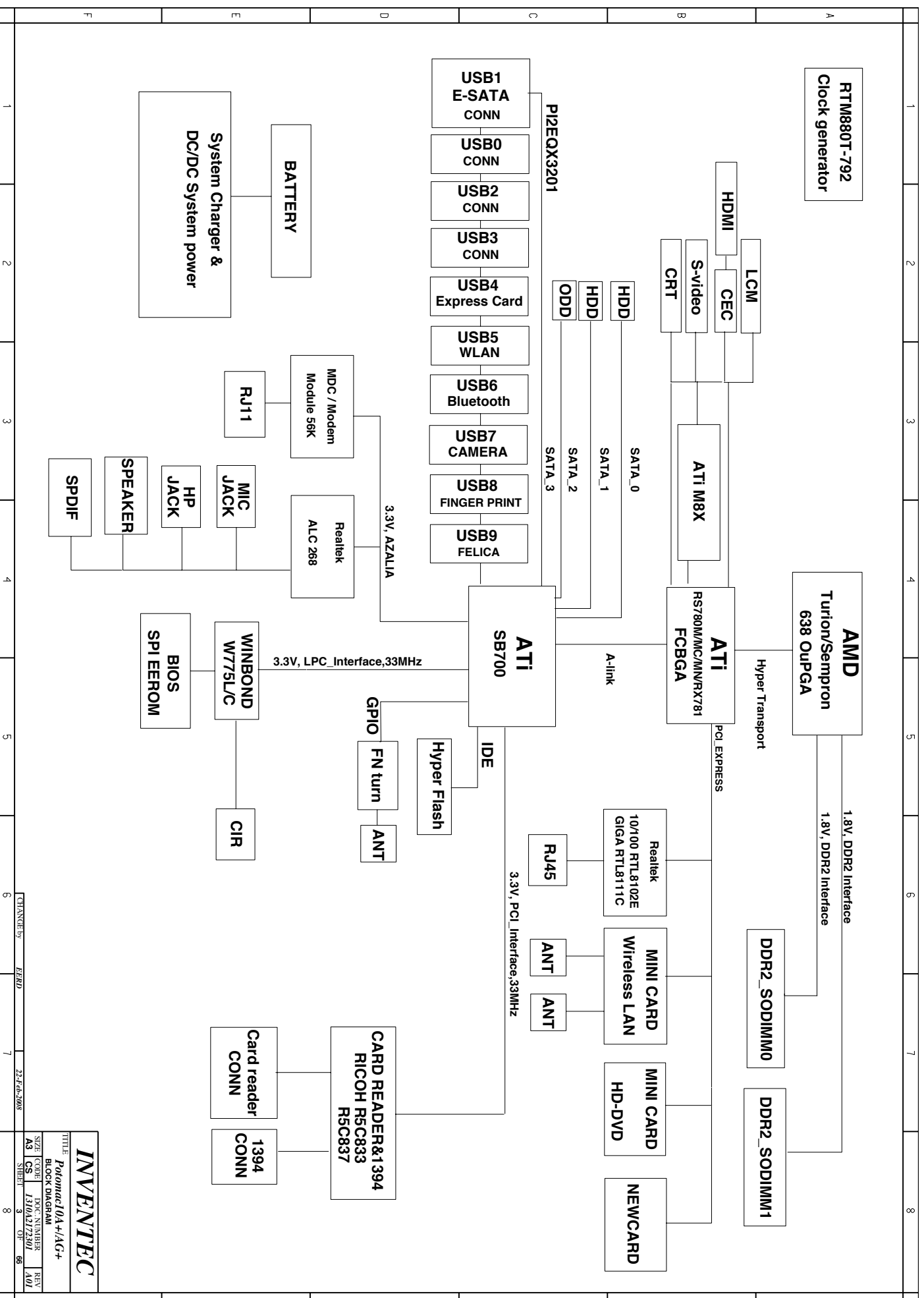
INVENTEC			
Potomac10A+/AG+			
SIZE	CODE	DOC. NUMBER	REV
A3	CS	1310A172501	A01
SHEET	1	OF	66

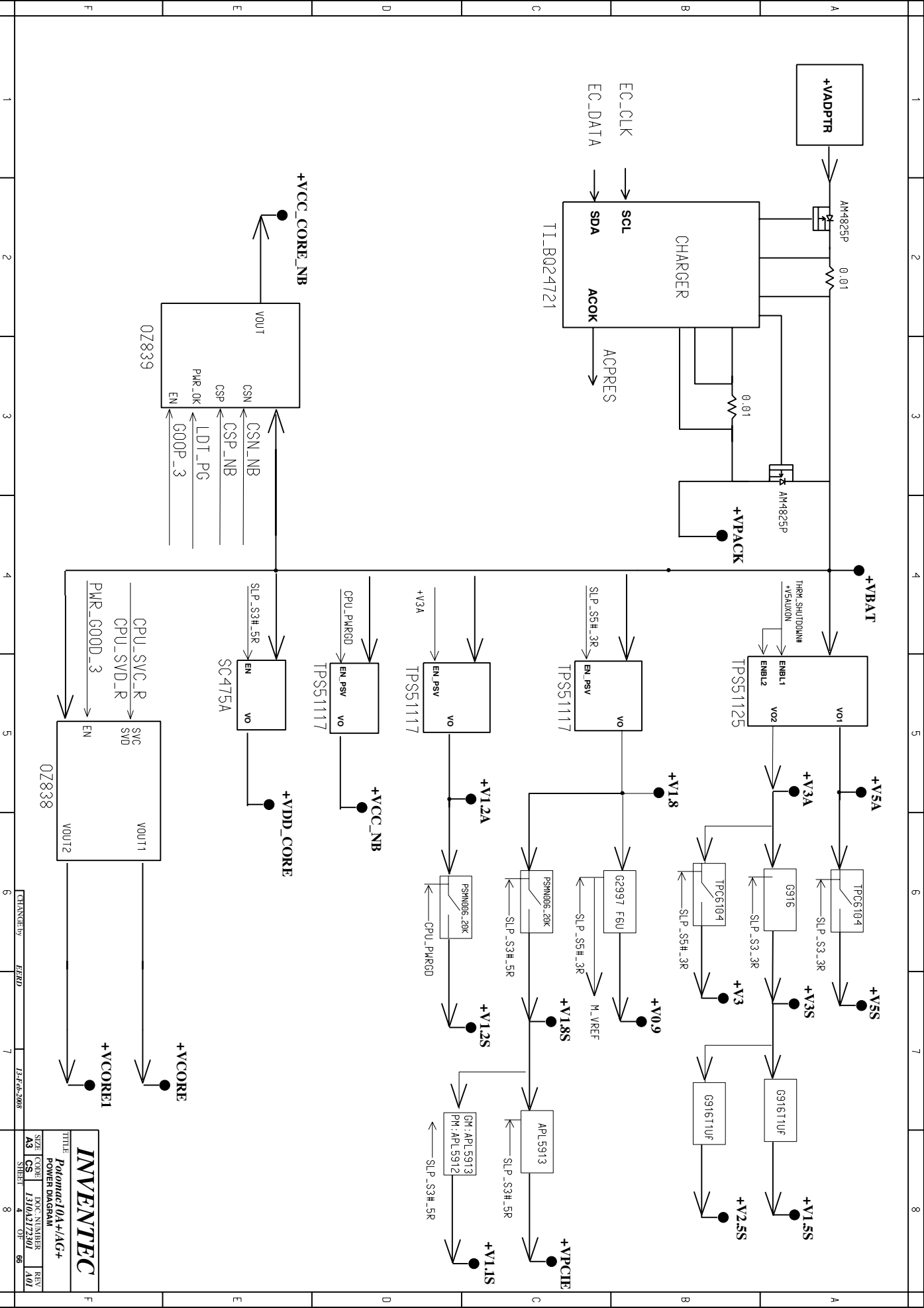
TABLE OF CONTENTS

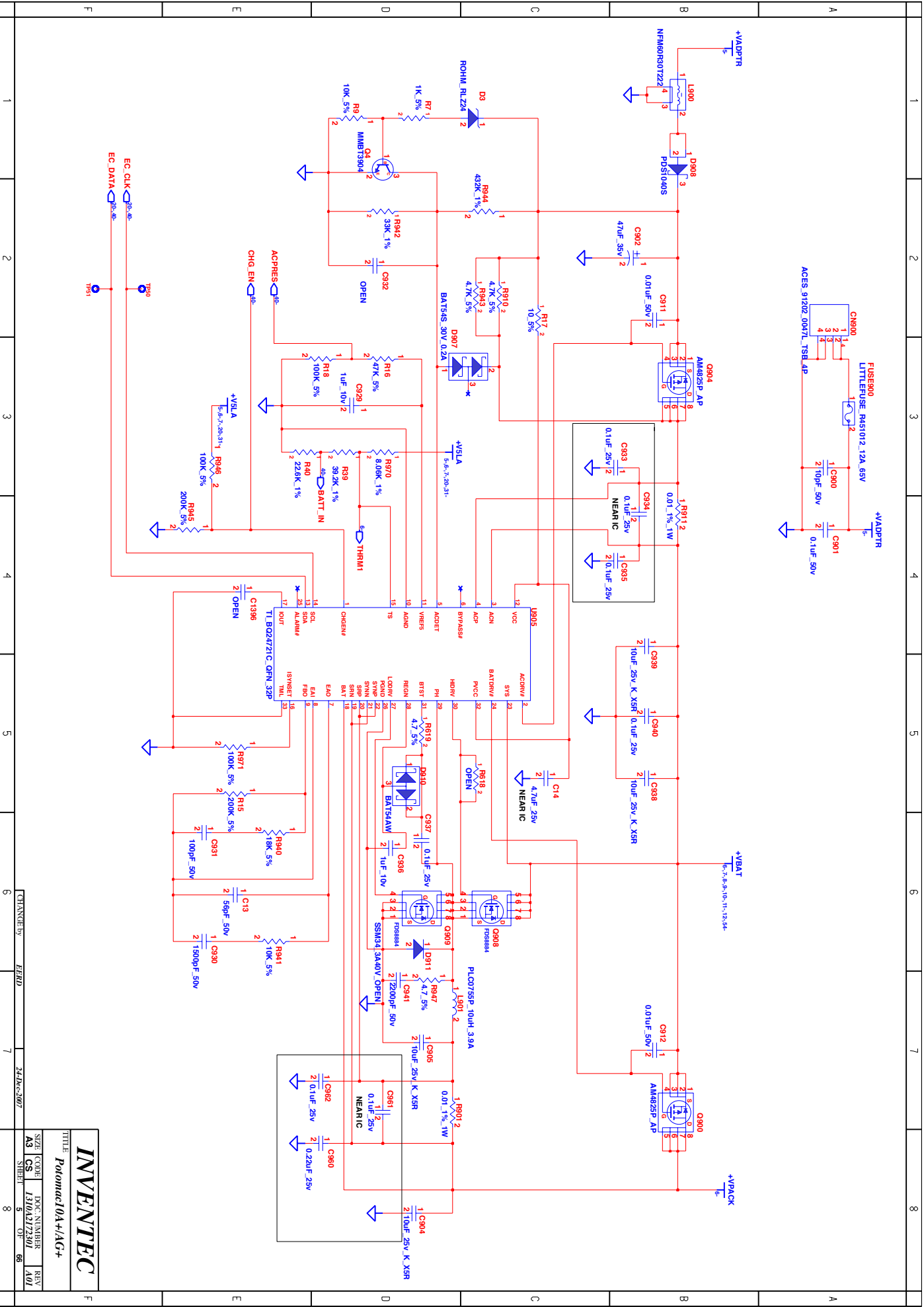
PAGE		PAGE	
1.	COVER PAGE	37.	USB CONN & E-SATA
2.	INDEX	38.	FINGERPRINT & CAMERA & FELICA CONN
3.	BLOCK DIAGRAM	39.	BLUE TOOTH
4.	POWER SEQUENCE BLOCK	40.	SUPER I/O(KBC)
5-14	SYSTEM POWER	41.	K/B & TP/B CONN
15.	CLOCK GENERATOR	42.	AUDIO CODEC
16.	CPU 1	43.	AUDIO AMP
17.	CPU 2	44.	SPDIF & MIC & HP
18.	CPU 3	45.	LAN
19.	CPU 4	46.	RJ45 & TRANSFORMER
20.	FAN & THERMAL CONTROLLER	47.	HYPER FLASH CONNECTOR
21.	N/B 1	48.	MEM CARD & 1394 CONTROLLER
22.	N/B 2	49.	MEM CARD READER & 1394 CONN
23.	N/B 3	50.	EXPRESS CARD CONN
24.	N/B 4	51.	WLAN & HD-DVD
25.	DDR2 DIMM0	52.	MDC
26.	DDR2 DIMM1	53.	LED
27.	DDR DAMPING	54.	FOR EMI AND TOUCH PAD BOARD
28.	RGB CONN	55.	KILL SW & LED SW & SCREW
29.	S-VIDEO CONN & CEC	56.	GPU-1
30.	LCM	57.	GPU-2
31.	HDMI CONN	58.	GPU-3
32.	S/B 1	59.	GPU-4
33.	S/B 2	60.	GPU-5
34.	S/B 3	61.	VRAM_DDR2-1
35.	S/B 4	62.	VRAM_DDR2-2
36.	SATA HDD & ODD	63.	VRAM_DDR2-3
		64.	VRAM_DDR2-4

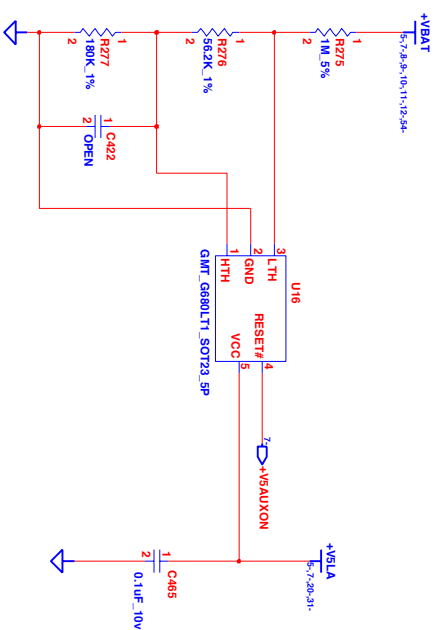
CHANGE by	<i>FERD</i>	24-Dec-2007
-----------	-------------	-------------

<i>INVENTEC</i>			
TITLE			
<i>Potomac10A+/AG+</i>			
INDEX			
SIZE	DOC. NUMBER	REV	
A3	1310A172301	A01	
SHEET	2	OF	66

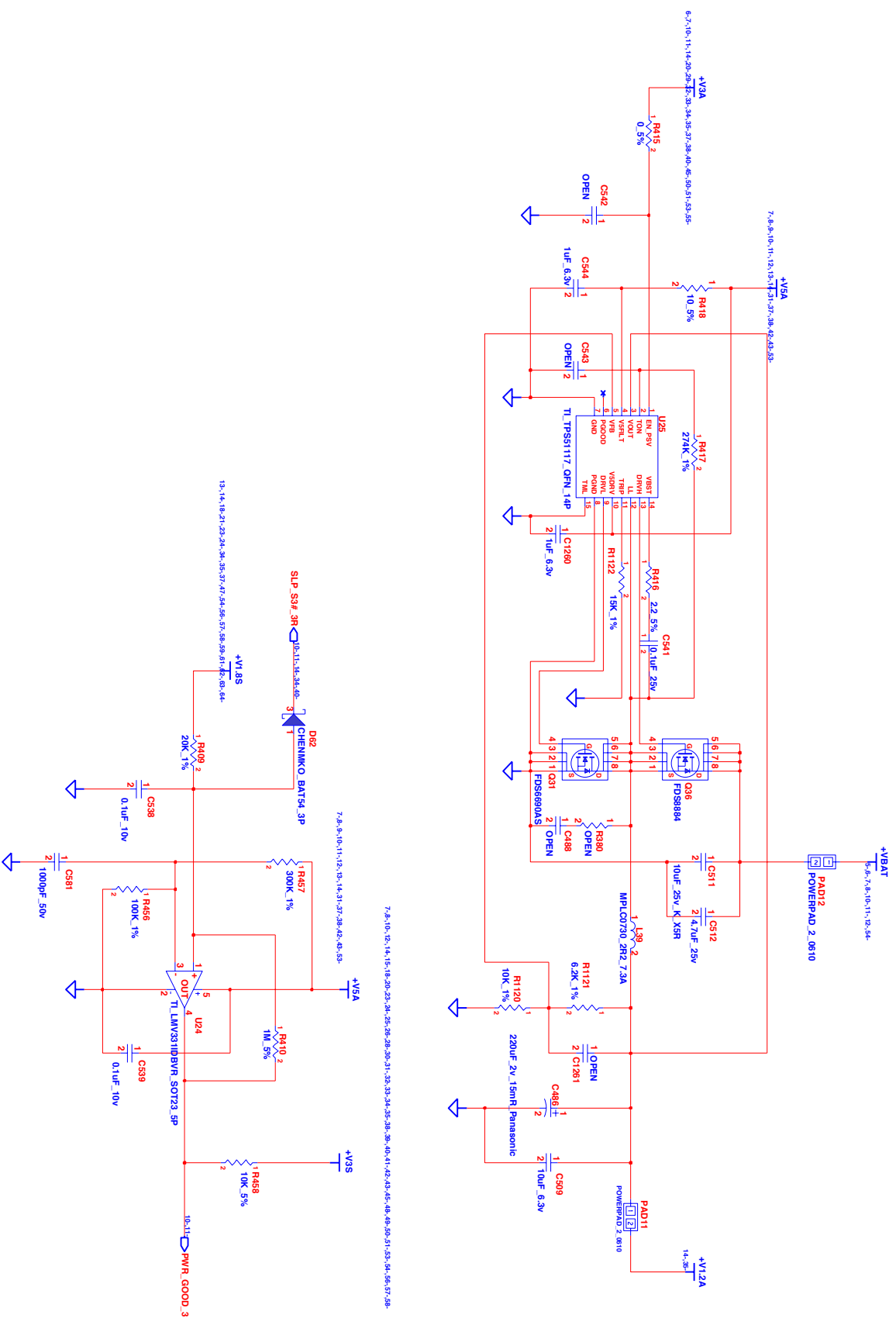




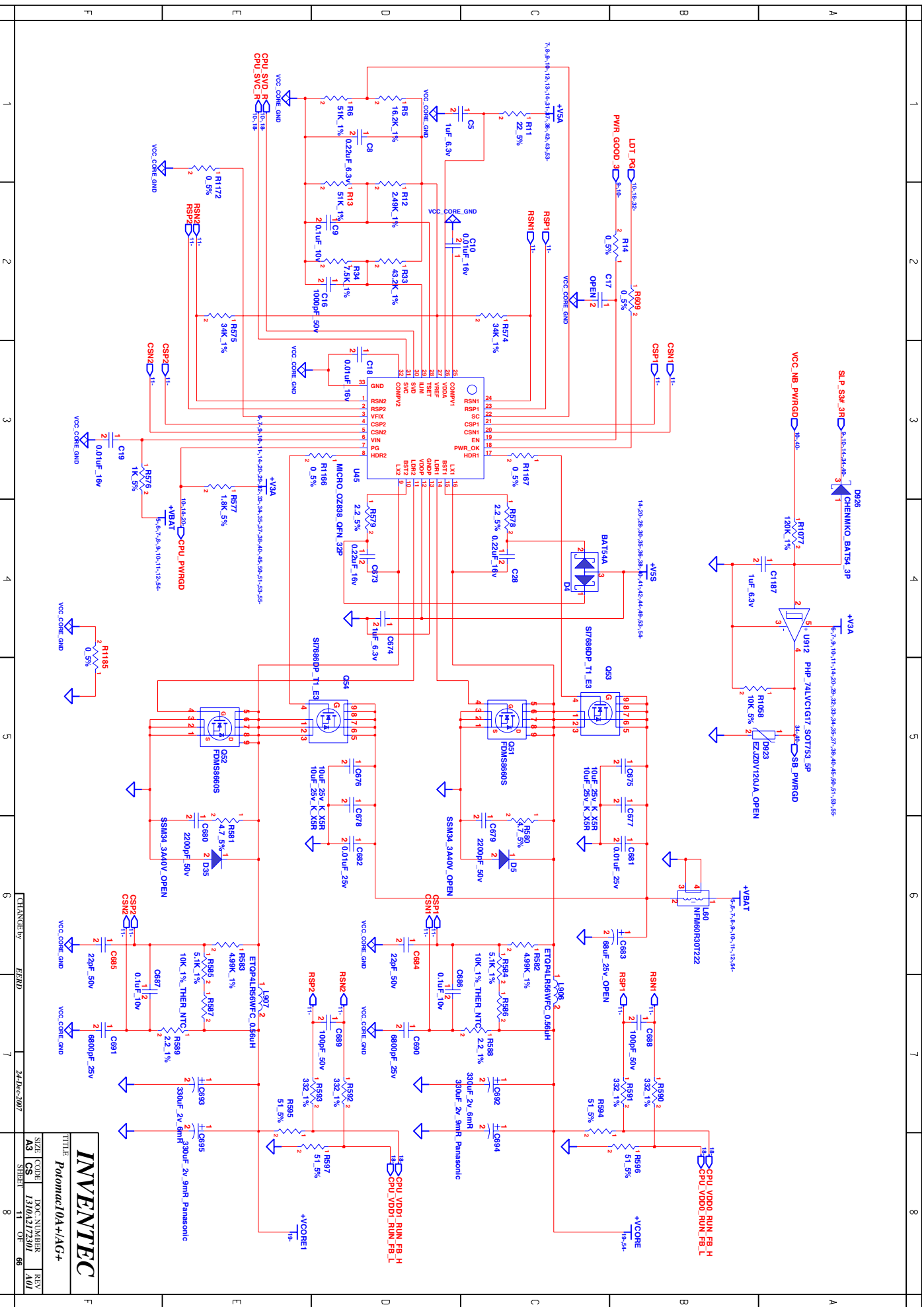




<i>INVENTEC</i>			
TITLE			
<i>Potomac10A+/AG+</i>			
SIZE	CODE	DOC. NUMBER	REV
A3	CS	I/310A2172301	A01
SHEET		6	OF 66
8			

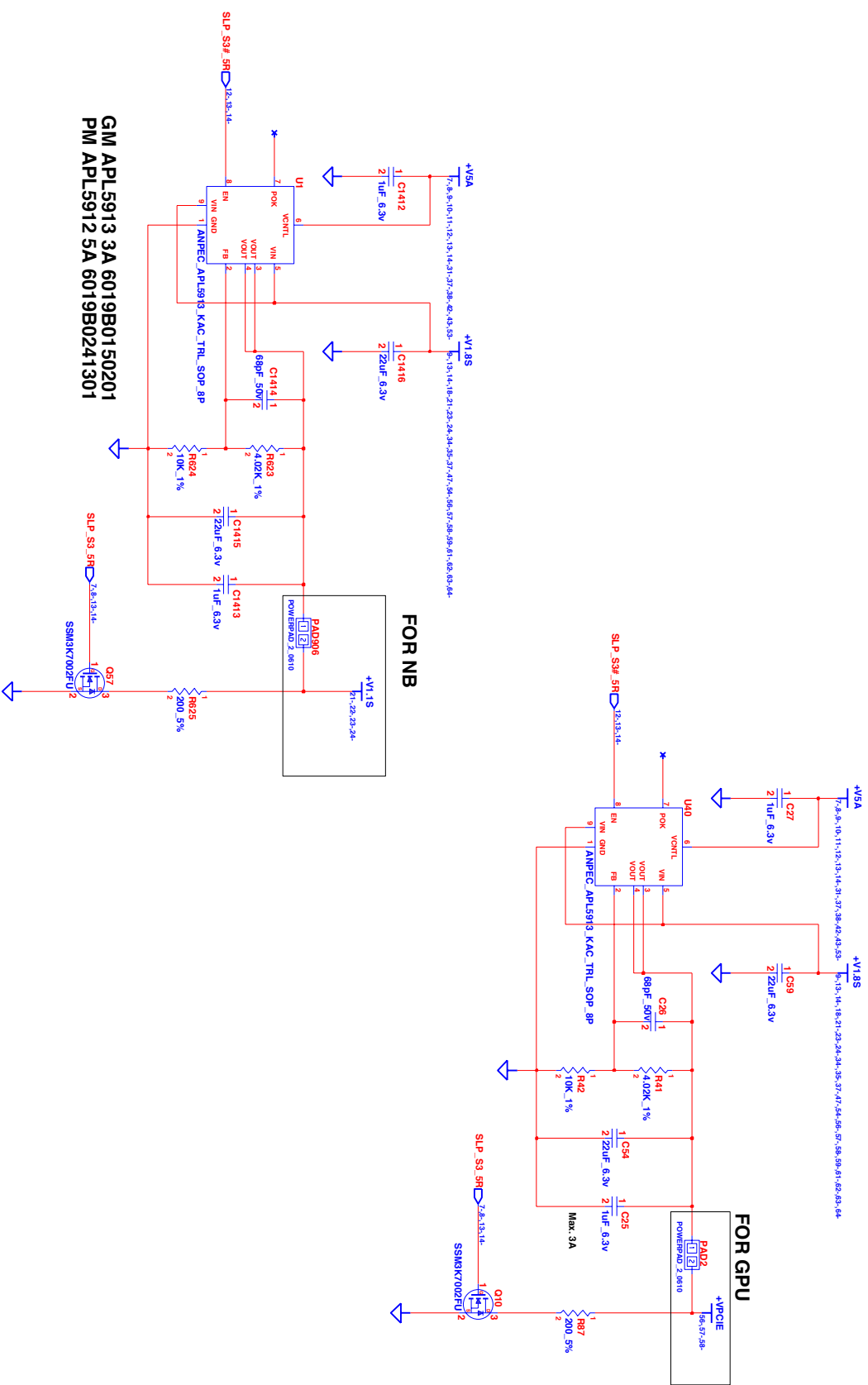


<h1 style="text-align: center;">INVENTEC</h1>			
<p style="text-align: center;">TITLE <i>Potomac10A+/AG+</i></p>			
SIZE A3	CODE CS	IDOC NUMBER <i>I310A2172301</i>	REV A01
SHEET 9		OF 66	
8			





					POWERPLAY
M86	M82XT	M76	M72		
1.1V	1.2V	1.1V	0.95V		LOW
0.9V	0.9V	0.9V	0.9V		HIGH

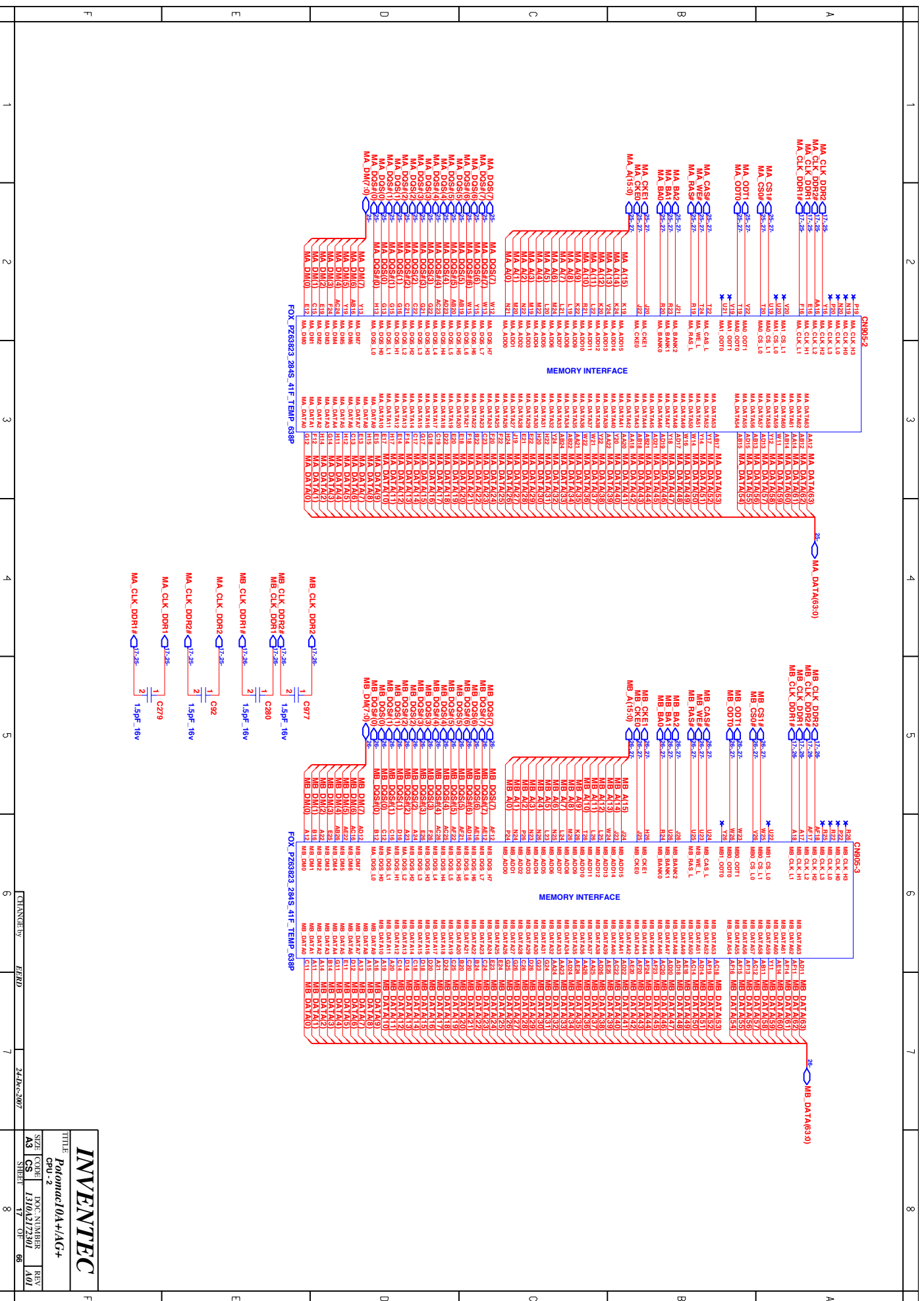


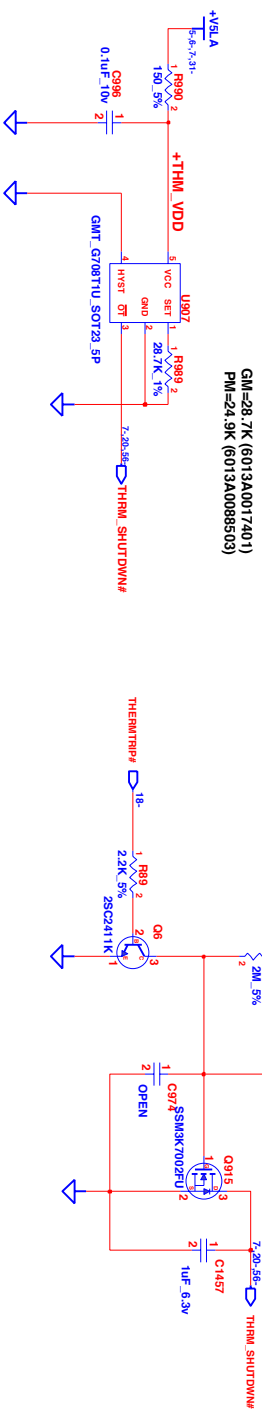
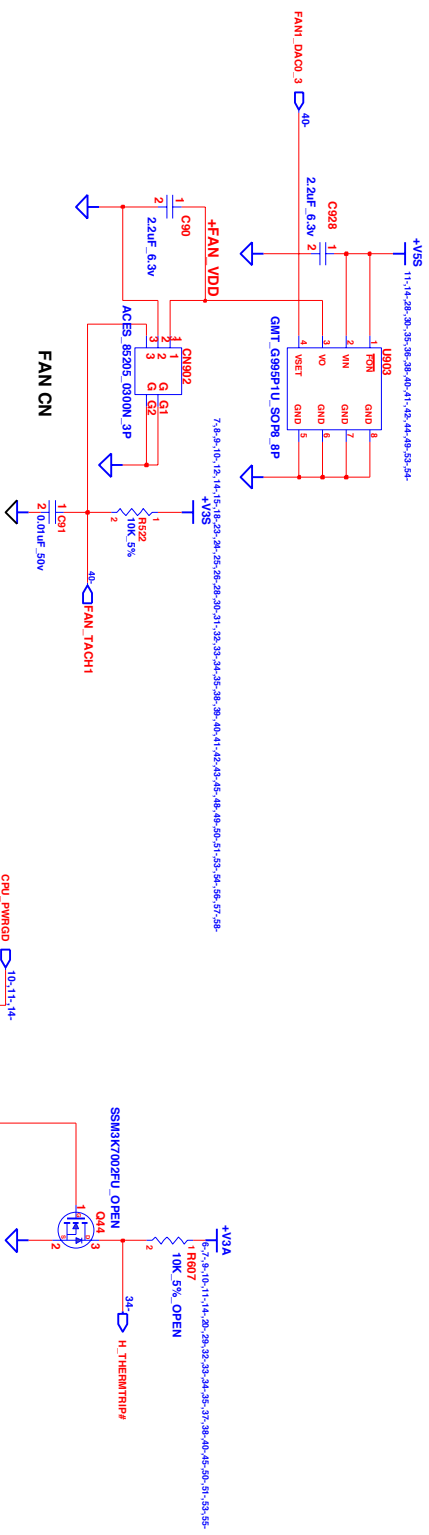
INVENTEC

Potomac 10A+/AG+

SIZE CODE DOC NUMBER REV
A3 CS 1310A172501 401

CHANGED BY HEAD 7 11-F-06-2008

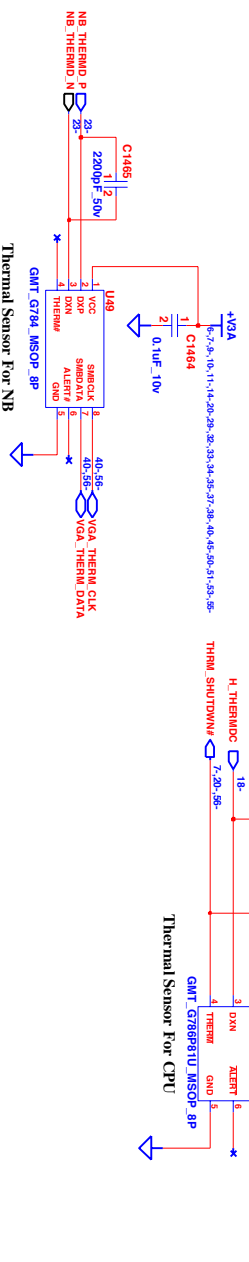




**GM Thermal shutdown at 80.8°C +/-3°C from 60°C to 100°C
PM Thermal shutdown at 86°C +/-3°C from 60°C to 100°C**

$$\text{RSET}=0.0012\text{*T}^2-0.9308\text{*T}+96.147$$

Hysteresis is 30C

[illegible]

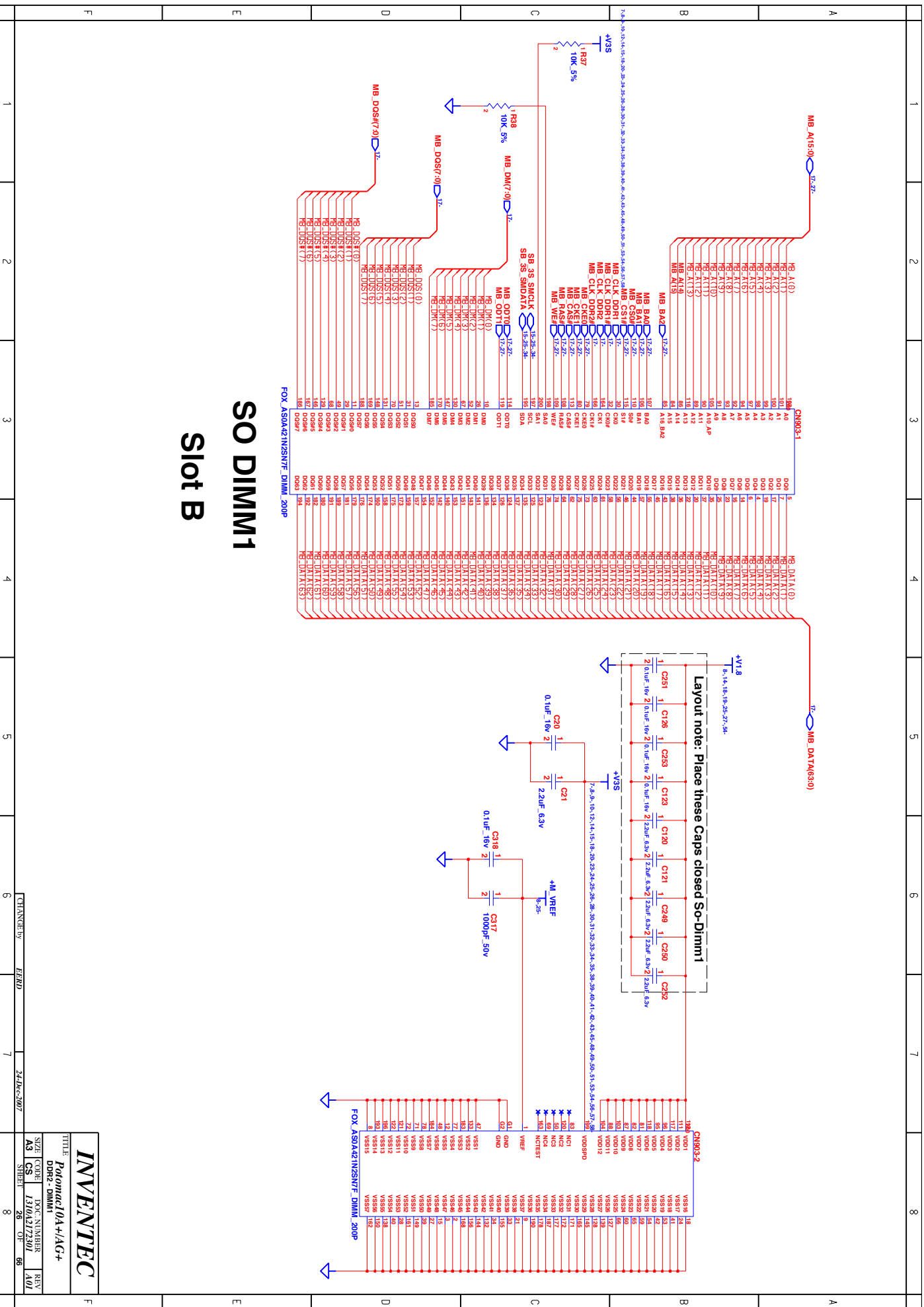
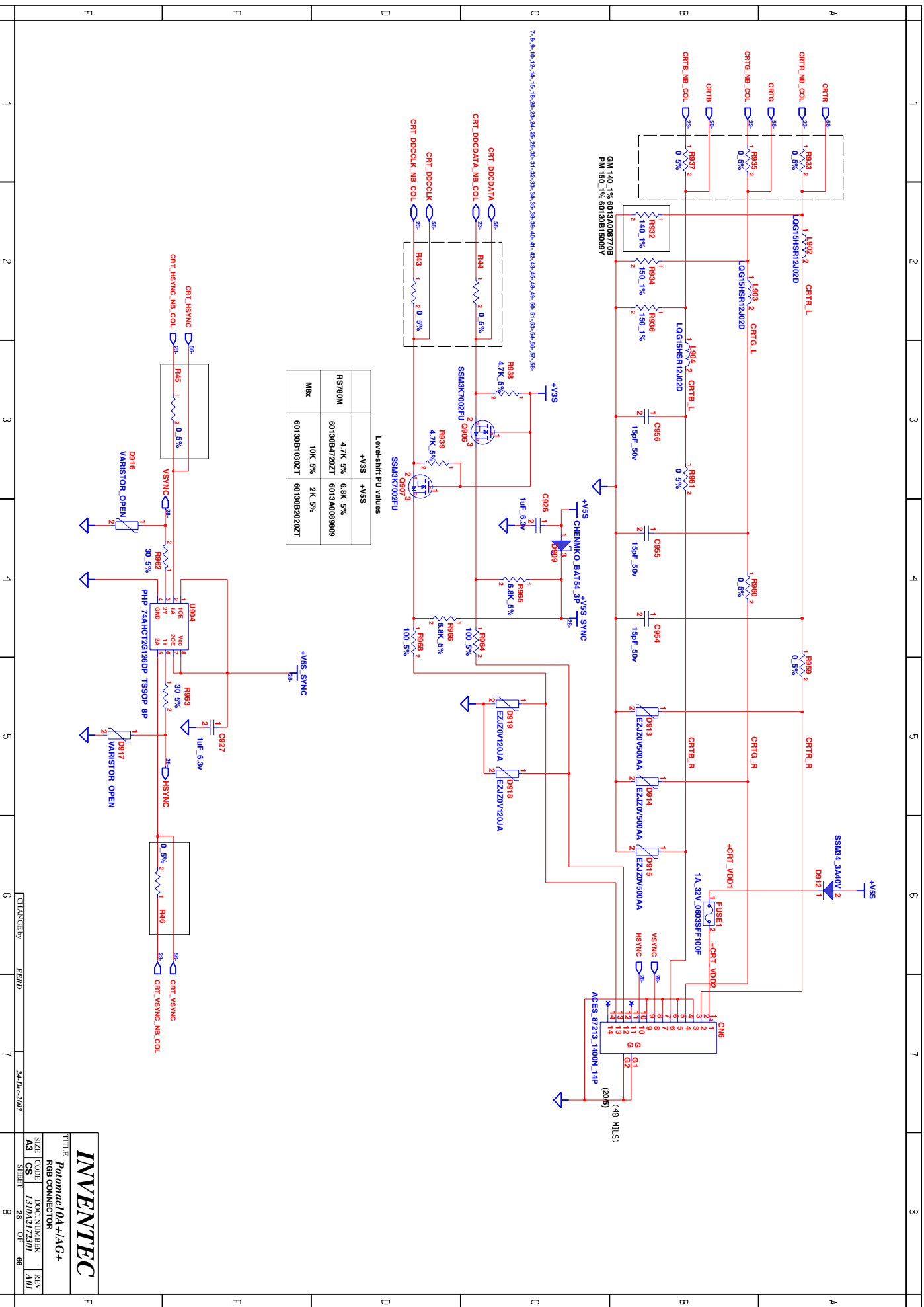
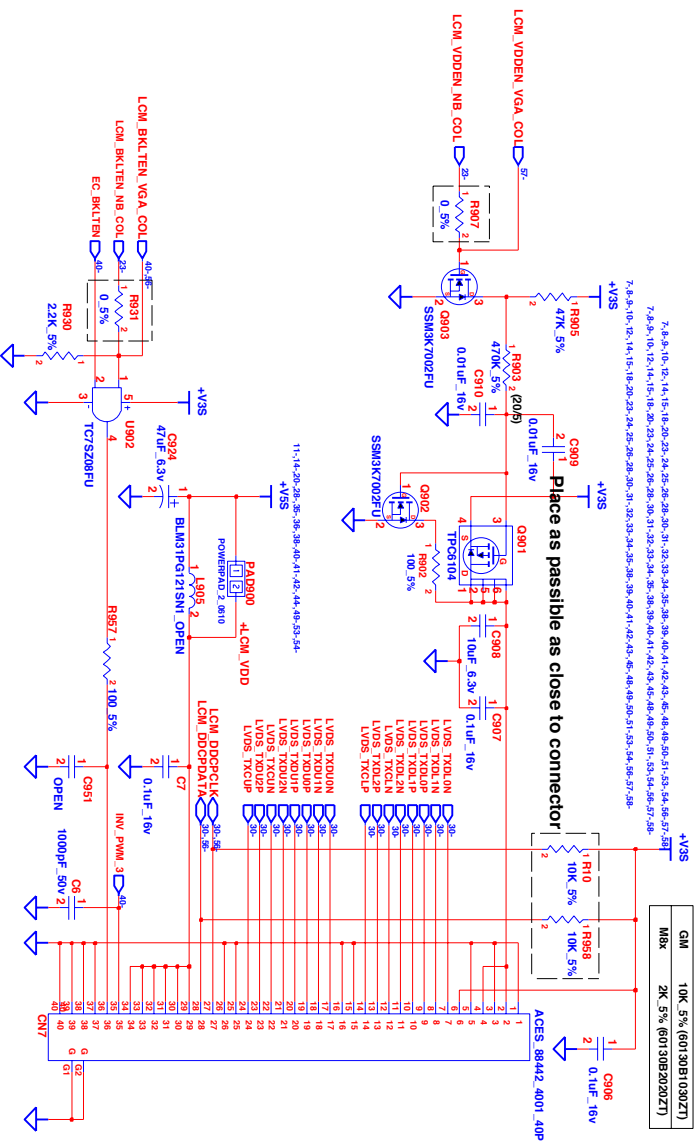
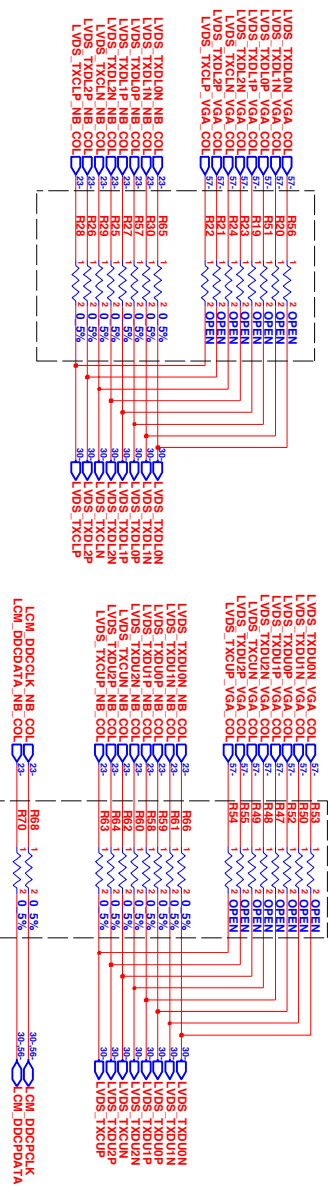


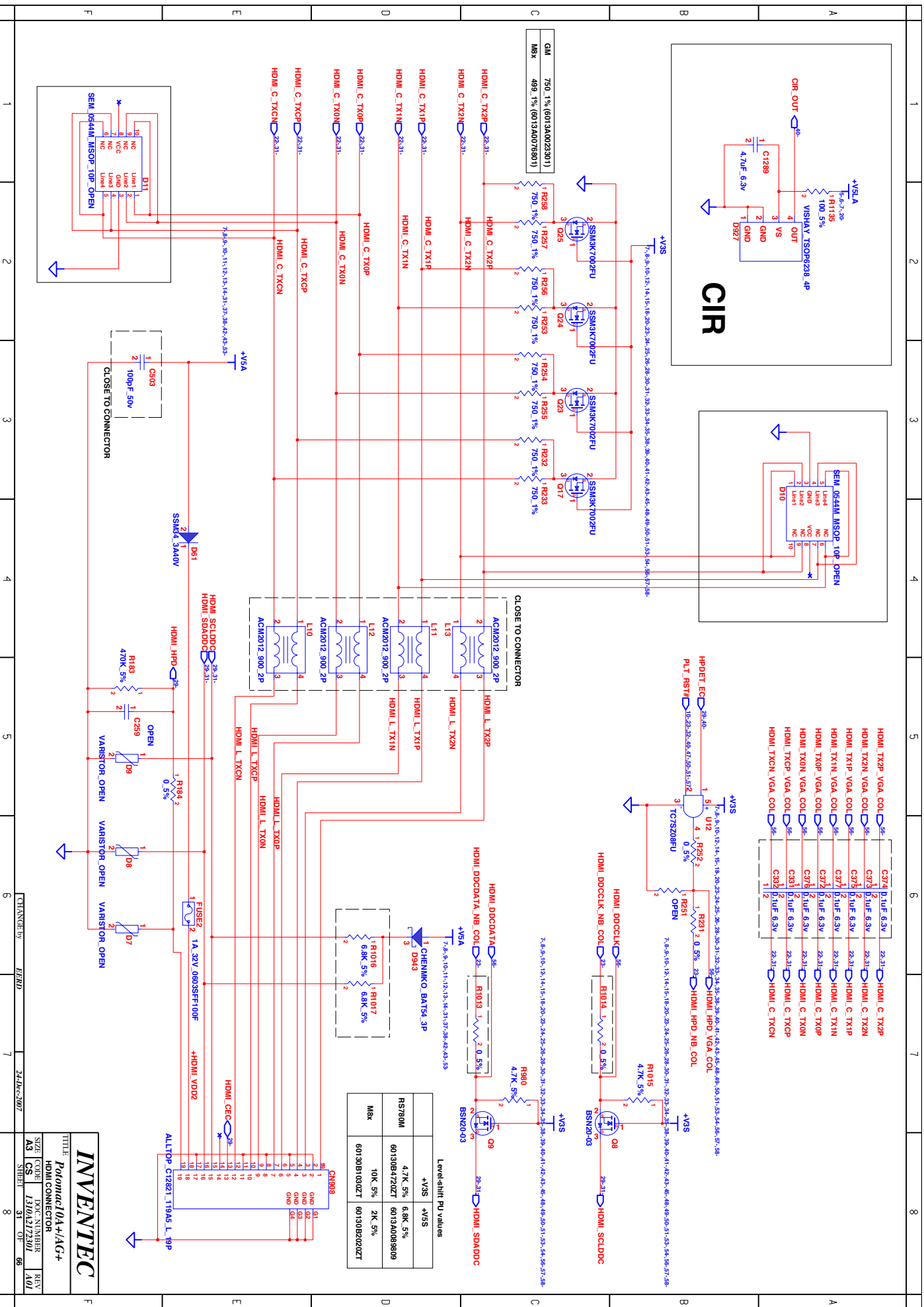
Diagram illustrating the placement of capacitors (CAPs) close to DIMM modules, showing two rows of components (A and B) connected to a common power plane (To CPU power sense).

Row A Components:

- Capacitors: C108, C111, C246, C118, C105, C242, C107, C109, C106, C241, C240, C110, C101, C102, C234, C115, C114, C117, C119, C235, C236, C118.
- Resistors: R108, R111, R112, R113, R114, R115, R116, R117, R118, R119, R120, R121, R122, R123, R124, R125, R126, R127, R128, R129, R130, R131, R132, R133, R134, R135, R136, R137, R138, R139, R140, R141, R142, R143, R144, R145, R146, R147, R148, R149, R150, R151, R152, R153, R154, R155, R156, R157, R158, R159, R160, R161, R162, R163, R164, R165, R166, R167, R168, R169, R170, R171, R172, R173, R174, R175, R176, R177, R178, R179, R180, R181, R182, R183, R184, R185, R186, R187, R188, R189, R190, R191, R192, R193, R194, R195, R196, R197, R198, R199, R200, R201, R202, R203, R204, R205, R206, R207, R208, R209, R210, R211, R212, R213, R214, R215, R216, R217, R218, R219, R220, R221, R222, R223, R224, R225, R226, R227, R228, R229, R230, R231, R232, R233, R234, R235, R236, R237, R238, R239, R240, R241, R242, R243, R244, R245, R246, R247, R248, R249, R250, R251, R252, R253, R254, R255, R256, R257, R258, R259, R260, R261, R262, R263, R264, R265, R266, R267, R268, R269, R270, R271, R272, R273, R274, R275, R276, R277, R278, R279, R280, R281, R282, R283, R284, R285, R286, R287, R288, R289, R290, R291, R292, R293, R294, R295, R296, R297, R298, R299, R300, R301, R302, R303, R304, R305, R306, R307, R308, R309, R310, R311, R312, R313, R314, R315, R316, R317, R318, R319, R320, R321, R322, R323, R324, R325, R326, R327, R328, R329, R330, R331, R332, R333, R334, R335, R336, R337, R338, R339, R340, R341, R342, R343, R344, R345, R346, R347, R348, R349, R350, R351, R352, R353, R354, R355, R356, R357, R358, R359, R360, R361, R362, R363, R364, R365, R366, R367, R368, R369, R370, R371, R372, R373, R374, R375, R376, R377, R378, R379, R380, R381, R382, R383, R384, R385, R386, R387, R388, R389, R390, R391, R392, R393, R394, R395, R396, R397, R398, R399, R400, R401, R402, R403, R404, R405, R406, R407, R408, R409, R410, R411, R412, R413, R414, R415, R416, R417, R418, R419, R420, R421, R422, R423, R424, R425, R426, R427, R428, R429, R430, R431, R432, R433, R434, R435, R436, R437, R438, R439, R440, R441, R442, R443, R444, R445, R446, R447, R448, R449, R450, R451, R452, R453, R454, R455, R456, R457, R458, R459, R460, R461, R462, R463, R464, R465, R466, R467, R468, R469, R470, R471, R472, R473, R474, R475, R476, R477, R478, R479, R480, R481, R482, R483, R484, R485, R486, R487, R488, R489, R490, R491, R492, R493, R494, R495, R496, R497, R498, R499, R500, R501, R502, R503, R504, R505, R506, R507, R508, R509, R510, R511, R512, R513, R514, R515, R516, R517, R518, R519, R520, R521, R522, R523, R524, R525, R526, R527, R528, R529, R530, R531, R532, R533, R534, R535, R536, R537, R538, R539, R540, R541, R542, R543, R544, R545, R546, R547, R548, R549, R550, R551, R552, R553, R554, R555, R556, R557, R558, R559, R560, R561, R562, R563, R564, R565, R566, R567, R568, R569, R570, R571, R572, R573, R574, R575, R576, R577, R578, R579, R580, R581, R582, R583, R584, R585, R586, R587, R588, R589, R590, R591, R592, R593, R594, R595, R596, R597, R598, R599, R600, R601, R602, R603, R604, R605, R606, R607, R608, R609, R610, R611, R612, R613, R614, R615, R616, R617, R618, R619, R620, R621, R622, R623, R624, R625, R626, R627, R628, R629, R630, R631, R632, R633, R634, R635, R636, R637, R638, R639, R640, R641, R642, R643, R644, R645, R646, R647, R648, R649, R650, R651, R652, R653, R654, R655, R656, R657, R658, R659, R660, R661, R662, R663, R664, R665, R666, R667, R668, R669, R670, R671, R672, R673, R674, R675, R676, R677, R678, R679, R680, R681, R682, R683, R684, R685, R686, R687, R688, R689, R690, R691, R692, R693, R694, R695, R696, R697, R698, R699, R700, R701, R702, R703, R704, R705, R706, R707, R708, R709, R710, R711, R712, R713, R714, R715, R716, R717, R718, R719, R720, R721, R722, R723, R724, R725, R726, R727, R728, R729, R730, R731, R732, R733, R734, R735, R736, R737, R738, R739, R740, R741, R742, R743, R744, R745, R746, R747, R748, R749, R750, R751, R752, R753, R754, R755, R756, R757, R758, R759, R760, R761, R762, R763, R764, R765, R766, R767, R768, R769, R770, R771, R772, R773, R774, R775, R776, R777, R778, R779, R780, R781, R782, R783, R784, R785, R786, R787, R788, R789, R790, R791, R792, R793, R794, R795, R796, R797, R798, R799, R800, R801, R802, R803, R804, R805, R806, R807, R808, R809, R810, R811, R812, R813, R814, R815, R816, R817, R818, R819, R820, R821, R822, R823, R824, R825, R826, R827, R828, R829, R830, R831, R832, R833, R834, R835, R836, R837, R838, R839, R840, R841, R842, R843, R844, R845, R846, R847, R848, R849, R850, R851, R852, R853, R854, R855, R856, R857, R858, R859, R860, R861, R862, R863, R864, R865, R866, R867, R868, R869, R870, R871, R872, R873, R874, R875, R876, R877, R878, R879, R880, R881, R882, R883, R884, R885, R886, R887, R





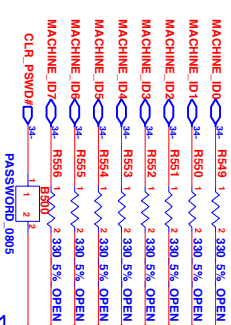


INVENTEC

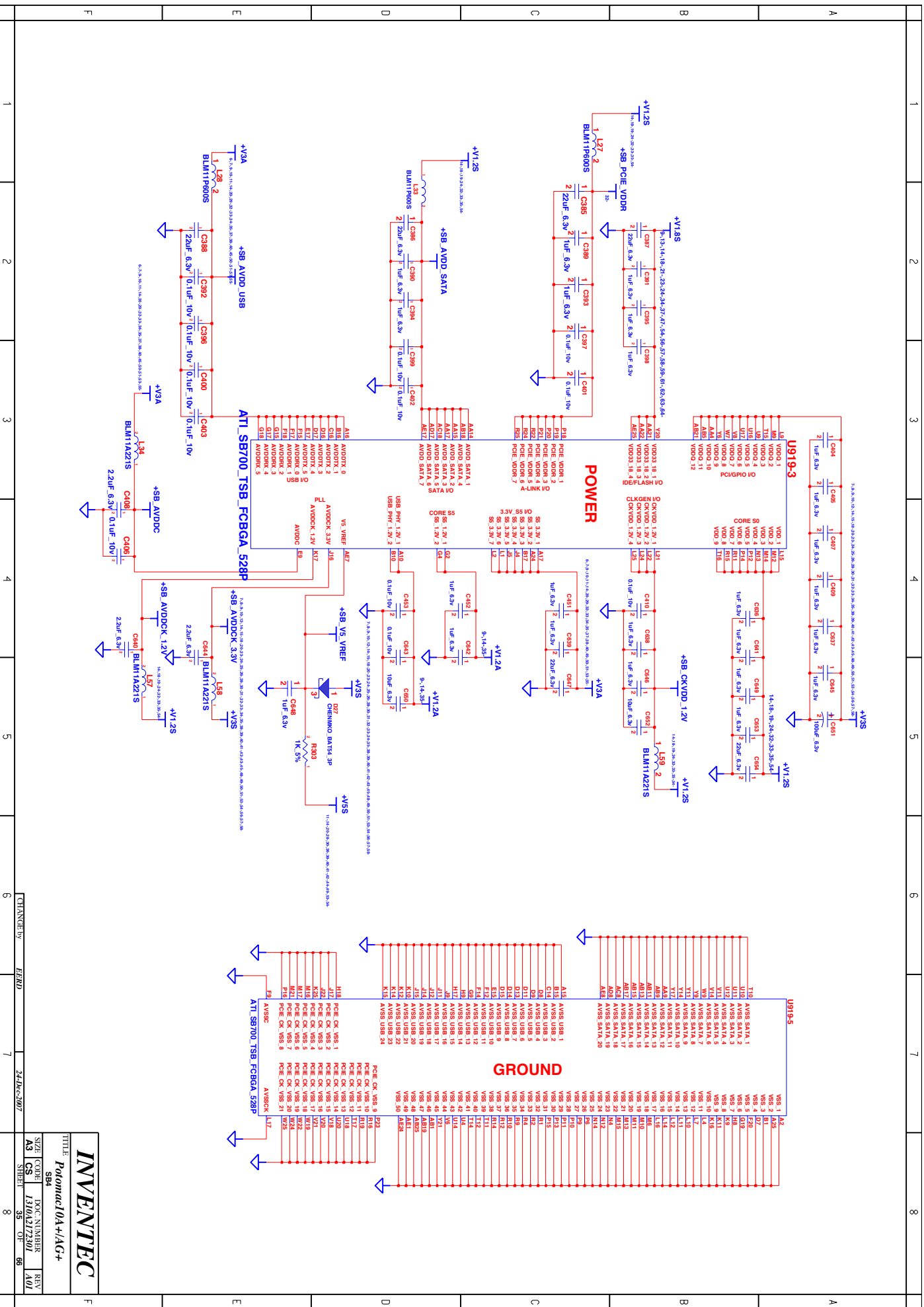
Patomac 10A+/AG+

SIZE CODE: 1310A2172301
HDMI CONNECTOR
REV: 4.01

CHANGED BY: E420
24.10.2007



CHANGE by	<i>EERD</i>	<i>24-Dec-200</i>
-----------	-------------	-------------------



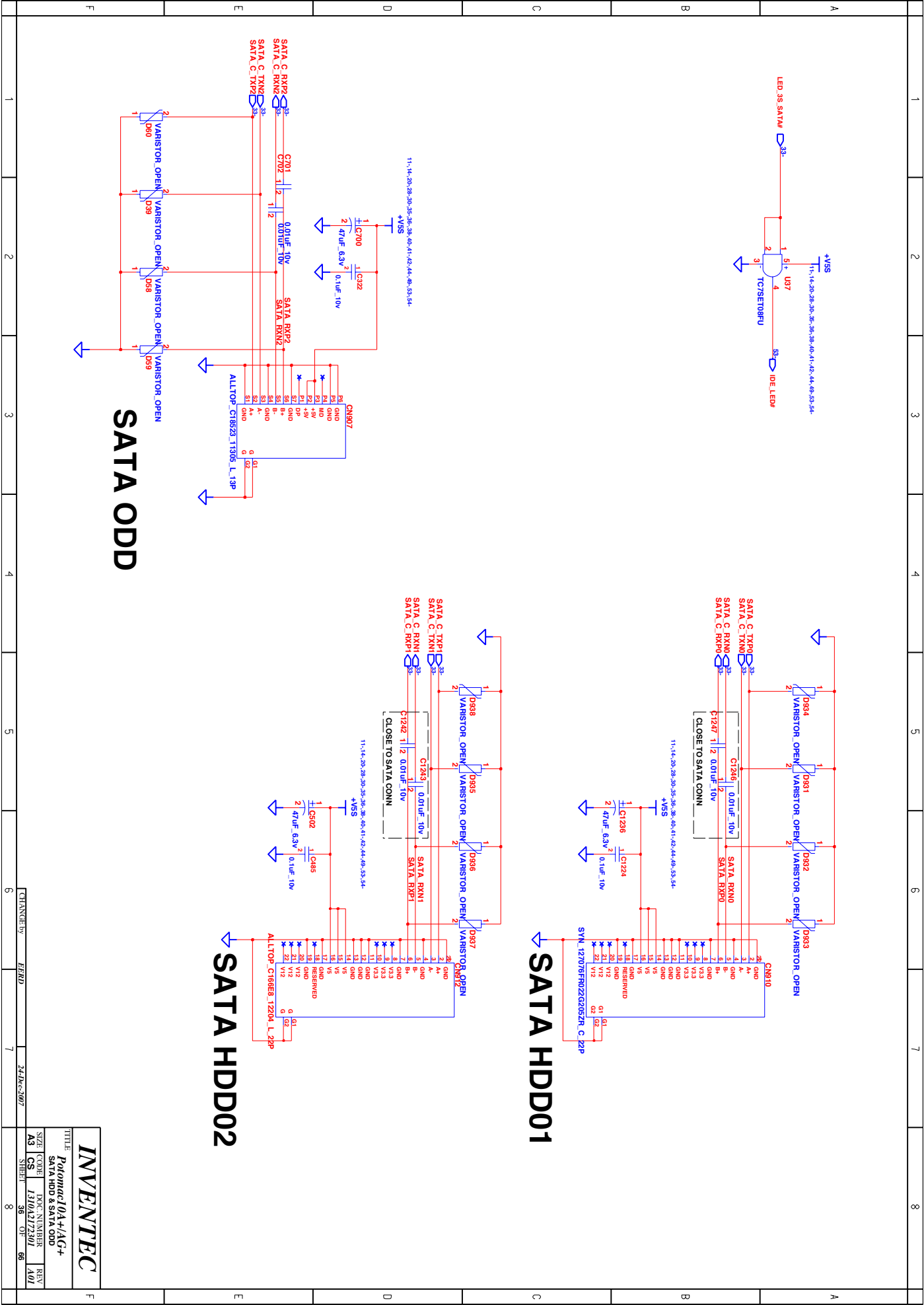
INVENTEC
Potomac10A+/AG+

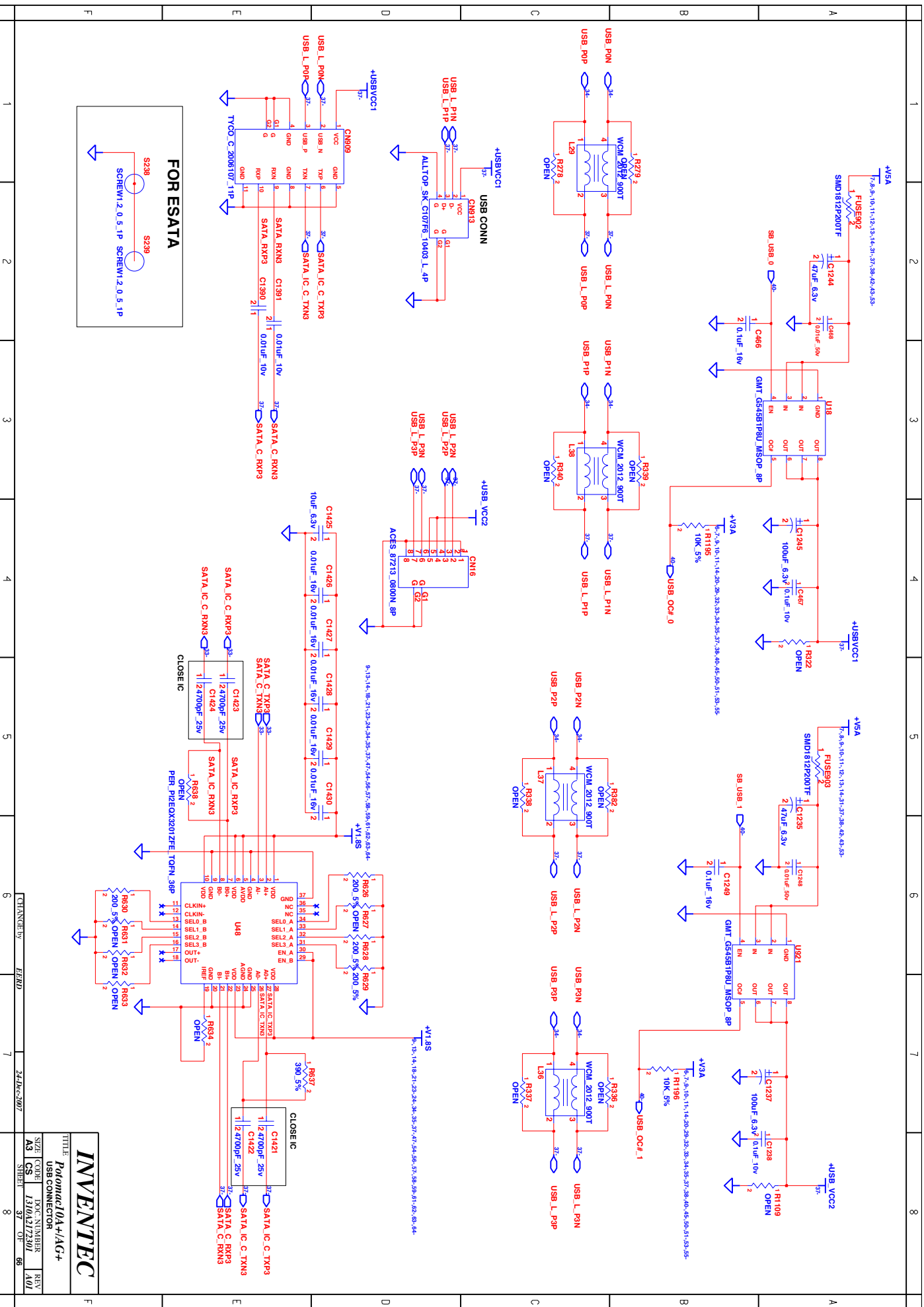
SIZE CODE
A3 CS 1310A2172501
SHEET 35 OF 66

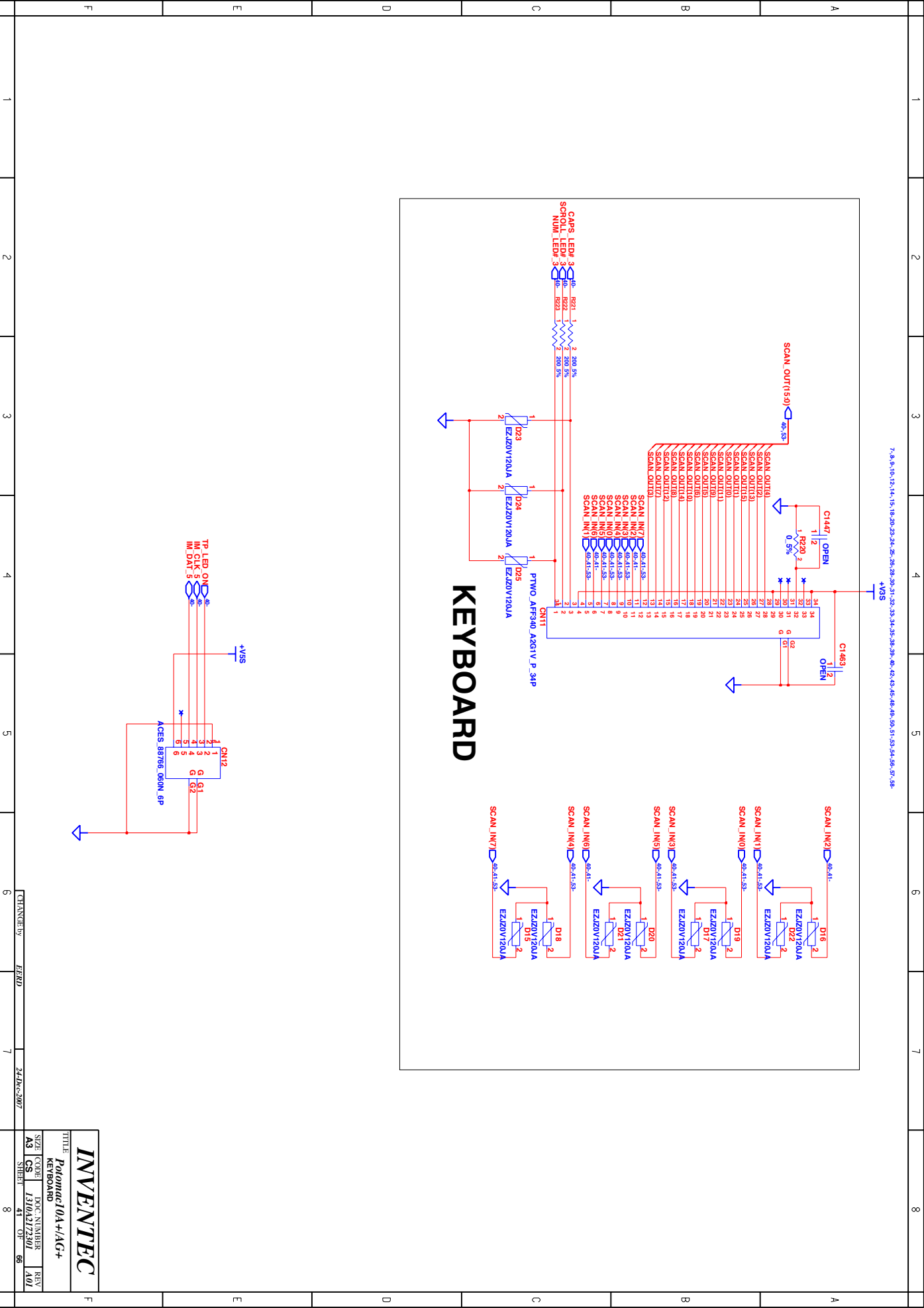
CHANGED BY HEAD

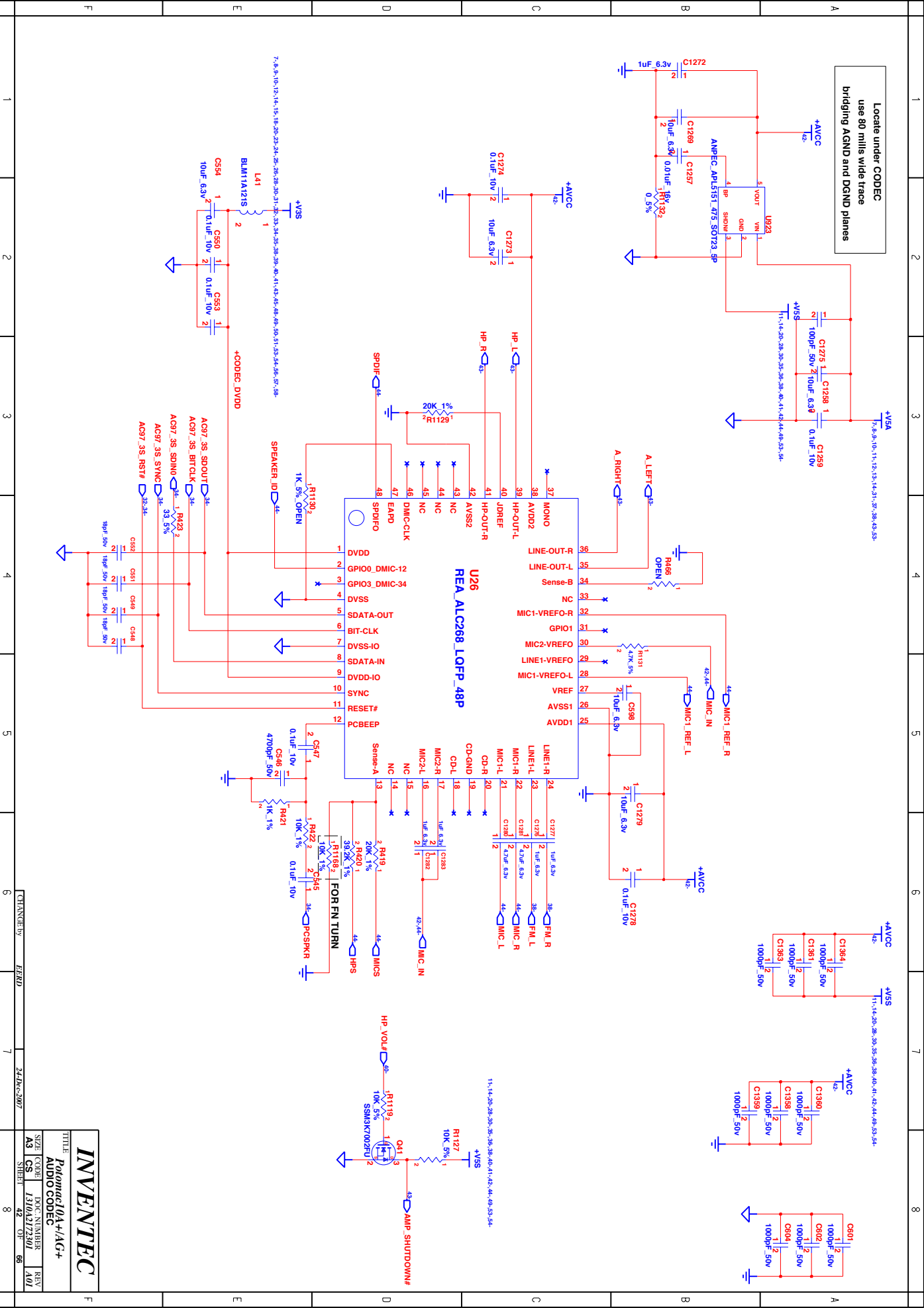
24.10.2007

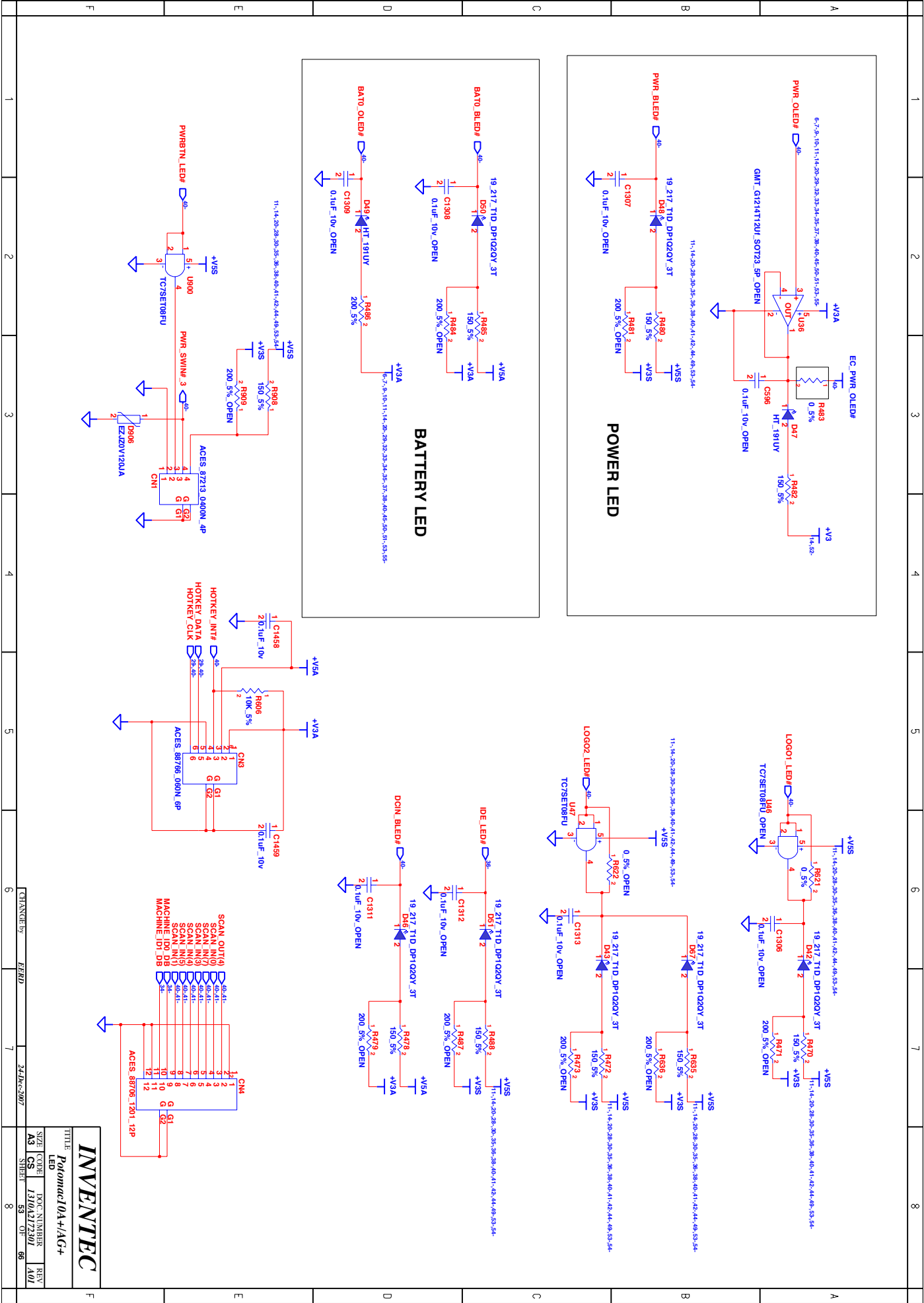
8

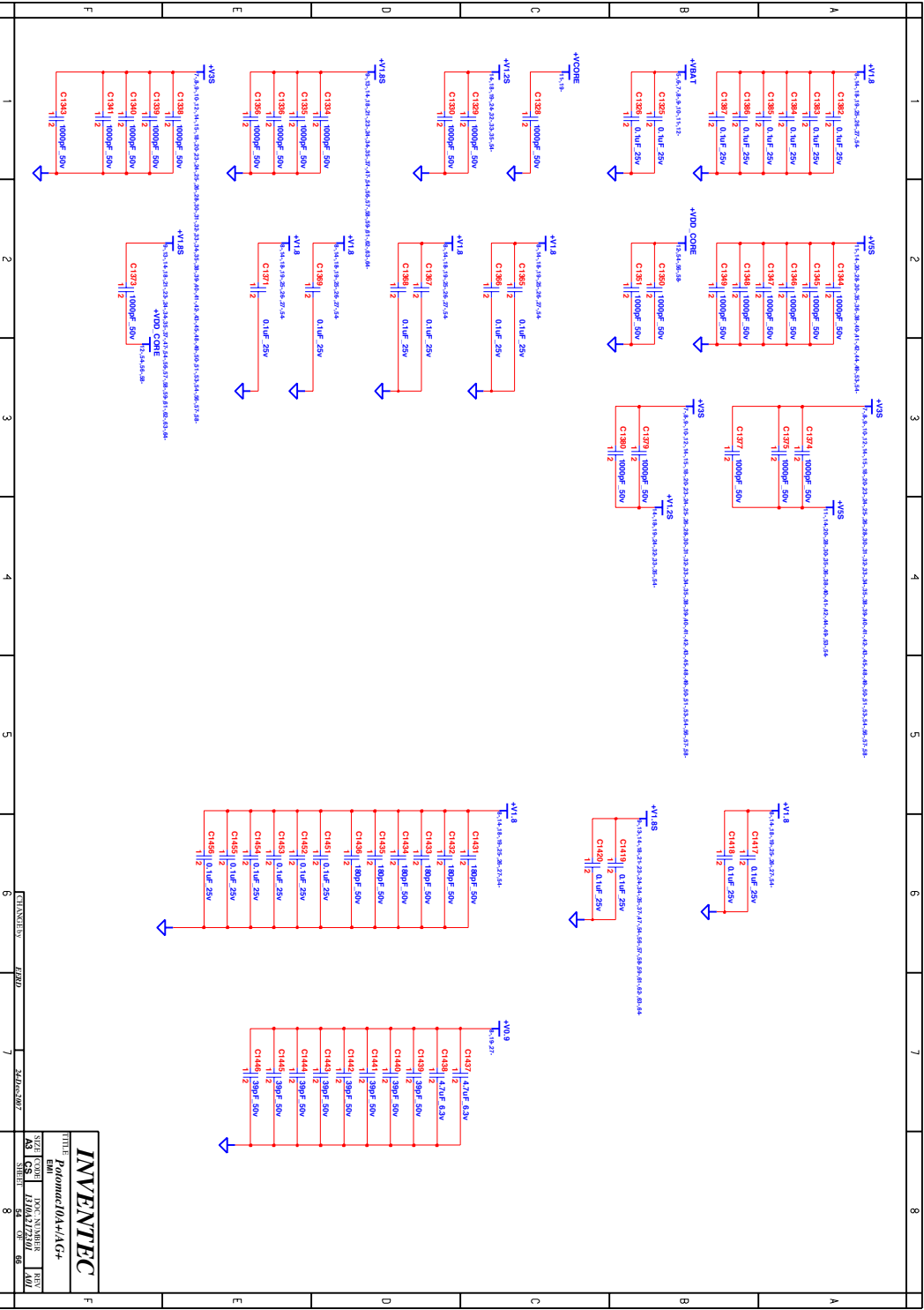


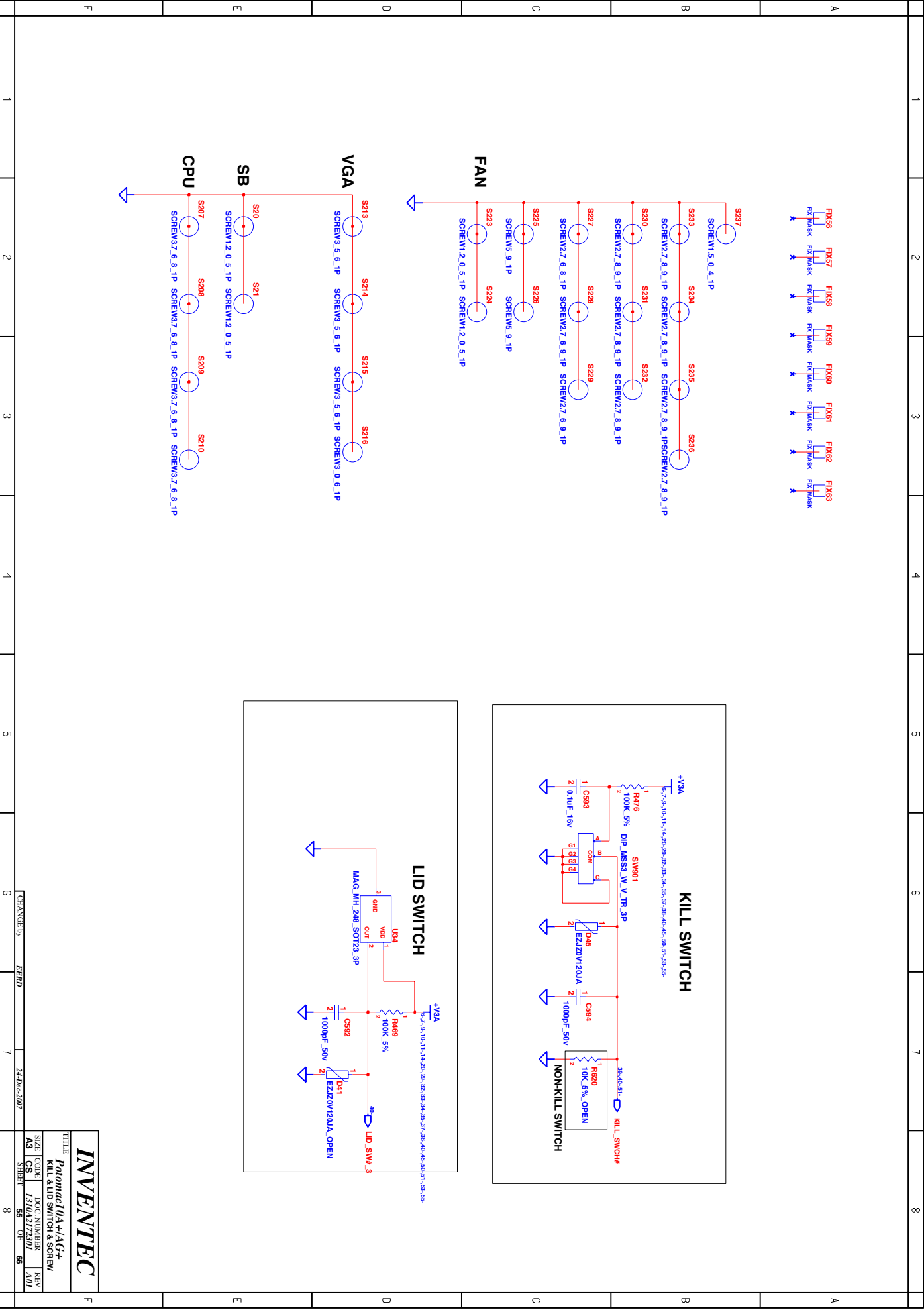


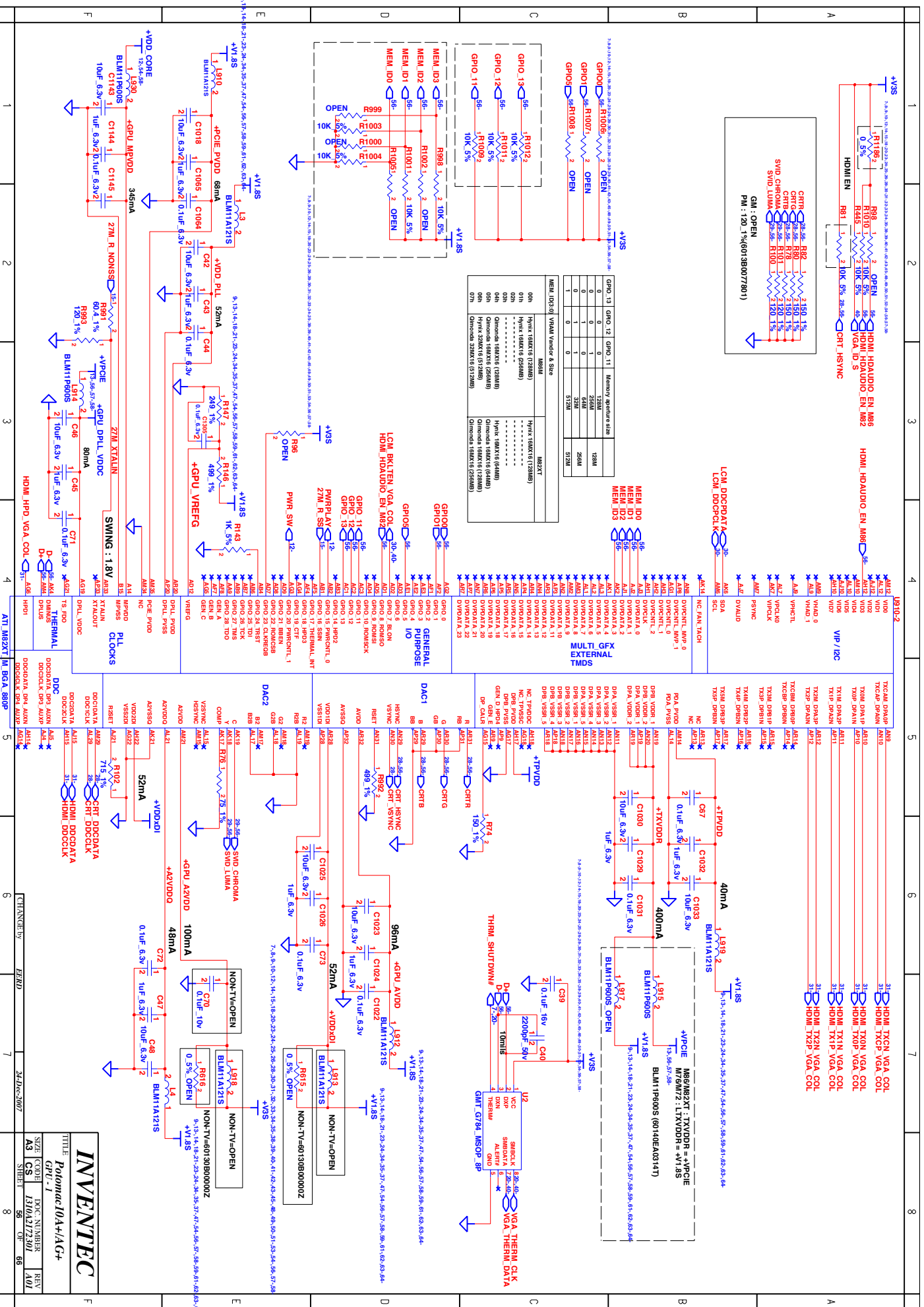












INVENTEC

Potomac IDA+/A/G+

Doc Number

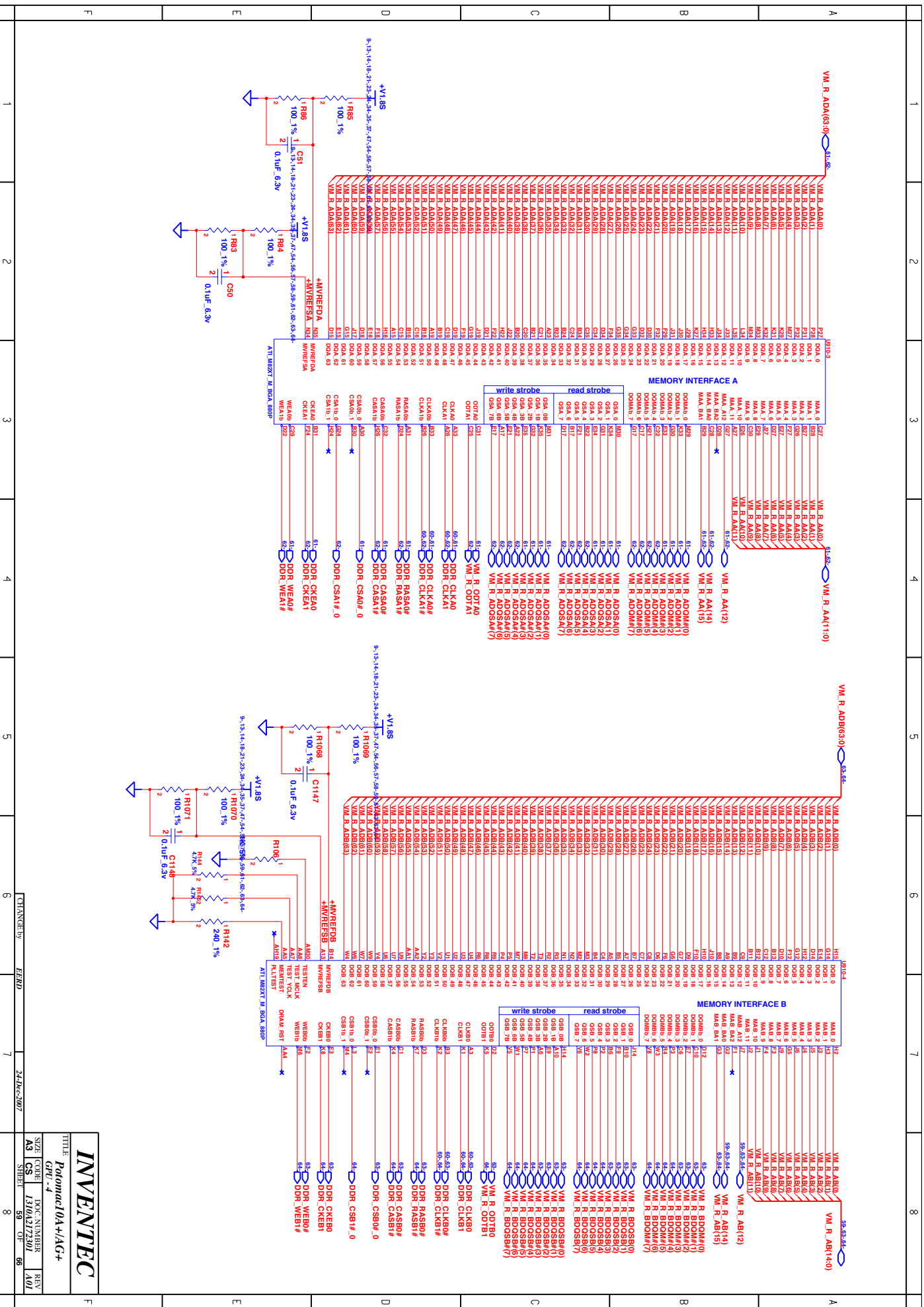
Rev

Size

CS

Sheet

66



INVENTEC

Potomac 10A+/AG+

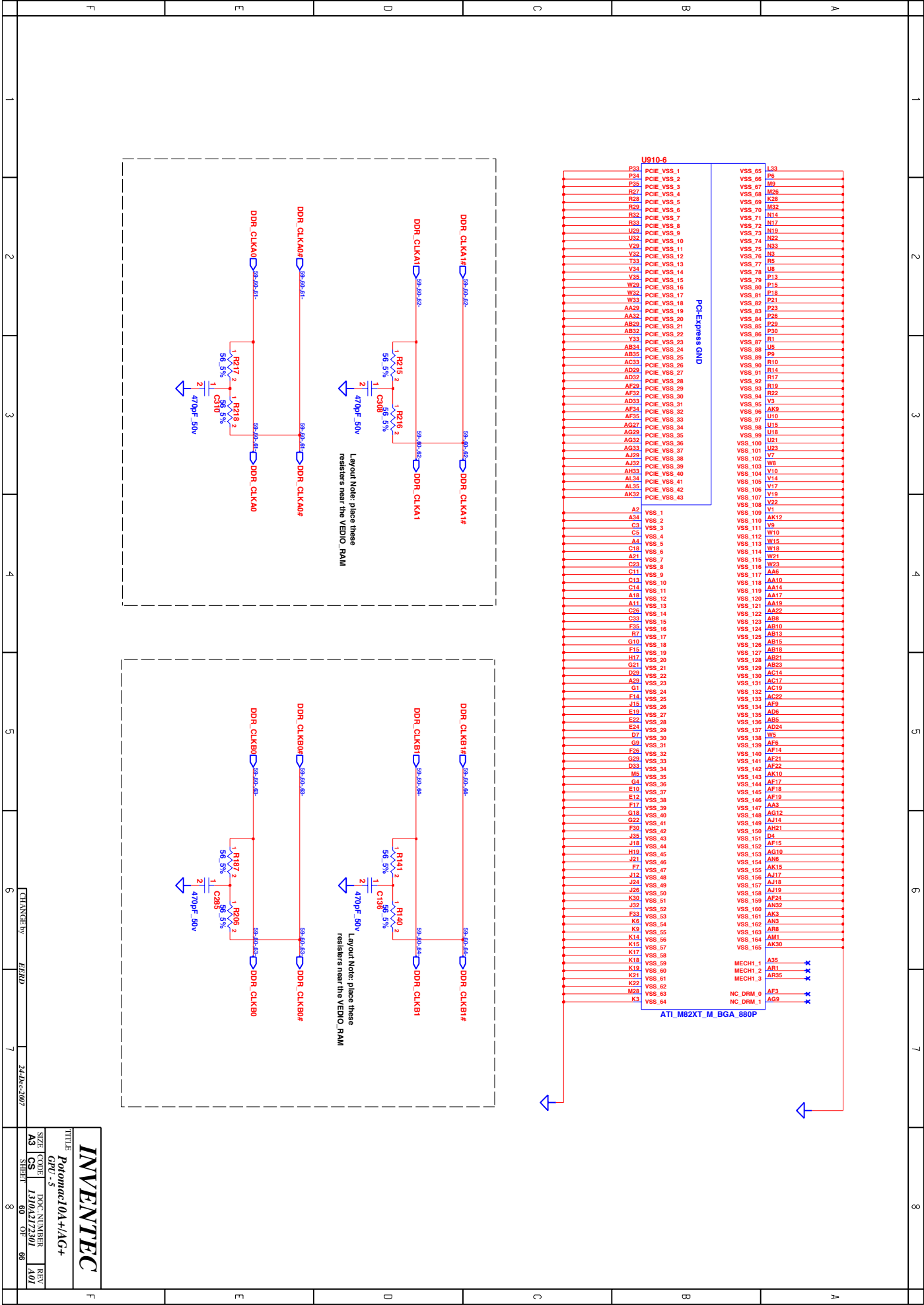
GPU - 4

SIZE CODE 1310A172301

AS CS 89 07

REV 4.0

DOC NUMBER 89



www.vinafix.vn

64
2104

INVENTEC			
TITLE			
Potomac10A+/-AG+			
<i>Small Board</i>			
SIZE	CODE	DOC. NUMBER	REV
A3	CS	I310A2172301	A01
SHEET		65	OF 66

